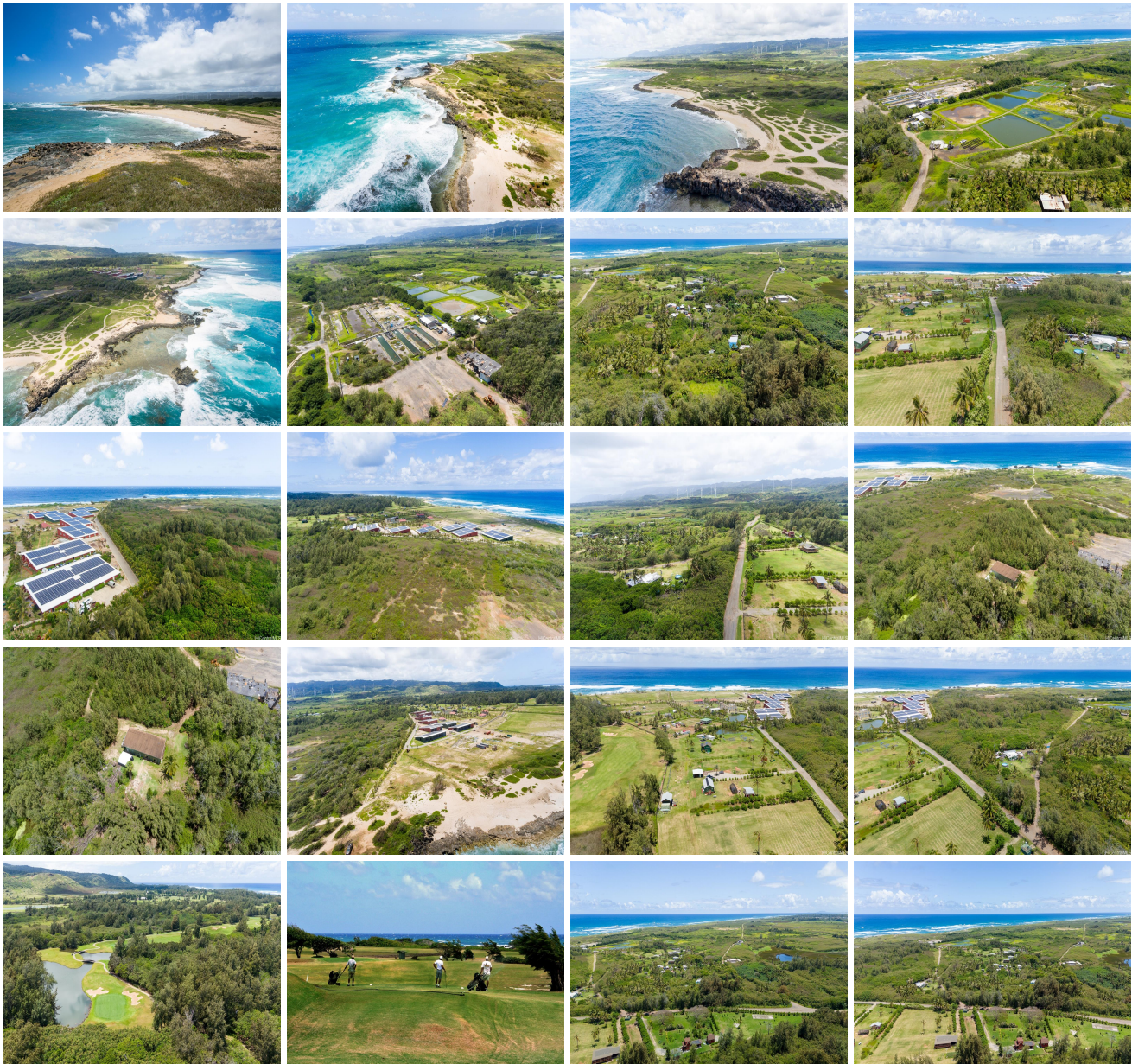


56-1081 Kamehameha Highway, Kahuku 96731 * * \$28,800,000

Beds: 8	MLS#: 202405958, FS	Year Built: 1950
Bath: 4/0	Status: Active	Remodeled:
Living Sq. Ft.: 5,000	List Date & DOM: 03-13-2024 & 66	Total Parking: 9
Land Sq. Ft.: 7,421,229	Condition: Average, Fair	Assessed Value
Lanai Sq. Ft.: 0	Ocean, Sandy	Building: \$155,200
Sq. Ft. Other: 0	Frontage: Beach, Waterfront	Land: \$1,813,900
Total Sq. Ft. 5,000	Tax/Year: \$1,435/2023	Total: \$1,969,100
Maint./Assoc. \$0 / \$0	Neighborhood: Kahuku	Stories / CPR: One / No
Parking: 3 Car+	Flood Zone : Zone AE - Tool	Frontage: Ocean, Sandy Beach, Waterfront
Zoning : 52 - AG-2 General Agricultural	View: Coastline, Mountain, Ocean, Sunrise, Sunset	

Public Remarks: Your own private paradise on Oahu's North Shore! A rare opportunity to own over 170 acres of land fronting approximately 1/2 mile of stunning oceanfront. This is one of the largest tracks of oceanfront available in Hawaii. It is located next to Turtle Bay Resort and two Championship Golf Courses, offering you privacy, seclusion, and a pristine location. You can create your own private beachfront horse ranch, farm, aqua culture or whatever you can dream of under AG2 Zoning in paradise. The sale includes 11 parcels (011, 019, 020, 021, 022, 024, 026, 030, 031, 046, and 049), three homes, and several other structures on the property. Access to the property is from Kamehameha Hwy. This Oceanfront property is the last of its kind in Hawaii and has enormous potential and value and would be an amazing family legacy property. Please click on the drone video tour to see the whole property. **Sale Conditions:** None **Schools:** [Kahuku](#), [Kahuku](#), [Kahuku](#) * [Request Showing](#), [Photos](#), [History](#), [Maps](#), [Deed](#), [Watch List](#), [Tax Info](#)





Address	Price	Bd & Bth	Living / Avg.	Land Avg.	Lanai	Occ.	FL	DOM
56-1081 Kamehameha Highway	\$28,800,000	8 & 4/0	5,000 \$5,760	7,421,229 \$4	0	0%	0	66

Address	Tax Maint. Ass.	Assessed Land	Assessed Building	Assessed Total	Ratio	Year & Remodeled
56-1081 Kamehameha Highway	\$1,435 \$0 \$0	\$1,813,900	\$155,200	\$1,969,100	1,463%	1950 & NA

[56-1081 Kamehameha Highway](#) - MLS#: [202405958](#) - Your own private paradise on Oahu's North Shore! A rare opportunity to own over 170 acres of land fronting approximately 1/2 mile of stunning oceanfront. This is one of the largest tracks of oceanfront available in Hawaii. It is located next to Turtle Bay Resort and two Championship Golf Courses, offering you privacy, seclusion, and a pristine location. You can create your own private beachfront horse ranch, farm, aqua culture or whatever you can dream of under AG2 Zoning in paradise. The sale includes 11 parcels (011, 019, 020, 021, 022, 024, 026, 030, 031, 046, and 049), three homes, and several other structures on the property. Access to the property is from Kamehameha Hwy. This Oceanfront property is the last of its kind in Hawaii and has enormous potential and value and would be an amazing family legacy property. Please click on the drone video tour to see the whole property. **Region:** North Shore **Neighborhood:** Kahuku **Condition:** Average, Fair **Parking:** 3 Car+ **Total Parking:** 9 **View:** Coastline, Mountain, Ocean, Sunrise, Sunset **Frontage:** Ocean, Sandy Beach, Waterfront **Pool:** None **Zoning:** 52 - AG-2 General Agricultural **Sale Conditions:** None **Schools:** [Kahuku](#), [Kahuku](#), [Kahuku](#) * [Request Showing](#), [Photos](#), [History](#), [Maps](#), [Deed](#), [Watch List](#), [Tax Info](#)

DOM = Days on Market, Occ. = Occupancy, FL = Floor Number