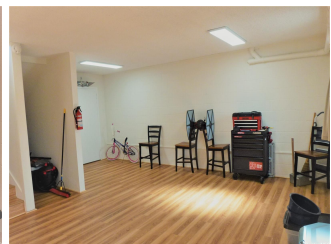
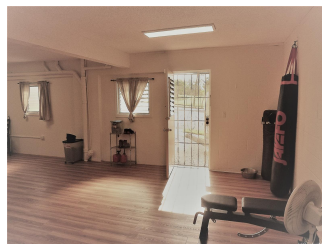
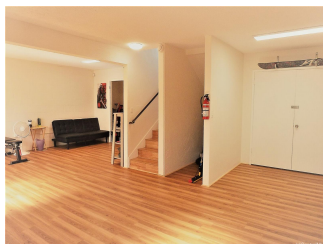
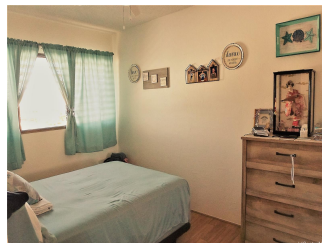
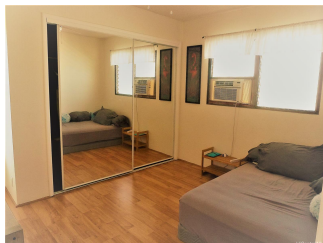
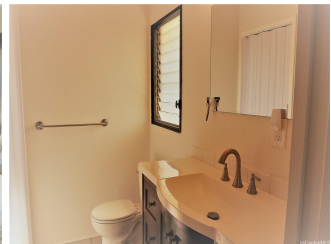
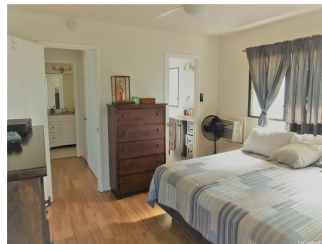
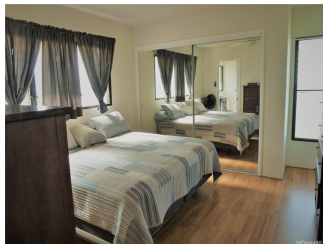
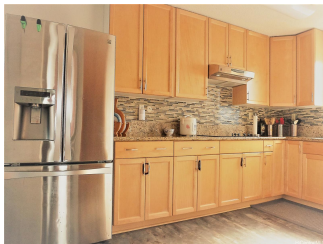
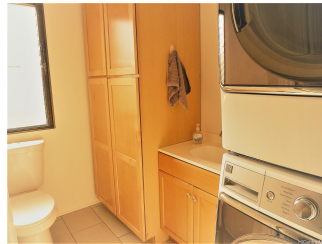
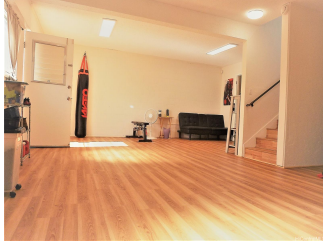


Tropicana Village-Aiea, Aiea 96701 * Tropicana Village-Aiea * \$698,888 * Originally \$708,000

Beds: 3	MLS#: <u>202405976</u>, FS	Year Built: 1971
Bath: 2/1	Status: Active	Remodeled:
Living Sq. Ft.: 1,361	List Date & DOM: 03-15-2024 & 54	Total Parking: 2
Land Sq. Ft.: 104,413	Condition: Above Average, Average	Assessed Value
Lanai Sq. Ft.: 63	Frontage: Other	Building: \$501,000
Sq. Ft. Other: 0	Tax/Year: \$197/2024	Land: \$297,600
Total Sq. Ft. 1,424	Neighborhood: Pearlridge	Total: \$798,600
Maint./Assoc. \$900 / \$0	Flood Zone : Zone X - Tool	Stories / CPR: Three / No
Parking: Assigned, Open - 2, Other, Street	Frontage: Other	
Zoning : 11 - A-1 Low Density Apartment	View: Coastline, Golf Course, Mountain, Sunset	

Public Remarks: Superior Location, Rarely available Corner-End unit with no neighbors in front or back! Unit is positioned to take advantage of the trade winds with great cross breezes. This spacious 3 bedroom 2.5 bath townhome will amaze you with the space it offers, also including an extended 700 sf flexible living space with exterior access. Enjoy a spacious kitchen with a microwave-convection oven along with loads of cabinets and counter space. Enjoy the great ocean views from the living room, patio area and from the 3rd floor bedrooms. This 2,061 square feet townhome has more space than an average single family home. Come and see this home today with room for all. 1st Open House, Sunday, March 17, 1:00-5:00pm. **Sale Conditions:** None, Subject To Repl. Property **Schools:** [Pearl Ridge](#), [Aiea](#), [Aiea](#) * [Request Showing](#), [Photos](#), [History](#), [Maps](#), [Deed](#), [Watch List](#), [Tax Info](#)





Address	Price	Bd & Bth	Living / Avg.	Land Avg.	Lanai	Occ.	FL	DOM
	\$698,888	3 & 2/1	1,361 \$514	104,413 \$7	63	78%	1	54

Address	Tax Maint. Ass.	Assessed Land	Assessed Building	Assessed Total	Ratio	Year & Remodeled
	\$197 \$900 \$0	\$297,600	\$501,000	\$798,600	88%	1971 & NA

- MLS#: [202405976](#) - Original price was \$708,000 - Superior Location, Rarely available Corner-End unit with no neighbors in front or back! Unit is positioned to take advantage of the trade winds with great cross breezes. This spacious 3 bedroom 2.5 bath townhome will amaze you with the space it offers, also including an extended 700 sf flexible living space with exterior access. Enjoy a spacious kitchen with a microwave-convection oven along with loads of cabinets and counter space. Enjoy the great ocean views from the living room, patio area and from the 3rd floor bedrooms. This 2,061 square feet townhome has more space than an average single family home. Come and see this home today with room for all. 1st Open House, Sunday, March 17, 1:00-5:00pm. **Region:** Pearl City **Neighborhood:** Pearlridge **Condition:** Above Average, Average **Parking:** Assigned, Open - 2, Other, Street **Total Parking:** 2 **View:** Coastline, Golf Course, Mountain, Sunset **Frontage:** Other **Pool:** **Zoning:** 11 - A-1 Low Density Apartment **Sale Conditions:** None, Subject To Repl. Property **Schools:** [Pearl Ridge](#), [Aiea](#), [Aiea](#) * [Request Showing](#), [Photos](#), [History](#), [Maps](#), [Deed](#), [Watch List](#), [Tax Info](#)

DOM = Days on Market, Occ. = Occupancy, FL = Floor Number