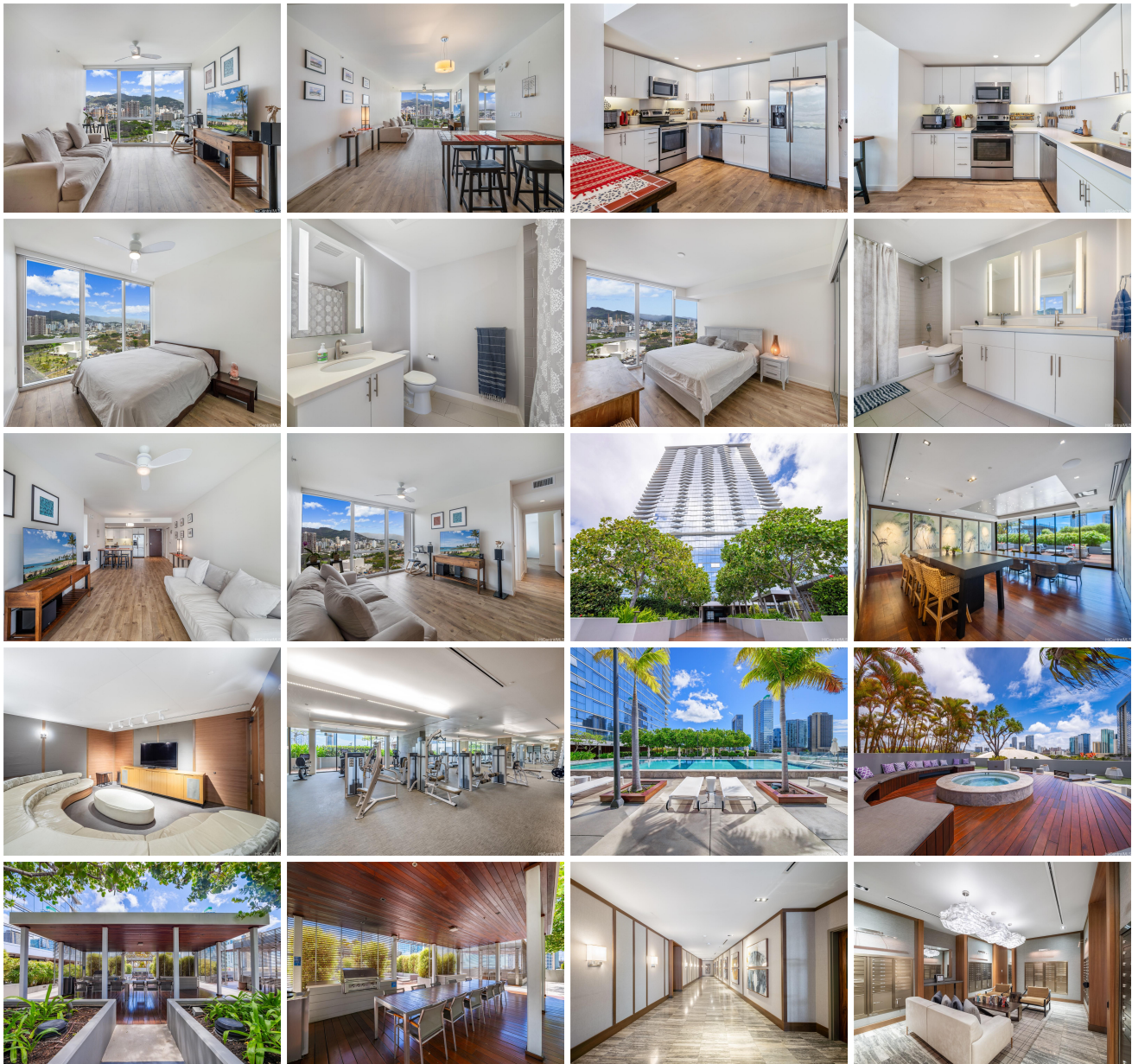


**Symphony Honolulu 888 Kapiolani Boulevard Unit 2602, Honolulu 96813 * Symphony
Honolulu * \$978,000 * Originally \$985,000**

Beds: 2	MLS#: 202405981, FS	Year Built: 2016
Bath: 2/0	Status: Active	Remodeled:
Living Sq. Ft.: 922	List Date & DOM: 04-18-2024 & 29	Total Parking: 1
Land Sq. Ft.: 0	Condition: Excellent	Assessed Value
Lanai Sq. Ft.: 0	Frontage:	Building: \$873,800
Sq. Ft. Other: 0	Tax/Year: \$932,200/2023	Land: \$58,400
Total Sq. Ft. 922	Neighborhood: Kakaako	Total: \$932,200
Maint./Assoc. \$793 / \$0	Flood Zone : Zone X - Tool	Stories / CPR: 21+ / No
Parking: Assigned, Covered - 1, Guest	Frontage:	
Zoning : Kak - Kakaako Community Development Project	View: City, Mountain	

Public Remarks: Modern and urban living in the luxurious Symphony Honolulu! This 2-bedroom|2-bathroom|1 parking stall unit features, floor-to-ceiling windows, open floor plan, and gorgeous views of the city/mountains. Spectacular amenities and building features include: 24hr security, infinity pool, jacuzzi, BBQ cabanas, gym/fitness center, movie room, massage room, social/dining room with full kitchen, guest suites, and dog park. Yes, the building is PET FRIENDLY (verified). Sustainability takes precedence as the condo utilizes PV panels and EV-charging stations. Literally steps from the lobby leads you to MW Restaurant, Artizen, and Amaterasu Sushi! With Neal Blaisdell Arena/Center next door, you can enjoy the Farmer's Market, shows/musicals, and events. Make this your home and embrace a stylish lifestyle in the heart of Honolulu. **Sale Conditions:** None **Schools:** [Royal](#), [Keelikolani](#), [Mckinley](#) * [Request Showing](#), [Photos](#), [History](#), [Maps](#), [Deed](#), [Watch List](#), [Tax Info](#)





Address	Price	Bd & Bth	Living / Avg.	Land Avg.	Lanai	Occ.	FL	DOM
888 Kapiolani Boulevard 2602	\$978,000	2 & 2/0	922 \$1,061	0 \$inf	0	61%	26	29

Address	Tax Maint. Ass.	Assessed Land	Assessed Building	Assessed Total	Ratio	Year & Remodeled
888 Kapiolani Boulevard 2602	\$932,200 \$793 \$0	\$58,400	\$873,800	\$932,200	105%	2016 & NA

[888 Kapiolani Boulevard 2602](#) - MLS#: [202405981](#) - Original price was \$985,000 - Modern and urban living in the luxurious Symphony Honolulu! This 2-bedroom|2-bathroom|1 parking stall unit features, floor-to-ceiling windows, open floor plan, and gorgeous views of the city/mountains. Spectacular amenities and building features include: 24hr security, infinity pool, jacuzzi, BBQ cabanas, gym/fitness center, movie room, massage room, social/dining room with full kitchen, guest suites, and dog park. Yes, the building is PET FRIENDLY (verified). Sustainability takes precedence as the condo utilizes PV panels and EV-charging stations. Literally steps from the lobby leads you to MW Restaurant, Artizen, and Amaterasu Sushi! With Neal Blaisdell Arena/Center next door, you can enjoy the Farmer's Market, shows/musicals, and events. Make this your home and embrace a stylish lifestyle in the heart of Honolulu. **Region:** Metro **Neighborhood:** Kakaako **Condition:** Excellent **Parking:** Assigned, Covered - 1, Guest **Total Parking:** 1 **View:** City, Mountain **Frontage:** **Pool:** **Zoning:** Kak - Kakaako Community Development Project **Sale Conditions:** None **Schools:** [Royal](#), [Keelikolani](#), [Mckinley](#) * [Request Showing](#), [Photos](#), [History](#), [Maps](#), [Deed](#), [Watch List](#), [Tax Info](#)

DOM = Days on Market, Occ. = Occupancy, FL = Floor Number