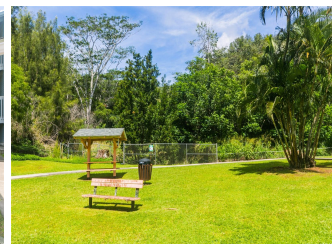
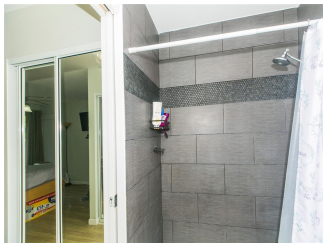
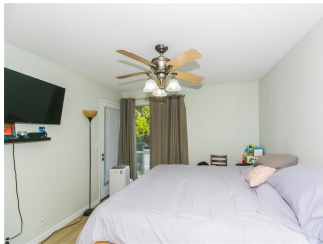


Gardens At Launani Vly 1 95-536 Wikao Street Unit D102, Mililani 96789 * Gardens At

Launani Vly 1 * \$500,000

Beds: 2	MLS#: 202406025, FS	Year Built: 1993
Bath: 2/0	Status: Active	Remodeled: 2024
Living Sq. Ft.: 833	List Date & DOM: 03-11-2024 & 58	Total Parking: 2
Land Sq. Ft.: 172,498	Condition: Above Average	Assessed Value
Lanai Sq. Ft.: 58	Frontage:	Building: \$315,500
Sq. Ft. Other: 0	Tax/Year: \$158/2023	Land: \$226,300
Total Sq. Ft. 891	Neighborhood: Launani Valley	Total: \$541,800
Maint./Assoc. \$519 / \$80	Flood Zone : Zone D - Tool	Stories / CPR: One / No
Parking: Covered - 1, Guest, Open - 1	Frontage:	
Zoning : 05 - R-5 Residential District	View: Garden	

Public Remarks: Welcome to this tastefully remodeled 2-bedroom, 2-bathroom, ground floor unit located in the highly sought-after community of Gardens at Launani Valley. This cozy home boasts new flooring and recently updated bathrooms. Includes 2 parking spaces and a covered lanai are just icing on the cake! Let yourself be amazed with tons of on-site amenities this exceptional community has to offer which includes BBQ area, a well-maintained swimming pool, a basketball court, tennis courts, and jungle gyms for entertainment. Conveniently tucked-away, this location provides incredible accessibility to military personnel, given its proximity to Schofield Barracks and Wheeler Air Field. This is indeed an extraordinary place to live, providing the perfect blend of comfort, convenience, and a host of amenities! **Sale Conditions:** None **Schools:** [Wheeler](#), [Wheeler](#), [Leilehua](#) * [Request Showing](#), [Photos](#), [History](#), [Maps](#), [Deed](#), [Watch List](#), [Tax Info](#)





Address	Price	Bd & Bth	Living / Avg.	Land Avg.	Lanai	Occ.	FL	DOM
95-536 Wikao Street D102	\$500,000	2 & 2/0	833 \$600	172,498 \$3	58	61%	1	58

Address	Tax Maint. Ass.	Assessed Land	Assessed Building	Assessed Total	Ratio	Year & Remodeled
95-536 Wikao Street D102	\$158 \$519 \$80	\$226,300	\$315,500	\$541,800	92%	1993 & 2024

[95-536 Wikao Street D102](#) - MLS#: [202406025](#) - Welcome to this tastefully remodeled 2-bedroom, 2-bathroom, ground floor unit located in the highly sought-after community of Gardens at Launani Valley. This cozy home boasts new flooring and recently updated bathrooms. Includes 2 parking spaces and a covered lanai are just icing on the cake! Let yourself be amazed with tons of on-site amenities this exceptional community has to offer which includes BBQ area, a well-maintained swimming pool, a basketball court, tennis courts, and jungle gyms for entertainment. Conveniently tucked-away, this location provides incredible accessibility to military personnel, given its proximity to Schofield Barracks and Wheeler Air Field. This is indeed an extraordinary place to live, providing the perfect blend of comfort, convenience, and a host of amenities! **Region:** Central **Neighborhood:** Launani Valley **Condition:** Above Average **Parking:** Covered - 1, Guest, Open - 1 **Total Parking:** 2 **View:** Garden **Frontage:** Pool: **Zoning:** 05 - R-5 Residential District **Sale Conditions:** None **Schools:** [Wheeler](#), [Wheeler](#), [Leilehua](#) * [Request Showing](#), [Photos](#), [History](#), [Maps](#), [Deed](#), [Watch List](#), [Tax Info](#)

DOM = Days on Market, Occ. = Occupancy, FL = Floor Number