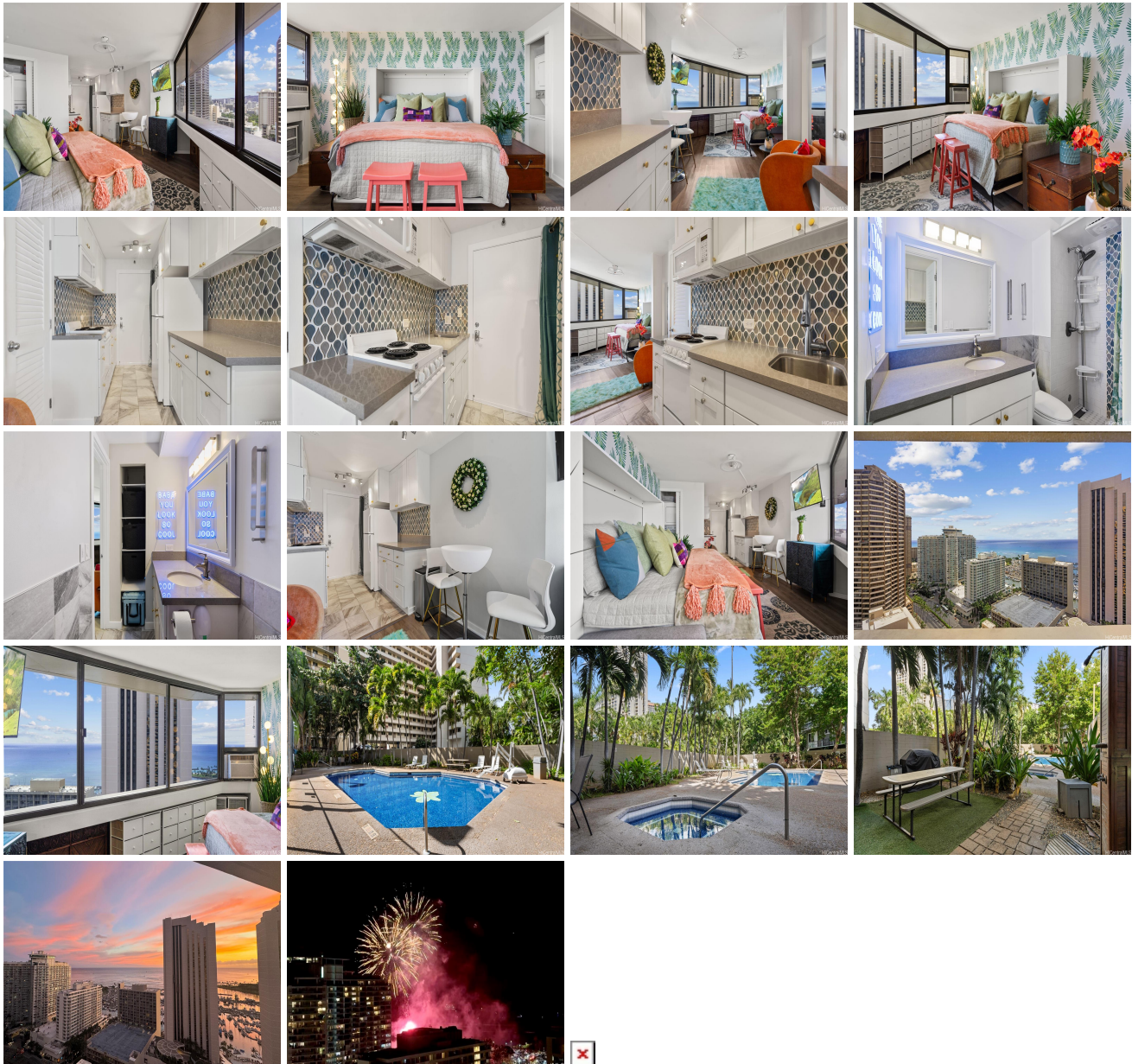


Waikiki Marina Condominium 1700 Ala Moana Boulevard Unit 3003, Honolulu 96815 *

Waikiki Marina Condominium * \$368,000

Beds: 0	MLS#: 202406062, FS	Year Built: 1984
Bath: 1/0	Status: Active	Remodeled:
Living Sq. Ft.: 386	List Date & DOM: 03-08-2024 & 65	Total Parking: 1
Land Sq. Ft.: 38,768	Condition: Above Average	Assessed Value
Lanai Sq. Ft.: 0	Frontage:	Building: \$211,500
Sq. Ft. Other: 0	Tax/Year: \$86/2023	Land: \$83,900
Total Sq. Ft. 386	Neighborhood: Waikiki	Total: \$295,400
Maint./Assoc. \$1,000 / \$0	Flood Zone : Zone AE - Tool	Stories / CPR: 21+ / No
Parking: Assigned, Covered - 1	Frontage:	
Zoning : X2 - Apartment Precinct	View: Coastline, Ocean, Sunset	

Public Remarks: Don't miss out on this exceptional investment opportunity boasting unparalleled views of Oahu's south shore. This unit looks over the most coveted wave in Honolulu, while also offering front row seats to the Friday night fireworks! Tastefully remodeled unit that includes both a full kitchen and washer/dryer combo in unit. This building offers resort-style amenities including a pool, jacuzzi, tennis court, and BBQ area. Plus, enjoy the convenience of assigned covered parking. Situated near Ala Moana Beach, Ala Moana Shopping Center, and an array of restaurants, this location epitomizes convenience. With maintenance fees covering cable TV, electricity, hot water, sewer, and water, all while soaking in those breathtaking ocean views, this is truly an epic opportunity. **Sale Conditions:** None **Schools:** , , * [Request Showing](#), [Photos](#), [History](#), [Maps](#), [Deed](#), [Watch List](#), [Tax Info](#)



Address	Price	Bd & Bth	Living / Avg.	Land Avg.	Lanai	Occ.	FL	DOM
1700 Ala Moana Boulevard 3003	\$368,000	0 & 1/0	386 \$953	38,768 \$9	0	11%	30	65

Address	Tax Maint. Ass.	Assessed Land	Assessed Building	Assessed Total	Ratio	Year & Remodeled
1700 Ala Moana Boulevard 3003	\$86 \$1,000 \$0	\$83,900	\$211,500	\$295,400	125%	1984 & NA

[1700 Ala Moana Boulevard 3003](#) - MLS#: [202406062](#) - Don't miss out on this exceptional investment opportunity boasting unparalleled views of Oahu's south shore. This unit looks over the most coveted view in Honolulu, while also offering front row seats to the Friday night fireworks! Tastefully remodeled unit that includes both a full kitchen and washer/dryer combo in unit. This building offers resort-style amenities including a pool, jacuzzi, tennis court, and BBQ area. Plus, enjoy the convenience of assigned covered parking. Situated near Ala Moana Beach, Ala Moana Shopping Center, and an array of restaurants, this location epitomizes convenience. With maintenance fees covering cable TV, electricity, hot water, sewer, and water, all while soaking in those breathtaking ocean views, this is truly an epic opportunity. **Region:** Metro **Neighborhood:** Waikiki **Condition:** Above Average **Parking:** Assigned, Covered - 1 **Total Parking:** 1 **View:** Coastline, Ocean, Sunset **Frontage:** Pool: **Zoning:** X2 - Apartment Precinct **Sale Conditions:** None **Schools:** , , * [Request Showing](#), [Photos](#), [History](#), [Maps](#), [Deed](#), [Watch List](#), [Tax Info](#)

DOM = Days on Market, Occ. = Occupancy, FL = Floor Number