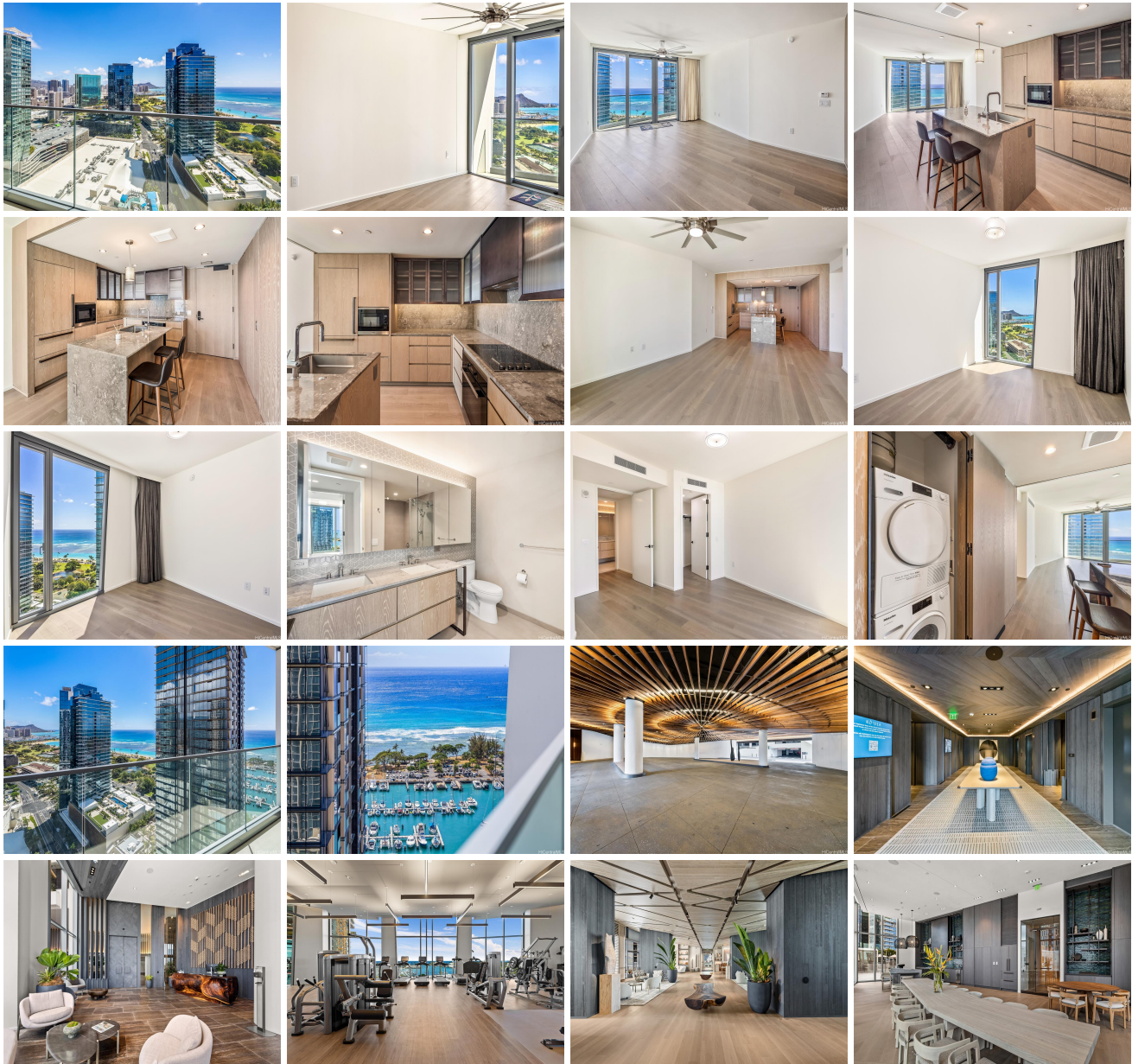


KOULA 1000 Auahi Street Unit 2902, Honolulu 96814 * KOULA * \$1,338,000

Beds: 1	MLS#: 202406069, FS	Year Built: 2022
Bath: 1/0	Status: Active	Remodeled:
Living Sq. Ft.: 758	List Date & DOM: 03-09-2024 & 63	Total Parking: 1
Land Sq. Ft.: 0	Condition: Excellent	Assessed Value
Lanai Sq. Ft.: 63	Frontage: Other	Building: \$1,220,800
Sq. Ft. Other: 0	Tax/Year: \$414/2023	Land: \$35,400
Total Sq. Ft. 821	Neighborhood: Kakaako	Total: \$1,256,200
Maint./Assoc. \$974 / \$28	Flood Zone : Zone AE - Tool	Stories / CPR: 21+ / No
Parking: Assigned, Covered - 1, Garage, Guest, Secured Entry	Frontage: Other	
Zoning : Kak - Kakaako Community Development Project	View: Coastline, Diamond Head, Marina/Canal, Ocean, Sunrise	

Public Remarks: Immaculate and like brand new condition! The largest and best of one bedroom floor plans at Koula offering a large eat-in kitchen with island, top of the line appliances, large living/dining areas, spacious bedroom with walk-in closet, large bathroom w/4 full-sized mirrored medicine cabinets and lower vanity drawers too. Engineered wood flooring and motorized drapes throughout. Enjoy a meal or relax on you very own large covered lanai and capture the breathtaking views of the ocean, marina, Waikiki and Diamond Head too! Experience the luxurious lifestyle with impressive resort-like amenities. Ward Village Community is the place to be with all the conveniences of urban living from shopping, dining, entertainment, recreational activities and minutes from Downtown, Ala Moana, and Waikiki. A great buy! **Sale Conditions:** None **Schools:** , * [Request Showing](#), [Photos](#), [History](#), [Maps](#), [Deed](#), [Watch List](#), [Tax Info](#)





Address	Price	Bd & Bth	Living / Avg.	Land Avg.	Lanai	Occ.	FL	DOM
1000 Auahi Street 2902	\$1,338,000	1 & 1/0	758 \$1,765	0 \$inf	63	5%	29	63

Address	Tax Maint. Ass.	Assessed Land	Assessed Building	Assessed Total	Ratio	Year & Remodeled
1000 Auahi Street 2902	\$414 \$974 \$28	\$35,400	\$1,220,800	\$1,256,200	107%	2022 & NA

[1000 Auahi Street 2902](#) - MLS#: [202406069](#) - Immaculate and like brand new condition! The largest and best of one bedroom floor plans at Koula offering a large eat-in kitchen with island, top of the line appliances, large living/dining areas, spacious bedroom with walk-in closet, large bathroom w/4 full-sized mirrored medicine cabinets and lower vanity drawers too. Engineered wood flooring and motorized drapes throughout. Enjoy a meal or relax on you very own large covered lanai and capture the breathtaking views of the ocean, marina, Waikiki and Diamond Head too! Experience the luxurious lifestyle with impressive resort-like amenities. Ward Village Community is the place to be with all the conveniences of urban living from shopping, dining, entertainment, recreational activities and minutes from Downtown, Ala Moana, and Waikiki. A great buy! **Region:** Metro **Neighborhood:** Kakaako **Condition:** Excellent **Parking:** Assigned, Covered - 1, Garage, Guest, Secured Entry **Total Parking:** 1 **View:** Coastline, Diamond Head, Marina/Canal, Ocean, Sunrise **Frontage:** Other **Pool:** **Zoning:** Kak - Kakaako Community Development Project **Sale Conditions:** None **Schools:** , , * [Request Showing](#), [Photos](#), [History](#), [Maps](#), [Deed](#), [Watch List](#), [Tax Info](#)

DOM = Days on Market, Occ. = Occupancy, FL = Floor Number