

Fairway Villa 2345 Ala Wai Boulevard Unit 2406, Honolulu 96815 * Fairway Villa * \$365,000

Beds: 0	MLS#: 202406144, FS	Year Built: 1974
Bath: 1/0	Status: Active	Remodeled:
Living Sq. Ft.: 364	List Date & DOM: 04-23-2024 & 25	Total Parking: 1
Land Sq. Ft.: 37,810	Condition: Average	Assessed Value
Lanai Sq. Ft.: 77	Frontage:	Building: \$275,600
Sq. Ft. Other: 0	Tax/Year: \$25/2023	Land: \$28,000
Total Sq. Ft. 441	Neighborhood: Waikiki	Total: \$303,900
Maint./Assoc. \$581 / \$0	Flood Zone : Zone AE - Tool	Stories / CPR: 21+ / No

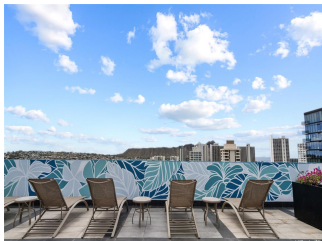
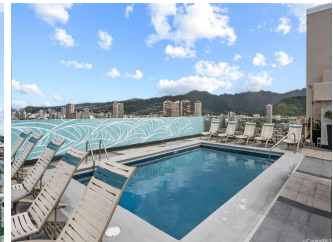
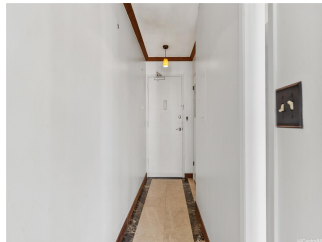
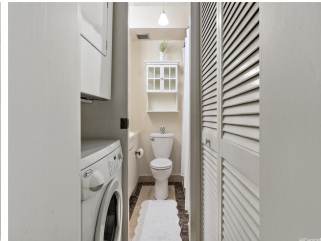
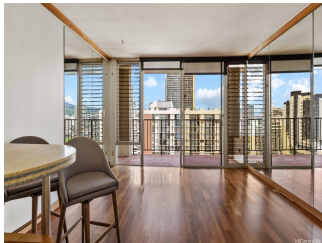
Parking: **Assigned, Covered - 1, Guest, Secured Entry**

Frontage:

[Zoning](#): **X2 - Apartment Precinct**

View: **City, Marina/Canal, Mountain, Ocean**

Public Remarks: Welcome to this high floor studio unit in the highly desirable Fairway Villa! SPECIAL ASSESSMENT IS PAID OFF BY THE SELLER! Enjoy the cool breezes and views of the mountain, Ala Wai Canal, city lights, and the ocean! Well maintained kitchen, bathroom, and washer and dryer inside the unit! Enjoy the brand new roof top deck with a stunning 360-degree view of Diamond Head, Ala Wai, Ko'olau Mountains, and Waikiki Beach! Roof top deck is perfect for entertaining guests with the BBQ area, pool, fireplace and more. Fob access is required to enter the parking structure and the building, including 24-hour security. One assigned covered parking stall plus ample guest parking on the roof of the parking structure. Minimum 30 day rentals. Conveniently located only a block away from the International Market Place and short distance from Waikiki Market, restaurants, and world-famous Waikiki Beach! **Sale Conditions:** None **Schools:** , , * [Request Showing](#), [Photos](#), [History](#), [Maps](#), [Deed](#), [Watch List](#), [Tax Info](#)



Address	Price	Bd & Bth	Living / Avg.	Land Avg.	Lanai	Occ.	FL	DOM
2345 Ala Wai Boulevard 2406	\$365,000	0 & 1/0	364 \$1,003	37,810 \$10	77	17%	24	25

Address	Tax Maint. Ass.	Assessed Land	Assessed Building	Assessed Total	Ratio	Year & Remodeled
2345 Ala Wai Boulevard 2406	\$25 \$581 \$0	\$28,000	\$275,600	\$303,900	120%	1974 & NA

[2345 Ala Wai Boulevard 2406](#) - MLS#: [202406144](#) - Welcome to this high floor studio unit in the highly desirable Fairway Villa! SPECIAL ASSESSMENT IS PAID OFF BY THE SELLER! Enjoy the cool breezes and views of the mountain, Ala Wai Canal, city lights, and the ocean! Well maintained kitchen, bathroom, and washer and dryer inside the unit! Enjoy the brand new roof top deck with a stunning 360-degree view of Diamond Head, Ala Wai, Ko'olau Mountains, and Waikiki Beach! Roof top deck is perfect for entertaining guests with the BBQ area, pool, fireplace and more. Fob access is required to enter the parking structure and the building, including 24-hour security. One assigned covered parking stall plus ample guest parking on the roof of the parking structure. Minimum 30 day rentals. Conveniently located only a block away from the International Market Place and short distance from Waikiki Market, restaurants, and world-famous Waikiki Beach! **Region:** Metro **Neighborhood:** Waikiki **Condition:** Average **Parking:** Assigned, Covered - 1, Guest, Secured Entry **Total Parking:** 1 **View:** City, Marina/Canal, Mountain, Ocean **Frontage:** **Pool:** **Zoning:** X2 - Apartment Precinct **Sale Conditions:** None **Schools:** , , * [Request Showing](#), [Photos](#), [History](#), [Maps](#), [Deed](#), [Watch List](#), [Tax Info](#)

DOM = Days on Market, Occ. = Occupancy, FL = Floor Number