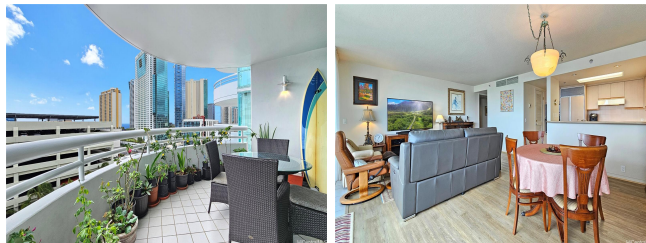


**Uraku Tower Hawaii 1341 Kapiolani Boulevard Unit 12D, Honolulu 96814 \* Uraku Tower Hawaii \* \$598,000 \* Originally \$648,000**

Beds: <b>2</b>	MLS#: <b>202406170, FS</b>	Year Built: <b>1989</b>
Bath: <b>2/0</b>	Status: <b>Active</b>	Remodeled:
Living Sq. Ft.: <b>1,185</b>	List Date & DOM: <b>03-12-2024 &amp; 61</b>	Total Parking: <b>2</b>
Land Sq. Ft.: <b>0</b>	Condition: <b>Excellent</b>	<a href="#">Assessed Value</a>
Lanai Sq. Ft.: <b>199</b>	Frontage: <b>Other</b>	Building: <b>\$375,000</b>
Sq. Ft. Other: <b>0</b>	Tax/Year: <b>\$192/2024</b>	Land: <b>\$284,800</b>
Total Sq. Ft. <b>1,384</b>	Neighborhood: <b>Ala Moana</b>	Total: <b>\$659,800</b>
Maint./Assoc. <b>\$2,422 / \$0</b>	<a href="#">Flood Zone</a> : <b>Zone X - Tool</b>	Stories / CPR: <b>21+ / No</b>
Parking: <b>Assigned, Covered - 2, Secured Entry</b>	Frontage: <b>Other</b>	
<a href="#">Zoning</a> : <b>33 - BMX-3 Community Business M</b>	View: <b>City, Mountain, Ocean</b>	

**Public Remarks:** This inviting corner unit, priced to sell, offers a serene escape in the heart of Honolulu. With 2 bedrooms, 2 bathrooms, and a generous 1,185 sqft, it's an ideal retreat. Step onto one of the two balconies and take in the breathtaking views of the majestic mountains and a glimpse of the ocean. Residents enjoy the convenience of weekly cleaning services and even have access to a limousine service. Located just a stone's throw away from the vibrant Ala Moana Center and the sun-kissed beach, this residence is perfectly situated. Amenities include: exercise room, pool, two jacuzzies, BBQ area, library, meeting room, party room, and wet and dry sauna. Embrace the ultimate resort lifestyle at Uraku Tower, where comfort, convenience, and leisure converge! **Sale Conditions:** None **Schools:** [Jefferson](#), [Washington](#), [Mckinley](#) \* [Request Showing](#), [Photos](#), [History](#), [Maps](#), [Deed](#), [Watch List](#), [Tax Info](#)



Address	Price	Bd & Bth	Living / Avg.	Land   Avg.	Lanai	Occ.	FL	DOM
<a href="#">1341 Kapiolani Boulevard 12D</a>	<b>\$598,000</b>	2 & 2/0	1,185   \$505	0   \$inf	199	30%	12	61

Address	Tax   Maint.   Ass.	Assessed Land	Assessed Building	Assessed Total	Ratio	Year & Remodeled
<a href="#">1341 Kapiolani Boulevard 12D</a>	\$192   \$2,422   \$0	\$284,800	\$375,000	\$659,800	91%	1989 & NA

[1341 Kapiolani Boulevard 12D](#) - MLS#: [202406170](#) - Original price was \$648,000 - This inviting corner unit, priced to sell, offers a serene escape in the heart of Honolulu. With 2 bedrooms, 2 bathrooms, and a generous 1,185 sqft, it's an ideal retreat. Step onto one of the two balconies and take in the breathtaking views of the majestic mountains and a glimpse of the ocean. Residents enjoy the convenience of weekly cleaning services and even have access to a limousine service. Located just a stone's throw away from the vibrant Ala Moana Center and the sun-kissed beach, this residence is perfectly situated. Amenities include: exercise room, pool, two jacuzzies, BBQ area, library, meeting room, party room, and wet and dry sauna. Embrace the ultimate resort lifestyle at Uraku Tower, where comfort, convenience, and leisure converge! **Region:** Metro **Neighborhood:** Ala Moana **Condition:** Excellent **Parking:** Assigned, Covered - 2, Secured Entry **Total Parking:** 2 **View:** City, Mountain, Ocean **Frontage:** Other **Pool:** **Zoning:** 33 - BMX-3 Community Business M **Sale Conditions:** None **Schools:** [Jefferson](#), [Washington](#), [Mckinley](#) \* [Request Showing](#), [Photos](#), [History](#), [Maps](#), [Deed](#), [Watch List](#), [Tax Info](#)

DOM = Days on Market, Occ. = Occupancy, FL = Floor Number