

## **Banyan Tree Plaza 1212 Punahou Street Unit 3103, Honolulu 96826 \* Banyan Tree Plaza \***

**\$575,000**

Beds: **2**  
Bath: **2/0**  
Living Sq. Ft.: **981**

Land Sq. Ft.: **92,478**

Lanai Sq. Ft.: **78**

Sq. Ft. Other: **0**

Total Sq. Ft. **1,059**

Maint./Assoc. **\$1,087 / \$0**

Parking: **Assigned, Covered - 1, Garage, Guest, Secured Entry**

**Zoning: 13 - A-3 High Density Apartment**

MLS#: **202406195, FS**

Status: **Active**

List Date & DOM: **03-13-2024 & 61**

Condition: **Excellent, Above Average, Average**

Frontage: **Ocean**

Tax/Year: **\$123/2024**

Neighborhood: **Punahou**

**Flood Zone: Zone X - Tool**

Year Built: **1974**

Remodeled:

Total Parking: **1**

[Assessed Value](#)

Building: **\$466,700**

Land: **\$72,500**

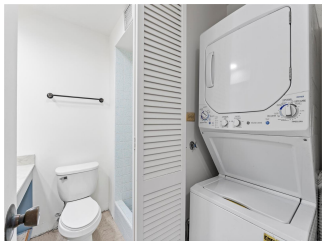
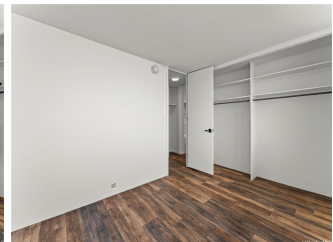
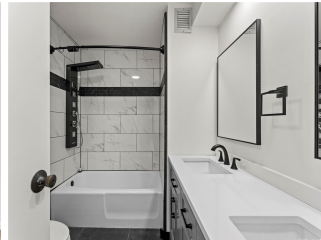
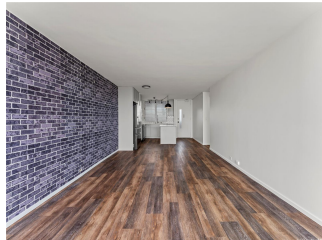
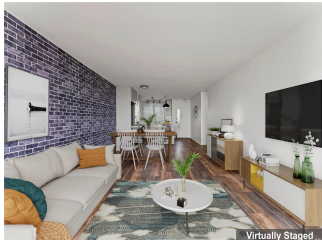
Total: **\$539,200**

Stories / CPR: **One, 21+ / No**

Frontage: **Ocean**

View: **City, Coastline, Diamond Head, Garden, Mountain, Ocean**

**Public Remarks:** Buyers get a 2nd chance, we are back on the market. You have to see this view in person! The pictures do not do it justice, there are stunning ocean/mountain/city views from every room. You will love living in Punahou where you will be close to shopping, schools, restaurants, and have very convenient access to public transportation, the H-1, Waikiki, and Downtown. The unit is very breezy, has plenty of natural light, a very open layout, 981sf living area, 78sf lanai, and has been very tastefully remodeled. Comes with covered parking, washer and dryer in the unit, newer appliances, newer vinyl floors, fresh paint, custom closet organizer, and no popcorn ceiling. It's a very secure building with concrete construction for quiet and privacy, has plenty of guest parking, and amenities that include a remodeled pool, BBQ's, bike and surfboard storage, ping pong, car wash, extra storage, and 24/7 security. A VA loan assumption at 2.75% with early occupancy might be possible. Check out our online tour and make your appointment today. **Sale Conditions:** None **Schools:** [Kaahumanu, Washington, Mckinley](#) \* [Request Showing, Photos, History, Maps, Deed, Watch List, Tax Info](#)





Address	Price	Bd & Bth	Living / Avg.	Land   Avg.	Lanai	Occ.	FL	DOM
<a href="#">1212 Punahou Street 3103</a>	<a href="#">\$575,000</a>	2 & 2/0	981   \$586	92,478   \$6	78	61%	30	61

Address	Tax   Maint.   Ass.	Assessed Land	Assessed Building	Assessed Total	Ratio	Year & Remodeled
<a href="#">1212 Punahou Street 3103</a>	\$123   \$1,087   \$0	\$72,500	\$466,700	\$539,200	107%	1974 & NA

[1212 Punahou Street 3103](#) - MLS#: [202406195](#) - Buyers get a 2nd chance, we are back on the market. You have to see this view in person! The pictures do not do it justice, there are stunning ocean/mountain/city views from every room. You will love living in Punahou where you will be close to shopping, schools, restaurants, and have very convenient access to public transportation, the H-1, Waikiki, and Downtown. The unit is very breezy, has plenty of natural light, a very open layout, 981sf living area, 78sf lanai, and has been very tastefully remodeled. Comes with covered parking, washer and dryer in the unit, newer appliances, newer vinyl floors, fresh paint, custom closet organizer, and no popcorn ceiling. It's a very secure building with concrete construction for quiet and privacy, has plenty of guest parking, and amenities that include a remodeled pool, BBQ's, bike and surfboard storage, ping pong, car wash, extra storage, and 24/7 security. A VA loan assumption at 2.75% with early occupancy might be possible. Check out our online tour and make your appointment today. **Region:** Metro **Neighborhood:** Punahou **Condition:** Excellent, Above Average, Average **Parking:** Assigned, Covered - 1, Garage, Guest, Secured Entry **Total Parking:** 1 **View:** City, Coastline, Diamond Head, Garden, Mountain, Ocean **Frontage:** Ocean **Pool:** **Zoning:** 13 - A-3 High Density Apartment **Sale Conditions:** None **Schools:** [Kaahumanu](#), [Washington](#), [Mckinley](#) \* [Request Showing](#), [Photos](#), [History](#), [Maps](#), [Deed](#), [Watch List](#), [Tax Info](#)

DOM = Days on Market, Occ. = Occupancy, FL = Floor Number