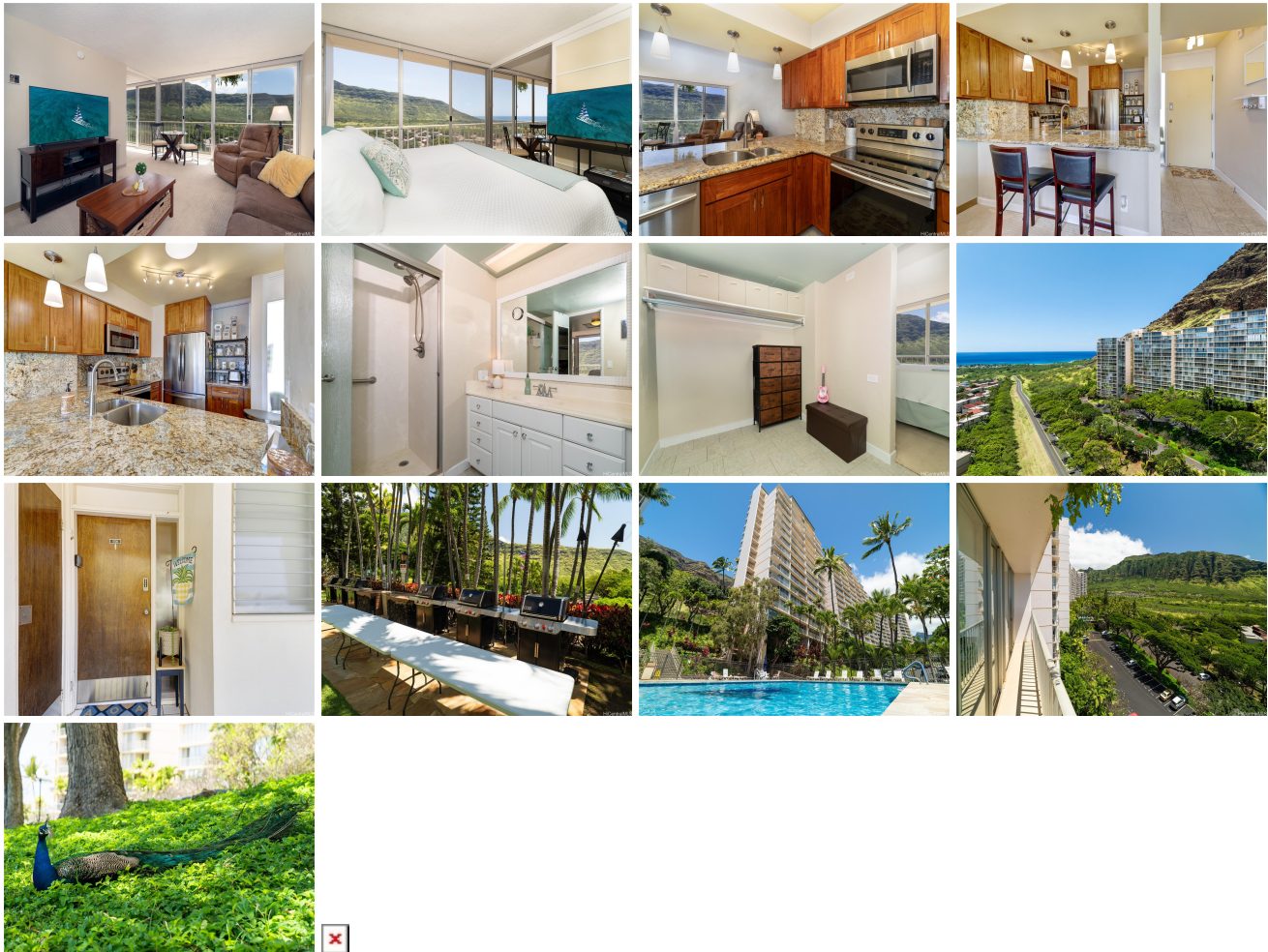


Makaha Valley Towers 84-680 Kili Drive Unit 1006, Waianae 96792 * Makaha Valley Towers

*** \$259,000**

Beds: 1	MLS#: <u>202406215</u>, FS	Year Built: 1970
Bath: 1/0	Status: Active	Remodeled: 2022
Living Sq. Ft.: 680	List Date & DOM: 03-25-2024 & 45	Total Parking: 1
Land Sq. Ft.: 612,759	Condition: Above Average	Assessed Value
Lanai Sq. Ft.: 60	Frontage: Other	Building: \$203,200
Sq. Ft. Other: 0	Tax/Year: \$33/2024	Land: \$31,600
Total Sq. Ft. 740	Neighborhood: Makaha	Total: \$114,800
Maint./Assoc. \$1,065 / \$0	Flood Zone : Zone AE - Tool	Stories / CPR: 15-20 / No
Parking: Guest, Open - 1, Unassigned	Frontage: Other	
Zoning : X2 - Apartment Precinct	View: Coastline, Garden, Mountain, Ocean, Sunrise	

Public Remarks: SELLER OFFERING BUYER CREDIT of \$2130.00 (which equals two months of maintenance fees!) for a full price offer 5/1/2024 thru 5/31/2024 with succesful close. This 1 bedroom, 1 bath condo offers the enchanting beauty of rainbows, and mountain to ocean views, all for an affordable price. Beautifully remodeled kitchen featuring custom cabinetry, stainless steel appliances, granite countertops with surrounding backsplash, with the coveted eating bar remodel. which all elevate the space with a touch of luxury. In the bathroom, rejoice in your sleek walk-in shower and bath area's beachy vibe. The addition of new automatic USB powered vertical blinds stunningly shows off the views of the Waianae mountain range, ocean, and of course, rainbows. Practical updates such as the recent update of the electric outlets and pleasing paint color scheme add to the aesthetic cohesion of the space. This condo comes fully furnished and move-in ready. Service animals only and 30-Day rentals allowed (verify both). Taste the Rainbow. **Sale Conditions:** None **Schools:** [Makaha](#), [Waianae](#), [Waianae](#) * [Request Showing](#), [Photos](#), [History](#), [Maps](#), [Deed](#), [Watch List](#), [Tax Info](#)



Address	Price	Bd & Bth	Living / Avg.	Land Avg.	Lanai	Occ.	FL	DOM
84-680 Kili Drive 1006	\$259,000	1 & 1/0	680 \$381	612,759 \$0	60	45%	10	45

Address	Tax Maint. Ass.	Assessed Land	Assessed Building	Assessed Total	Ratio	Year & Remodeled
84-680 Kili Drive 1006	\$33 \$1,065 \$0	\$31,600	\$203,200	\$114,800	226%	1970 & 2022

[84-680 Kili Drive 1006](#) - MLS#: [202406215](#) - SELLER OFFERING BUYER CREDIT of \$2130.00 (which equals two months of maintenance fees!) for a full price offer 5/1/2024 thru 5/31/2024 with succesful close. This 1 bedroom, 1 bath condo offers the enchanting beauty of rainbows, and mountain to ocean views, all for an affordable price. Beautifully remodeled kitchen featuring custom cabinetry, stainless steel appliances, granite countertops with surrounding backsplash, with the coveted eating bar remodel. which all elevate the space with a touch of luxury. In the bathroom, rejoice in your sleek walk-in shower and bath area's beachy vibe. The addition of new automatic USB powered vertical blinds stunningly shows off the views of the Waianae mountain range, ocean, and of course, rainbows. Practical updates such as the recent update of the electric outlets and pleasing paint color scheme add to the aesthetic cohesion of the space. This condo comes fully furnished and move-in ready. Service animals only and 30-Day rentals allowed (verify both). Taste the Rainbow. **Region:** Leeward **Neighborhood:** Makaha **Condition:** Above Average **Parking:** Guest, Open - 1, Unassigned **Total Parking:** 1 **View:** Coastline, Garden, Mountain, Ocean, Sunrise **Frontage:** Other **Pool:** **Zoning:** X2 - Apartment Precinct **Sale Conditions:** None **Schools:** [Makaha](#), [Waianae](#), [Waianae](#) * [Request Showing](#), [Photos](#), [History](#), [Maps](#), [Deed](#), [Watch List](#), [Tax Info](#)

DOM = Days on Market, Occ. = Occupancy, FL = Floor Number