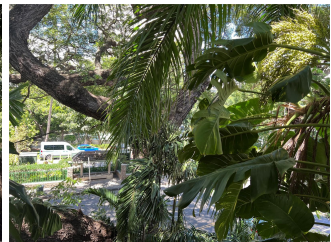
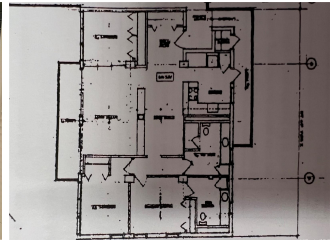


1425 Punahou 1425 Punahou Street Unit 404, Honolulu 96822 * 1425 Punahou * \$534,000

*** Originally \$570,000**

Beds: 3	MLS#: <u>202406250</u>, FS	Year Built: 1960
Bath: 2/0	Status: Active	Remodeled: 2016
Living Sq. Ft.: 1,339	List Date & DOM: 03-15-2024 & 55	Total Parking: 1
Land Sq. Ft.: 8,930	Condition: Above Average, Average	Assessed Value
Lanai Sq. Ft.: 0	Frontage: Other	Building: \$374,300
Sq. Ft. Other: 0	Tax/Year: \$111/2023	Land: \$205,600
Total Sq. Ft. 1,339	Neighborhood: Punahou	Total: \$579,900
Maint./Assoc. \$1,280 / \$0	Flood Zone : Zone X - Tool	Stories / CPR: 4-7 / No
Parking: Assigned, Covered - 1	Frontage: Other	
Zoning : 13 - A-3 High Density Apartment	View: Garden	

Public Remarks: Motivated Seller! This large unit offers a comfortable living space with over 1,339 square feet. Built in 1960, the condo enjoys a prime location in Honolulu, putting you within a short distance of Maryknoll School (just across the street), Punahou School (one block away), and Kapiolani Medical Center. Numerous restaurants, grocery stores, and parks are also close by, with easy freeway access for exploring the rest of the island. The condo features renovated bathrooms and kitchen, with the convenience of stainless steel appliances. Enjoy the two large lanais perfect for relaxing or entertaining, plus the convenience of a washer and dryer, and storage space. This pet-friendly unit (check AOA restrictions) also comes with a covered parking space, making it an ideal spot for those who value comfort and location. Move-in ready and offering a functional layout with modern touches, this condo is your chance to live in a desirable Honolulu location. Don't miss out on this opportunity! **Sale Conditions:** None **Schools:** , , * [Request Showing](#), [Photos](#), [History](#), [Maps](#), [Deed](#), [Watch List](#), [Tax Info](#)





Address	Price	Bd & Bth	Living / Avg.	Land Avg.	Lanai	Occ.	FL	DOM
1425 Punahou Street 404	\$534,000	3 & 2/0	1,339 \$399	8,930 \$60	0	72%	4	55

Address	Tax Maint. Ass.	Assessed Land	Assessed Building	Assessed Total	Ratio	Year & Remodeled
1425 Punahou Street 404	\$111 \$1,280 \$0	\$205,600	\$374,300	\$579,900	92%	1960 & 2016

[1425 Punahou Street 404](#) - MLS#: [202406250](#) - Original price was \$570,000 - Motivated Seller! This large unit offers a comfortable living space with over 1,339 square feet. Built in 1960, the condo enjoys a prime location in Honolulu, putting you within a short distance of Maryknoll School (just across the street), Punahou School (one block away), and Kapiolani Medical Center. Numerous restaurants, grocery stores, and parks are also close by, with easy freeway access for exploring the rest of the island. The condo features renovated bathrooms and kitchen, with the convenience of stainless steel appliances. Enjoy the two large lanais perfect for relaxing or entertaining, plus the convenience of a washer and dryer, and storage space. This pet-friendly unit (check AOA restrictions) also comes with a covered parking space, making it an ideal spot for those who value comfort and location. Move-in ready and offering a functional layout with modern touches, this condo is your chance to live in a desirable Honolulu location. Don't miss out on this opportunity! **Region:** Metro **Neighborhood:** Punahou **Condition:** Above Average, Average **Parking:** Assigned, Covered - 1 **Total Parking:** 1 **View:** Garden **Frontage:** Other **Pool:** Zoning: 13 - A-3 High Density Apartment **Sale Conditions:** None **Schools:** , , * [Request Showing](#), [Photos](#), [History](#), [Maps](#), [Deed](#), [Watch List](#), [Tax Info](#)

DOM = Days on Market, Occ. = Occupancy, FL = Floor Number