

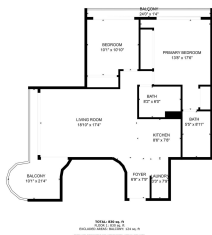
Horizon View Tower 3130 Ala Ilima Street Unit 26D, Honolulu 96818 * Horizon View Tower

* \$560,000 * Originally \$568,000

Beds: 2	MLS#: 202406301, FS	Year Built: 1981
Bath: 2/0	Status: Active	Remodeled: 2015
Living Sq. Ft.: 904	List Date & DOM: 03-13-2024 & 60	Total Parking: 1
Land Sq. Ft.: 0	Condition: Excellent, Above Average	Assessed Value
Lanai Sq. Ft.: 142	Frontage:	Building: \$511,600
Sq. Ft. Other: 0	Tax/Year: \$158/2024	Land: \$74,200
Total Sq. Ft. 1,046	Neighborhood: Salt Lake	Total: \$585,800
Maint./Assoc. \$777 / \$0	Flood Zone : Zone X - Tool	Stories / CPR: / No
Parking: Assigned, Covered - 1, Guest, Secured Entry	Frontage:	
Zoning : 12 - A-2 Medium Density Apartme	View: City, Golf Course, Ocean	

Public Remarks: Discover 26D, a Horizon View Tower high-floor gem boasting unparalleled views stretching from Diamond Head to Pearl Harbor. This spacious condo is a must-see, offering captivating vistas from every room and charming balconies that enhance the ambiance. Inside, you'll find a modern open kitchen with granite countertops, under cabinet lighting, laminate flooring, and popcorn ceilings removed, creating a contemporary feel. The home was upgraded with new electricity, lighting, a full-sized washer/dryer, and refrigerator. With ample natural light and refreshing breezes, this well-maintained unit remains cool and comfortable without needing AC. Practical amenities include fire sprinklers, easy access to freeways and shopping, and a modest maintenance fee powered by solar panels. Security is assured with gated access, and one covered assigned parking spot. Assumable VA loan fixed at 2.75% for qualified applicants. Minutes away from Tripler Hospital and Daniel K. Inouye International Airport. Don't miss this opportunity to experience island living at its finest. Seeing is believing!

Sale Conditions: None **Schools:** , , * [Request Showing](#), [Photos](#), [History](#), [Maps](#), [Deed](#), [Watch List](#), [Tax Info](#)



Address	Price	Bd & Bth	Living / Avg.	Land Avg.	Lanai	Occ.	FL	DOM
3130 Ala Ilima Street 26D	\$560,000	2 & 2/0	904 \$619	0 \$inf	142	68%	26	60

Address	Tax Maint. Ass.	Assessed Land	Assessed Building	Assessed Total	Ratio	Year & Remodeled
3130 Ala Ilima Street 26D	\$158 \$777 \$0	\$74,200	\$511,600	\$585,800	96%	1981 & 2015

[3130 Ala Ilima Street 26D](#) - MLS#: [202406301](#) - Original price was \$568,000 - Discover 26D, a Horizon View Tower high-floor gem boasting unparalleled views stretching from Diamond Head to Pearl Harbor. This spacious condo is a must-see, offering captivating vistas from every room and charming balconies that enhance the ambiance. Inside, you'll find a modern open kitchen with granite countertops, under cabinet lighting, laminate flooring, and popcorn ceilings removed, creating a contemporary feel. The home was upgraded with new electricity, lighting, a full-sized washer/dryer, and refrigerator. With ample natural light and refreshing breezes, this well-maintained unit remains cool and comfortable without needing AC. Practical amenities include fire sprinklers, easy access to freeways and shopping, and a modest maintenance fee powered by solar panels. Security is assured with gated access, and one covered assigned parking spot. Assumable VA loan fixed at 2.75% for qualified applicants. Minutes away from Tripler Hospital and Daniel K. Inouye International Airport. Don't miss this opportunity to experience island living at its finest. Seeing is believing! **Region:** Metro **Neighborhood:** Salt Lake **Condition:** Excellent, Above Average **Parking:** Assigned, Covered - 1, Guest, Secured Entry **Total Parking:** 1 **View:** City, Golf Course, Ocean **Frontage:** **Pool:** **Zoning:** 12 - A-2 Medium Density Apartme **Sale Conditions:** None **Schools:** , , * [Request Showing](#), [Photos](#), [History](#), [Maps](#), [Deed](#), [Watch List](#), [Tax Info](#)

DOM = Days on Market, Occ. = Occupancy, FL = Floor Number