

Waikiki Shore 2161 Kalia Road Unit 816, Honolulu 96815 * Waikiki Shore * \$1,500,000

Beds: **1**

MLS#: **202406312, FS**

Year Built: **1960**

Bath: **1/0**

Status: **Active Under Contract**

Remodeled:

Living Sq. Ft.: **707**

List Date & DOM: **03-13-2024 & 44**

Total Parking: **0**

Land Sq. Ft.: **26,397**

Condition: **Excellent**

[Assessed Value](#)

Lanai Sq. Ft.: **124**

Frontage: **Ocean**

Building: **\$1,817,100**

Sq. Ft. Other: **0**

Tax/Year: **\$2,162/2024**

Land: **\$24,000**

Total Sq. Ft. **831**

Neighborhood: **Waikiki**

Total: **\$1,841,100**

Maint./Assoc. **\$542 / \$0**

[Flood Zone](#): **Zone AE - Tool**

Stories / CPR: **15-20 / No**

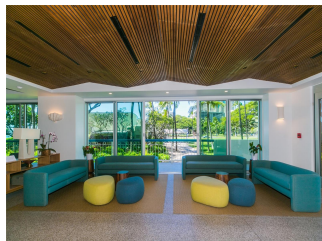
Parking: **None**

Frontage: **Ocean**

[Zoning](#): **X6 - Resort Mixed Use Precinct**

View: **City, Marina/Canal, Ocean, Sunrise**

Public Remarks: Discover your dream escape in the heart of Waikiki with this exquisite one-bedroom, one-bath condominium nestled right on the beachfront. Immerse yourself in luxury and tranquility as you wake up to breathtaking ocean views. This beautifully furnished condominium boasts modern amenities and elegant touches throughout, offering the perfect blend of comfort and style. Relax in the spacious living area, cook up delicious meals in the fully equipped kitchen, and unwind on your private lanai while taking breathtaking ocean, city, mountain, and sunset views. With direct beach access just steps away, you can spend your days lounging on the sand, swimming in the sparkling waters, or exploring the vibrant shops and restaurants of Waikiki. Whether you're seeking a romantic getaway or a rejuvenating retreat, this condominium provides the ultimate beachfront experience. When not occupying this island getaway, choose from many vacation management companies for rental options. Don't miss out on this opportunity. **Sale Conditions:** None **Schools:** , , * [Request Showing, Photos, History, Maps, Deed, Watch List, Tax Info](#)



Address	Price	Bd & Bth	Living / Avg.	Land Avg.	Lanai	Occ.	FL	DOM
2161 Kalia Road 816	\$1,500,000	1 & 1/0	707 \$2,122	26,397 \$57	124	7%	8	44

Address	Tax Maint. Ass.	Assessed Land	Assessed Building	Assessed Total	Ratio	Year & Remodeled
2161 Kalia Road 816	\$2,162 \$542 \$0	\$24,000	\$1,817,100	\$1,841,100	81%	1960 & NA

[2161 Kalia Road 816](#) - MLS#: [202406312](#) - Discover your dream escape in the heart of Waikiki with this exquisite one-bedroom, one-bath condominium nestled right on the beachfront. Immerse yourself in luxury and tranquility as you wake up to breathtaking ocean views. This beautifully furnished condominium boasts modern amenities and elegant touches throughout, offering the perfect blend of comfort and style. Relax in the spacious living area, cook up delicious meals in the fully equipped kitchen, and unwind on your private lanai while taking breathtaking ocean, city, mountain, and sunset views. With direct beach access just steps away, you can spend your days lounging on the sand, swimming in the sparkling waters, or exploring the vibrant shops and restaurants of Waikiki. Whether you're seeking a romantic getaway or a rejuvenating retreat, this condominium provides the ultimate beachfront experience. When not occupying this island getaway, choose from many vacation management companies for rental options. Don't miss out on this opportunity. **Region:** Metro **Neighborhood:** Waikiki **Condition:** Excellent **Parking:** None **Total Parking:** 0 **View:** City, Marina/Canal, Ocean, Sunrise **Frontage:** Ocean **Pool:** **Zoning:** X6 - Resort Mixed Use Precinct **Sale Conditions:** None **Schools:** , , * [Request Showing](#), [Photos](#), [History](#), [Maps](#), [Deed](#), [Watch List](#), [Tax Info](#)

DOM = Days on Market, Occ. = Occupancy, FL = Floor Number