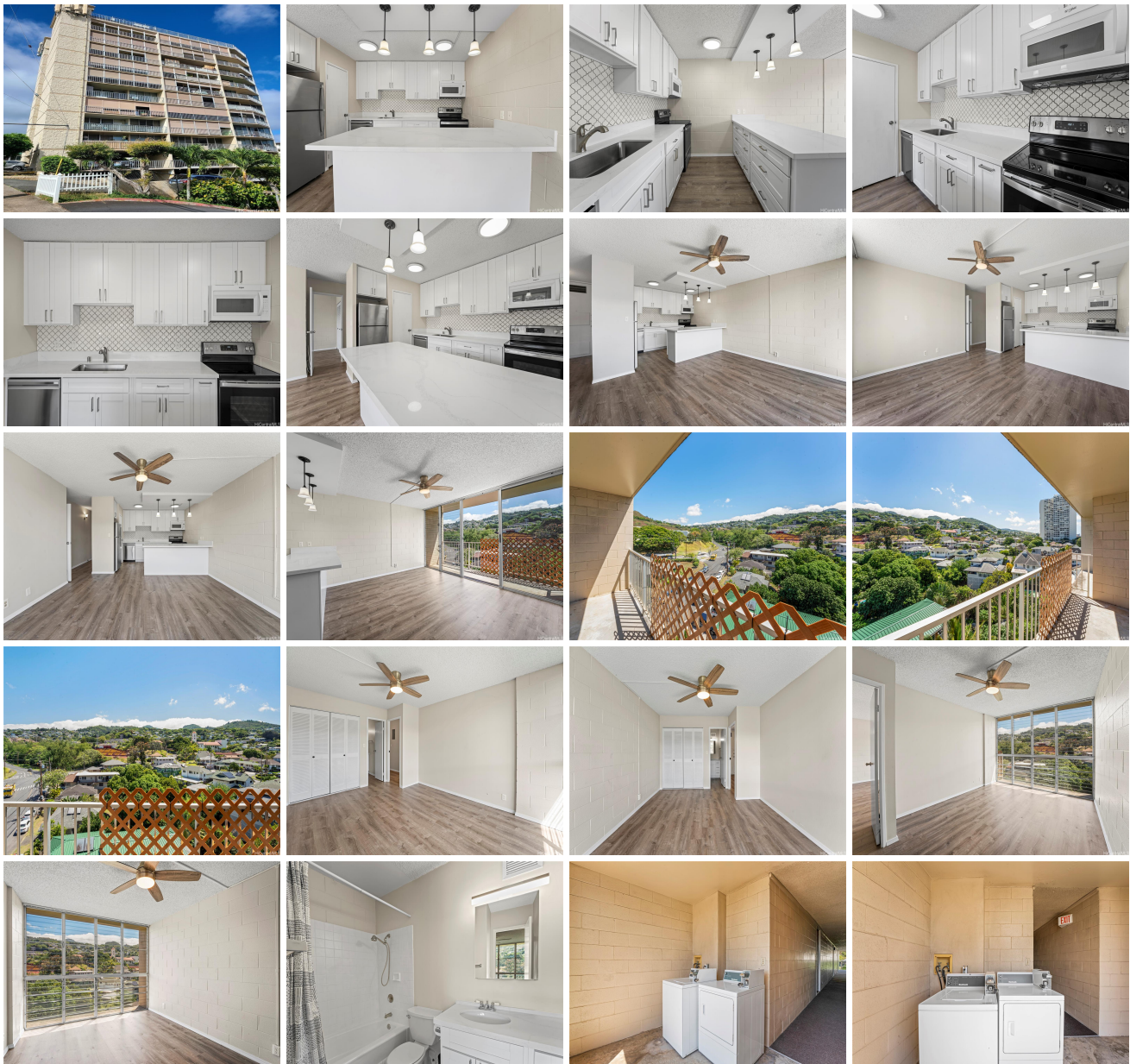


Rose Terrace 1687 Pensacola Street Unit 902, Honolulu 96822 * Rose Terrace * \$345,000 *

Originally \$330,000

Beds: 1	MLS#: 202406354, FS	Year Built: 1975
Bath: 1/0	Status: Active	Remodeled: 2022
Living Sq. Ft.: 563	List Date & DOM: 03-13-2024 & 61	Total Parking: 1
Land Sq. Ft.: 14,680	Condition: Excellent	Assessed Value
Lanai Sq. Ft.: 55	Frontage:	Building: \$266,900
Sq. Ft. Other: 0	Tax/Year: \$95/2023	Land: \$57,900
Total Sq. Ft. 618	Neighborhood: Makiki	Total: \$324,800
Maint./Assoc. \$772 / \$0	Flood Zone : Zone X - Tool	Stories / CPR: 8-14 / No
Parking: Assigned, Covered - 1	Frontage:	
Zoning : 12 - A-2 Medium Density Apartme	View: Mountain	

Public Remarks: Approved Shortsale. 1 Bedroom | 1 bath completely remolded home with 180-degree views of Makiki Valley Mountains. The home has been beautifully remodeled in 2022 with Quartz Countertops and LVP flooring. The kitchen features a breakfast bar, dishwasher, and a quant pantry. No need for A/C, the breeze alone cools the whole home instantly. You can step outside on the lanai and enjoy the mountain views. Both the living room and bedroom have floor-to-ceiling windows that brighten the home. This unit is perfect for investors or first-time home buyers. Only a few minutes from Ala Moana Mall, Punchbowl, University of Hawaii, and a short distance to Pearl Harbor, Hickam, Camp Smith, and Kaneohe Bay. Come stop by, take a look, and fall in love **Sale Conditions:** Short Sale **Schools:** , , * [Request Showing](#), [Photos](#), [History](#), [Maps](#), [Deed](#), [Watch List](#), [Tax Info](#)





Address	Price	Bd & Bth	Living / Avg.	Land Avg.	Lanai	Occ.	FL	DOM
1687 Pensacola Street 902	\$345,000	1 & 1/0	563 \$613	14,680 \$24	55	52%	9	61

Address	Tax Maint. Ass.	Assessed Land	Assessed Building	Assessed Total	Ratio	Year & Remodeled
1687 Pensacola Street 902	\$95 \$772 \$0	\$57,900	\$266,900	\$324,800	106%	1975 & 2022

[1687 Pensacola Street 902](#) - MLS#: [202406354](#) - Original price was \$330,000 - Approved Shortsale. 1 Bedroom | 1 bath completely remolded home with 180-degree views of Makiki Valley Mountains. The home has been beautifully remodeled in 2022 with Quartz Countertops and LVP flooring. The kitchen features a breakfast bar, dishwasher, and a quant pantry. No need for A/C, the breeze alone cools the whole home instantly. You can step outside on the lanai and enjoy the mountain views. Both the living room and bedroom have floor-to-ceiling windows that brighten the home. This unit is perfect for investors or first-time home buyers. Only a few minutes from Ala Moana Mall, Punchbowl, University of Hawaii, and a short distance to Pearl Harbor, Hickam, Camp Smith, and Kaneohe Bay. Come stop by, take a look, and fall in love **Region:** Metro **Neighborhood:** Makiki **Condition:** Excellent **Parking:** Assigned, Covered - 1 **Total Parking:** 1 **View:** Mountain **Frontage:** **Pool:** **Zoning:** 12 - A-2 Medium Density Apartme **Sale Conditions:** Short Sale **Schools:** , , * [Request Showing](#), [Photos](#), [History](#), [Maps](#), [Deed](#), [Watch List](#), [Tax Info](#)

DOM = Days on Market, Occ. = Occupancy, FL = Floor Number