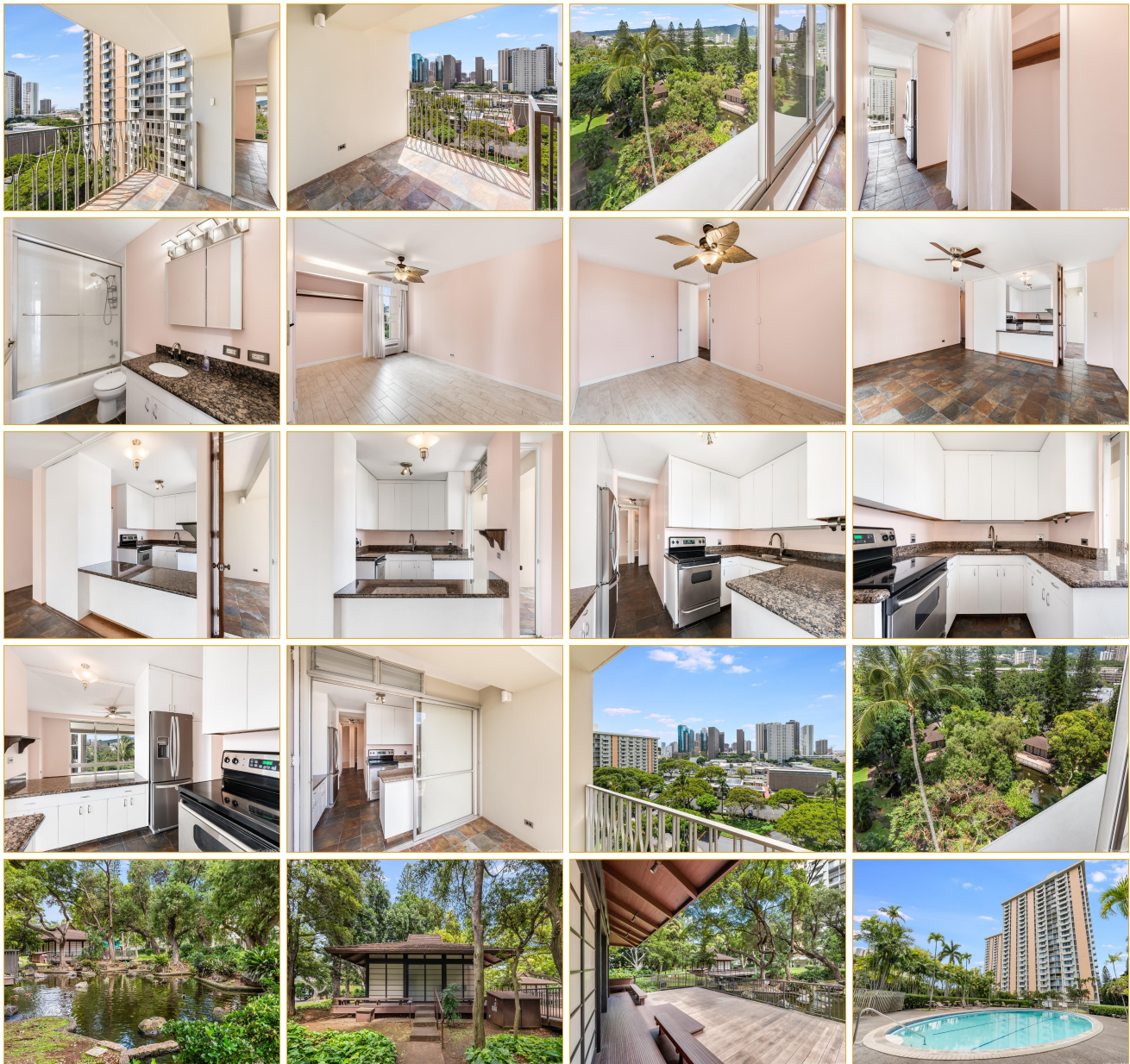


Queen Emma Gardens 1519 Nuuanu Avenue Unit 746, Honolulu 96817 * Queen Emma Gardens * \$399,000 * Originally \$410,000

Beds: 2	MLS#: 202406356, FS	Year Built: 1963
Bath: 1/0	Status: Active	Remodeled:
Living Sq. Ft.: 749	List Date & DOM: 03-15-2024 & 54	Total Parking: 1
Land Sq. Ft.: 354,186	Condition: Above Average	Assessed Value
Lanai Sq. Ft.: 0	Frontage:	Building: \$277,100
Sq. Ft. Other: 0	Tax/Year: \$59/2023	Land: \$123,900
Total Sq. Ft. 749	Neighborhood: Downtown	Total: \$401,000
Maint./Assoc. \$1,195 / \$0	Flood Zone : Zone X - Tool	Stories / CPR: 21+ / No
Parking: Covered - 1, Guest, Street	Frontage:	
Zoning : 12 - A-2 Medium Density Apartme	View: Coastline, Garden, Mountain, Ocean, Sunset	

Public Remarks: MUST-SEE NEW LISTING! Enjoy relaxing on your spacious balcony with serene views of lush gardens and a koi pond. Benefit from 24-hour security, pet-friendly policies, and ample guest parking. Residents also have access to amenities including BBQ stations, a large pool, and a children's playground. Conveniently located near Downtown Honolulu, hospitals, and schools, this is an opportunity not to be missed! Covered parking and multiple security cameras make for easy living. Schedule your viewing today! **Sale Conditions:** None **Schools:** , , * [Request Showing](#), [Photos](#), [History](#), [Maps](#), [Deed](#), [Watch List](#), [Tax Info](#)





Address	Price	Bd & Bth	Living / Avg.	Land Avg.	Lanai	Occ.	FL	DOM
1519 Nuuanu Avenue 746	\$399,000	2 & 1/0	749 \$533	354,186 \$1	0	47%	7	54

Address	Tax Maint. Ass.	Assessed Land	Assessed Building	Assessed Total	Ratio	Year & Remodeled
1519 Nuuanu Avenue 746	\$59 \$1,195 \$0	\$123,900	\$277,100	\$401,000	100%	1963 & NA

<p>1519 Nuuanu Avenue 746 - MLS#: 202406356 - Original price was \$410,000 - MUST-SEE NEW LISTING! Enjoy relaxing on your spacious balcony with serene views of lush gardens and a koi pond. Benefit from 24-hour security, pet-friendly policies, and ample guest parking. Residents also have access to amenities including BBQ stations, a large pool, and a children's playground. Conveniently located near Downtown Honolulu, hospitals, and schools, this is an opportunity not to be missed! Covered parking and multiple security cameras make for easy living. Schedule your viewing today! Region: Metro Neighborhood: Downtown Condition: Above Average Parking: Covered - 1, Guest, Street Total Parking: 1 View: Coastline, Garden, Mountain, Ocean, Sunset Frontage: Pool: Zoning: 12 - A-2 Medium Density Apartme Sale Conditions: None Schools: , , * Request Showing, Photos, History, Maps, Deed, Watch List, Tax Info</p>						
--	--	--	--	--	--	--

DOM = Days on Market, Occ. = Occupancy, FL = Floor Number