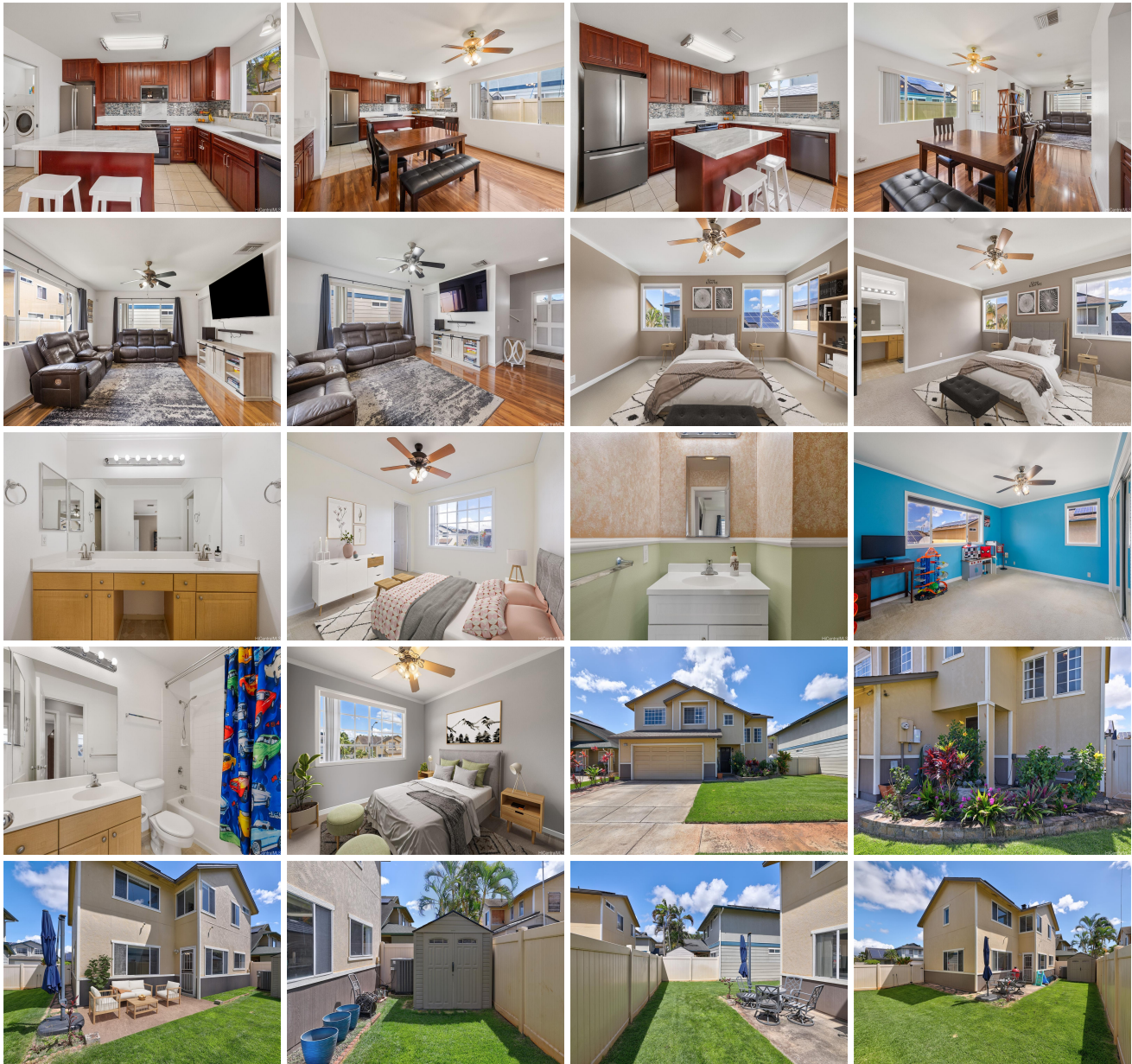
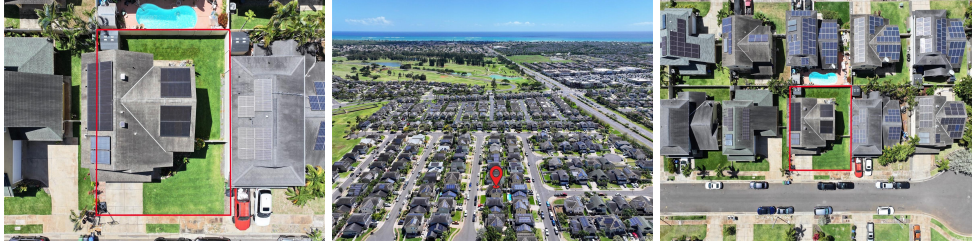


**91-324 Hoalauna Place, Ewa Beach 96706 \* \* \$1,089,000**

Beds: <b>4</b>	MLS#: <b><u>202406372</u>, FS</b>	Year Built: <b>2003</b>
Bath: <b>2/1</b>	Status: <b>Active</b>	Remodeled: <b>2022</b>
Living Sq. Ft.: <b>2,002</b>	List Date & DOM: <b>03-14-2024 &amp; 65</b>	Total Parking: <b>4</b>
Land Sq. Ft.: <b>3,850</b>	Condition: <b>Excellent, Above Average</b>	<a href="#">Assessed Value</a>
Lanai Sq. Ft.: <b>0</b>	Frontage:	Building: <b>\$341,000</b>
Sq. Ft. Other: <b>35</b>	Tax/Year: <b>\$288/2024</b>	Land: <b>\$646,400</b>
Total Sq. Ft. <b>2,037</b>	Neighborhood: <b>Ewa Gen Prescott</b>	Total: <b>\$987,400</b>
Maint./Assoc. <b>\$0 / \$50</b>	<a href="#">Flood Zone</a> : <b>Zone D - Tool</b>	Stories / CPR: <b>Two / No</b>
Parking: <b>2 Car, Garage, Street</b>	Frontage:	
<a href="#">Zoning</a> : <b>05 - R-5 Residential District</b>	View: <b>None</b>	

**Public Remarks:** \* AMAZING NEW SELLER INCENTIVE of a \$25,000 CREDIT to buy down rate and closing costs with full price offer! \* Welcome to this stunning home nestled in a quiet cul de sac within the great community of Ewa Gen Prescott! This well kept spacious home exudes pride of ownership with its beautifully remodeled kitchen, large spacious bedrooms, and manicured lawn with beautiful landscaping and a sprinkler system. Are you looking for ample space, low electricity bills and sustainable living? This home features 32 OWNED photovoltaic panels on net metering, a new central A/C system that was installed in 2022, solar water heater, smart plugs, nest thermostat, vibrant lights, and for your peace of mind, a security system is also in place. Enjoy ample storage with walk in closets, a large garage, and a storage shed to convey with property in the backyard! Bring your furry friends too- this home has a beautiful fenced in backyard. Do not miss the opportunity to call this home your own, where every detail has been thoughtfully designed for your comfort and enjoyment! Schedule your private showing today! **Sale Conditions:** None **Schools:** , , \* [Request Showing](#), [Photos](#), [History](#), [Maps](#), [Deed](#), [Watch List](#), [Tax Info](#)





Address	Price	Bd & Bth	Living / Avg.	Land   Avg.	Lanai	Occ.	FL	DOM
<a href="#">91-324 Hoalauna Place</a>	<a href="#">\$1,089,000</a>	4 & 2/1	2,002   \$544	3,850   \$283	0	0%	0	65

Address	Tax   Maint.   Ass.	Assessed Land	Assessed Building	Assessed Total	Ratio	Year & Remodeled
<a href="#">91-324 Hoalauna Place</a>	\$288   \$0   \$50	\$646,400	\$341,000	\$987,400	110%	2003 & 2022

[91-324 Hoalauna Place](#) - MLS#: [202406372](#) - \* AMAZING NEW SELLER INCENTIVE of a \$25,000 CREDIT to buy down rate and closing costs with full price offer! \* Welcome to this stunning home nestled in a quiet cul de sac within the great community of Ewa Gen Prescott! This well kept spacious home exudes pride of ownership with its beautifully remodeled kitchen, large spacious bedrooms, and manicured lawn with beautiful landscaping and a sprinkler system. Are you looking for ample space, low electricity bills and sustainable living? This home features 32 OWNED photovoltaic panels on net metering, a new central A/C system that was installed in 2022, solar water heater, smart plugs, nest thermostat, vibrant lights, and for your peace of mind, a security system is also in place. Enjoy ample storage with walk in closets, a large garage, and a storage shed to convey with property in the backyard! Bring your furry friends too- this home has a beautiful fenced in backyard. Do not miss the opportunity to call this home your own, where every detail has been thoughtfully designed for your comfort and enjoyment! Schedule your private showing today! **Region:** Ewa Plain **Neighborhood:** Ewa Gen Prescott **Condition:** Excellent, Above Average **Parking:** 2 Car, Garage, Street **Total Parking:** 4 **View:** None **Frontage:** Pool: Community Association Pool **Zoning:** 05 - R-5 Residential District **Sale Conditions:** None **Schools:** , , \* [Request Showing](#), [Photos](#), [History](#), [Maps](#), [Deed](#), [Watch List](#), [Tax Info](#)

DOM = Days on Market, Occ. = Occupancy, FL = Floor Number