

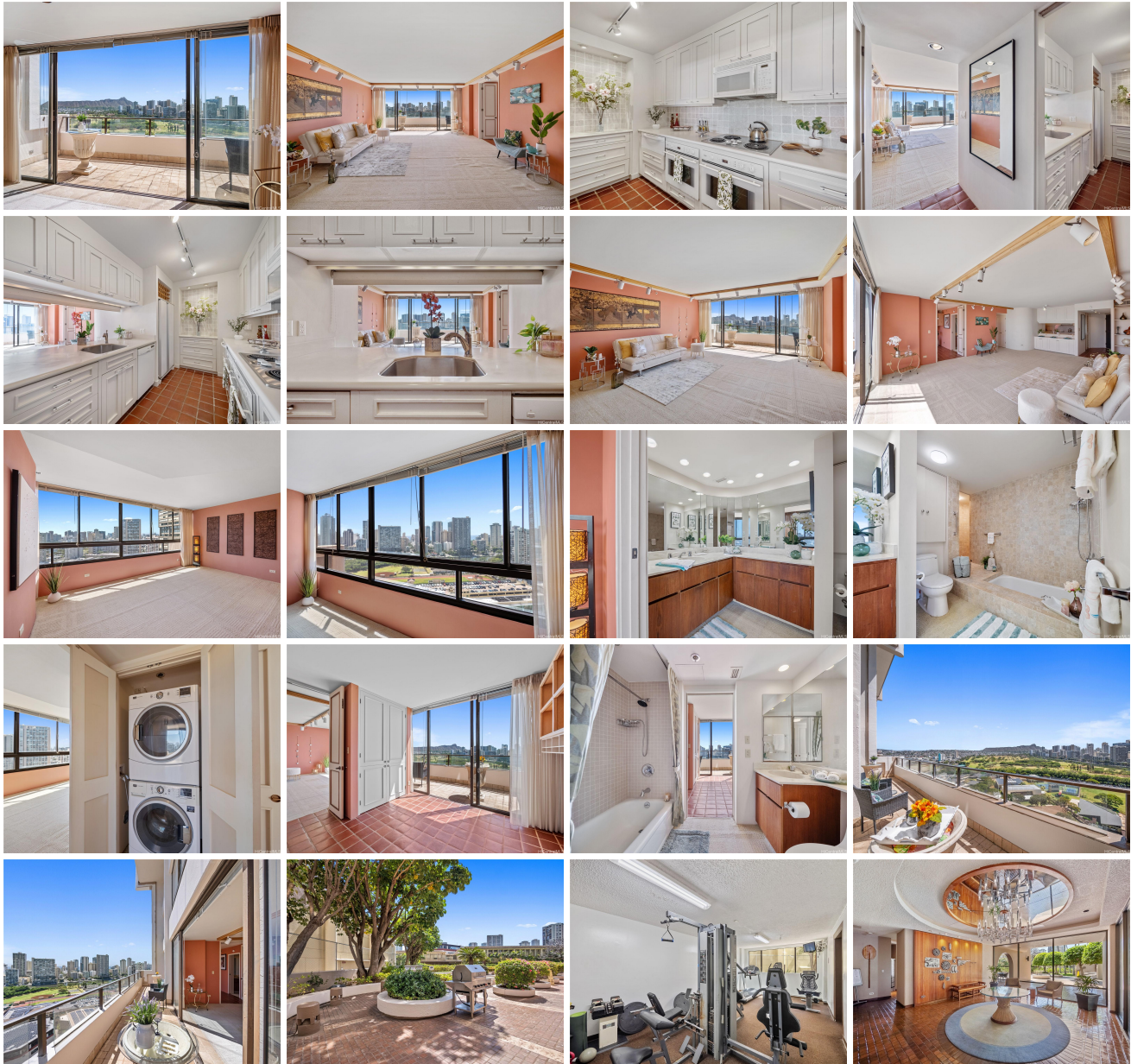
Royal Iolani 583 Kamoku Street Unit 2405, Honolulu 96826 * Royal Iolani * \$800,000

Beds: 2	MLS#: 202406437, FS	Year Built: 1978
Bath: 2/0	Status: Active	Remodeled: 1992
Living Sq. Ft.: 1,159	List Date & DOM: 03-15-2024 & 54	Total Parking: 2
Land Sq. Ft.: 119,006	Condition: Above Average	Assessed Value
Lanai Sq. Ft.: 69	Frontage:	Building: \$622,900
Sq. Ft. Other: 0	Tax/Year: \$188/2023	Land: \$82,400
Total Sq. Ft. 1,228	Neighborhood: Kapiolani	Total: \$705,300
Maint./Assoc. \$1,548 / \$0	Flood Zone : Zone AE - Tool	Stories / CPR: 21+ / No
Parking: Covered - 2	Frontage:	

Zoning: 13 - A-3 High Density Apartment

View: **City, Diamond Head, Golf Course, Marina/Canal, Ocean, Sunset**

Public Remarks: This view will take your breath away, Diamond Head, City, Golf Course, and Ocean! Walk in to this custom 2 bedroom, 2 bath with gourmet kitchen and expansive windows offering unobstructed views. Convenience is paramount with 2 assigned garage parking stalls near the elevators. Royal Iolani is a luxury community, where you feel like you are on vacation at home. Amenities: BBQ's, exercise room, party room, tennis courts, sauna, recreation area, dog park, 24-hour security, Resident manager, fire sprinklers, 2 EV charging stations, 20+ guest parking stalls, pool with jacuzzi, central AC. The maintenance fee includes all the amenities along with water, sewer, garbage, AC, electricity, hot water, Spectrum Cable & internet. The special assessment is also included in the monthly fees for the plumbing pipe replacement project. This beautiful condominium is located next door to Iolani School, Ala Wai Golf Course, close to University of Hawaii, Waikiki, Ala Moana Mall, Down to Earth and freeway access. The building is currently being painted. **Sale Conditions:** None **Schools:** [Ala Wai](#), [Washington](#), [Kaimuki](#) * [Request Showing](#), [Photos](#), [History](#), [Maps](#), [Deed](#), [Watch List](#), [Tax Info](#)





Address	Price	Bd & Bth	Living / Avg.	Land Avg.	Lanai	Occ.	FL	DOM
583 Kamoku Street 2405	\$800,000	2 & 2/0	1,159 \$690	119,006 \$7	69	61%	24	54

Address	Tax Maint. Ass.	Assessed Land	Assessed Building	Assessed Total	Ratio	Year & Remodeled
583 Kamoku Street 2405	\$188 \$1,548 \$0	\$82,400	\$622,900	\$705,300	113%	1978 & 1992

[583 Kamoku Street 2405](#) - MLS#: [202406437](#) - This view will take your breath away, Diamond Head, City, Golf Course, and Ocean! Walk in to this custom 2 bedroom, 2 bath with gourmet kitchen and expansive windows offering unobstructed views. Convenience is paramount with 2 assigned garage parking stalls near the elevators. Royal Iolani is a luxury community, where you feel like you are on vacation at home. Amenities: BBQ's, exercise room, party room, tennis courts, sauna, recreation area, dog park, 24-hour security, Resident manager, fire sprinklers, 2 EV charging stations, 20+ guest parking stalls, pool with jacuzzi, central AC. The maintenance fee includes all the amenities along with water, sewer, garbage, AC, electricity, hot water, Spectrum Cable & internet. The special assessment is also included in the monthly fees for the plumbing pipe replacement project. This beautiful condominium is located next door to Iolani School, Ala Wai Golf Course, close to University of Hawaii, Waikiki, Ala Moana Mall, Down to Earth and freeway access. The building is currently being painted. **Region:** Metro **Neighborhood:** Kapiolani **Condition:** Above Average **Parking:** Covered - 2 **Total Parking:** 2 **View:** City, Diamond Head, Golf Course, Marina/Canal, Ocean, Sunset **Frontage:** **Pool:** **Zoning:** 13 - A-3 High Density Apartment **Sale Conditions:** None **Schools:** [Ala Wai](#), [Washington](#), [Kaimuki](#) * [Request Showing](#), [Photos](#), [History](#), [Maps](#), [Deed](#), [Watch List](#), [Tax Info](#)

DOM = Days on Market, Occ. = Occupancy, FL = Floor Number