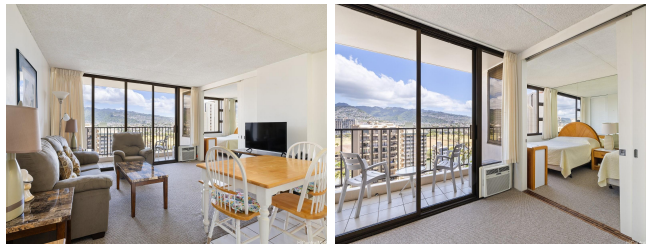


Waikiki Banyan 201 Ohua Avenue Unit T2-1903, Honolulu 96815 * Waikiki Banyan *

\$715,000

Beds: 1	MLS#: 202406527, FS	Year Built: 1977
Bath: 1/0	Status: Active Under Contract	Remodeled:
Living Sq. Ft.: 582	List Date & DOM: 03-25-2024 & 7	Total Parking: 1
Land Sq. Ft.: 99,796	Condition: Excellent	Assessed Value
Lanai Sq. Ft.: 67	Frontage:	Building: \$577,400
Sq. Ft. Other: 0	Tax/Year: \$161/2024	Land: \$112,500
Total Sq. Ft. 649	Neighborhood: Waikiki	Total: \$689,900
Maint./Assoc. \$722 / \$0	Flood Zone : Zone AE - Tool	Stories / CPR: 15-20 / No
Parking: Covered - 1, Guest, Secured Entry, Unassigned	Frontage:	
Zoning : X2 - Apartment Precinct	View: City, Golf Course, Mountain	

Public Remarks: Waikiki Banyan is one of the few condominiums in Waikiki that offers full kitchens and permits short-term rentals. It is conveniently located near Waikiki Beach, shops, and restaurants. The breezy lobby welcomes you as soon as you step into the building. Guests can enjoy amenities such as the pool, whirlpool, playground, and café located on the lobby level. This well-maintained unit features additional space next to the entrance, perfect for storage. It comes fully furnished, including a lanai, kitchenware, and boasting a beautiful mountain view. Start your day by sipping coffee on the lanai while admiring the blue sky, golf course, and mountains. Don't miss out on this wonderful opportunity to own a piece of paradise so close to Waikiki Beach! **Sale Conditions:** None **Schools:** , , * [Request Showing](#), [Photos](#), [History](#), [Maps](#), [Deed](#), [Watch List](#), [Tax Info](#)



Address	Price	Bd & Bth	Living / Avg.	Land Avg.	Lanai	Occ.	FL	DOM
201 Ohua Avenue T2-1903	\$715,000	1 & 1/0	582 \$1,229	99,796 \$7	67	9%	19	7

Address	Tax Maint. Ass.	Assessed Land	Assessed Building	Assessed Total	Ratio	Year & Remodeled
201 Ohua Avenue T2-1903	\$161 \$722 \$0	\$112,500	\$577,400	\$689,900	104%	1977 & NA

[201 Ohua Avenue T2-1903](#) - MLS#: [202406527](#) - Waikiki Banyan is one of the few condominiums in Waikiki that offers full kitchens and permits short-term rentals. It is conveniently located near Waikiki Beach, shops, and restaurants. The breezy lobby welcomes you as soon as you step into the building. Guests can enjoy amenities such as the pool, whirlpool, playground, and café located on the lobby level. This well-maintained unit features additional space next to the entrance, perfect for storage. It comes fully furnished, including a lanai, kitchenware, and boasting a beautiful mountain view. Start your day by sipping coffee on the lanai while admiring the blue sky, golf course, and mountains. Don't miss out on this wonderful opportunity to own a piece of paradise so close to Waikiki Beach! **Region:** Metro **Neighborhood:** Waikiki **Condition:** Excellent **Parking:** Covered - 1, Guest, Secured Entry, Unassigned **Total Parking:** 1 **View:** City, Golf Course, Mountain **Frontage:** **Pool:** **Zoning:** X2 - Apartment Precinct **Sale Conditions:** None **Schools:** , , * [Request Showing](#), [Photos](#), [History](#), [Maps](#), [Deed](#), [Watch List](#), [Tax Info](#)

DOM = Days on Market, Occ. = Occupancy, FL = Floor Number