

55-345 Pakelo Place, Laie 96762 * * \$1,600,000

Beds: **5**
Bath: **6/0**
Living Sq. Ft.: **3,240**
Land Sq. Ft.: **5,874**
Lanai Sq. Ft.: **0**
Sq. Ft. Other: **0**
Total Sq. Ft. **3,240**
Maint./Assoc. **\$0 / \$0**

MLS#: **202406608, FS**
Status: **Active**
List Date & DOM: **03-19-2024 & 60**
Condition: **Excellent**
Frontage:
Tax/Year: **\$356/2023**
Neighborhood: **Laie**
[Flood Zone](#): **Zone X - Tool**

Year Built: **1973**
Remodeled: **2007**
Total Parking: **4**
[Assessed Value](#)
Building: **\$656,500**
Land: **\$763,100**
Total: **\$1,419,600**
Stories / CPR: **Two / No**

Parking: **3 Car+, Carport, Driveway**

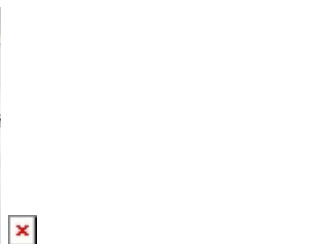
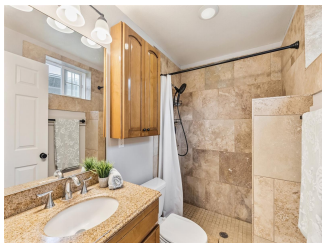
[Zoning](#): **05 - R-5 Residential District**

Frontage:

View: **Mountain, Ocean**

Public Remarks: Welcome to a unique property that seamlessly blends luxurious living with exceptional rental income potential. This spacious home features 5 bedrooms and 6 full baths, providing ample space for a large family or rental guests. Inside, you'll find an open concept living area with updated kitchen, complete with modern finishes and endless storage space in the newly added walk-in pantry as well as a 3 BD & 2 BA accommodation. Upstairs, you'll discover an additional living space, kitchen, 2 bedrooms & 3 baths, as well as an open area that welcomes versatility. Step outside to enjoy scenic ocean views from your 2nd story balcony that extends the entire length of the home, or entertain under the covered lanai, large enough to host a crowd. The front yard has been thoughtfully designed for efficient living, housing the 3 Tesla backup batteries that support the *owned* 78 solar panels above. Additionally, a huge shed offers storage space for outdoor equipment or could even be converted into a workshop or studio, and all neatly tucked behind a beautifully painted privacy fence. Don't miss this rare opportunity to experience multifaceted living at its finest in this remarkable home. **Sale**

Conditions: None **Schools:** , , * [Request Showing](#), [Photos](#), [History](#), [Maps](#), [Deed](#), [Watch List](#), [Tax Info](#)



Address	Price	Bd & Bth	Living / Avg.	Land Avg.	Lanai	Occ.	FL	DOM
55-345 Pakelo Place	\$1,600,000	5 & 6/0	3,240 \$494	5,874 \$272	0	0%	0	60

Address	Tax Maint. Ass.	Assessed Land	Assessed Building	Assessed Total	Ratio	Year & Remodeled
55-345 Pakelo Place	\$356 \$0 \$0	\$763,100	\$656,500	\$1,419,600	113%	1973 & 2007

[55-345 Pakelo Place](#) - MLS#: [202406608](#) - Welcome to a unique property that seamlessly blends luxurious living with exceptional rental income potential. This spacious home features 5 bedrooms and 6 full baths, providing ample space for a large family or rental guests. Inside, you'll find an open concept living area with updated kitchen, complete with modern finishes and endless storage space in the newly added walk-in pantry as well as a 3 BD & 2 BA accommodation. Upstairs, you'll discover an additional living space, kitchen, 2 bedrooms & 3 baths, as well as an open area that welcomes versatility. Step outside to enjoy scenic ocean views from your 2nd story balcony that extends the entire length of the home, or entertain under the covered lanai, large enough to host a crowd. The front yard has been thoughtfully designed for efficient living, housing the 3 Tesla backup batteries that support the *owned* 78 solar panels above. Additionally, a huge shed offers storage space for outdoor equipment or could even be converted into a workshop or studio, and all neatly tucked behind a beautifully painted privacy fence. Don't miss this rare opportunity to experience multifaceted living at its finest in this remarkable home. **Region:** North Shore **Neighborhood:** Laie **Condition:** Excellent **Parking:** 3 Car+, Carport, Driveway **Total Parking:** 4 **View:** Mountain, Ocean **Frontage:** **Pool:** None **Zoning:** 05 - R-5 Residential District **Sale Conditions:** None **Schools:** , , * [Request Showing](#), [Photos](#), [History](#), [Maps](#), [Deed](#), [Watch List](#), [Tax Info](#)

DOM = Days on Market, Occ. = Occupancy, FL = Floor Number