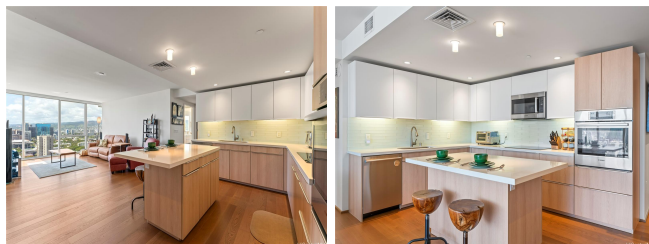


Symphony Honolulu 888 Kapiolani Boulevard Unit 3410, Honolulu 96813 * Symphony

Honolulu * \$1,290,000

Beds: 2	MLS#: 202406650, FS	Year Built: 2016
Bath: 2/0	Status: Active Under Contract	Remodeled:
Living Sq. Ft.: 1,142	List Date & DOM: 03-24-2024 & 7	Total Parking: 2
Land Sq. Ft.: 0	Condition: Excellent	Assessed Value
Lanai Sq. Ft.: 0	Frontage: Other	Building: \$1,373,900
Sq. Ft. Other: 0	Tax/Year: \$393/2023	Land: \$72,500
Total Sq. Ft. 1,142	Neighborhood: Kakaako	Total: \$1,446,400
Maint./Assoc. \$984 / \$0	Flood Zone : Zone X - Tool	Stories / CPR: 21+ / No
Parking: Assigned, Covered - 2, Guest, Tandem	Frontage: Other	
Zoning : Kak - Kakaako Community Development Project	View: City, Mountain, Ocean, Sunset	

Public Remarks: Presenting a Spectacular 2-Bedroom 2-Bath Haven: This magnificent 1,142 sq ft luxury residence boasts views from mountain to ocean, capturing breathtaking sunset and cityscapes through its floor-to-ceiling windows. This residence showcases a Studio Becker Kitchen with beautiful cabinetry, polished Quartz countertops, a glass tile backsplash, and Bosch appliances. Indulge in modern comforts with central AC, washer/dryer, and hardwood flooring in living areas complemented by carpet in the bedrooms. Two tandem parking stalls and a rare 149 sqft storage unit adds convenience and exclusivity to this opulent offering. Symphony Honolulu, residents enjoy privileged access to an expansive recreation deck, featuring an infinity pool, sauna, gym, yoga studio, dog park and private cabanas. State-of-the-art amenities include a media room, BBQ areas, and private guest suites, while sustainability is embraced with PV panels. Pet-friendly (please verify), and EV charging stations. A MUST SEE. Join us for the Brokers Open on Wednesday, March 27th, from 9:30 am to 11:30 am, followed by the Open House on March 31st, from 2 pm to 5 pm. Private showings are available by appointment only. **Sale Conditions:** None **Schools:** [Royal](#), [Keelikolani](#), [Mckinley](#) * [Request Showing](#), [Photos](#), [History](#), [Maps](#), [Deed](#), [Watch List](#), [Tax Info](#)



Address	Price	Bd & Bth	Living / Avg.	Land Avg.	Lanai	Occ.	FL	DOM
888 Kapiolani Boulevard 3410	\$1,290,000	2 & 2/0	1,142 \$1,130	0 \$inf	0	61%	32	7

Address	Tax Maint. Ass.	Assessed Land	Assessed Building	Assessed Total	Ratio	Year & Remodeled
888 Kapiolani Boulevard 3410	\$393 \$984 \$0	\$72,500	\$1,373,900	\$1,446,400	89%	2016 & NA

[888 Kapiolani Boulevard 3410](#) - MLS#: [202406650](#) - Presenting a Spectacular 2-Bedroom 2-Bath Haven: This magnificent 1,142 sq ft luxury residence boasts views from mountain to ocean, capturing breathtaking sunset and cityscapes through its floor-to-ceiling windows. This residence showcases a Studio Becker Kitchen with beautiful cabinetry, polished Quartz countertops, a glass tile backsplash, and Bosch appliances. Indulge in modern comforts with central AC, washer/dryer, and hardwood flooring in living areas complemented by carpet in the bedrooms. Two tandem parking stalls and a rare 149 sqft storage unit adds convenience and exclusivity to this opulent offering. Symphony Honolulu, residents enjoy privileged access to an expansive recreation deck, featuring an infinity pool, sauna, gym, yoga studio, dog park and private cabanas. State-of-the-art amenities include a media room, BBQ areas, and private guest suites, while sustainability is embraced with PV panels. Pet-friendly (please verify), and EV charging stations. A MUST SEE. Join us for the Brokers Open on Wednesday, March 27th, from 9:30 am to 11:30 am, followed by the Open House on March 31st, from 2 pm to 5 pm. Private showings are available by appointment only. **Region:** Metro **Neighborhood:** Kakaako **Condition:** Excellent **Parking:** Assigned, Covered - 2, Guest, Tandem **Total Parking:** 2 **View:** City, Mountain, Ocean, Sunset **Frontage:** Other **Pool:** **Zoning:** Kak - Kakaako Community Development Project **Sale Conditions:** None **Schools:** [Royal](#), [Keelikolani](#), [Mckinley](#) * [Request Showing](#), [Photos](#), [History](#), [Maps](#), [Deed](#), [Watch List](#), [Tax Info](#)

DOM = Days on Market, Occ. = Occupancy, FL = Floor Number