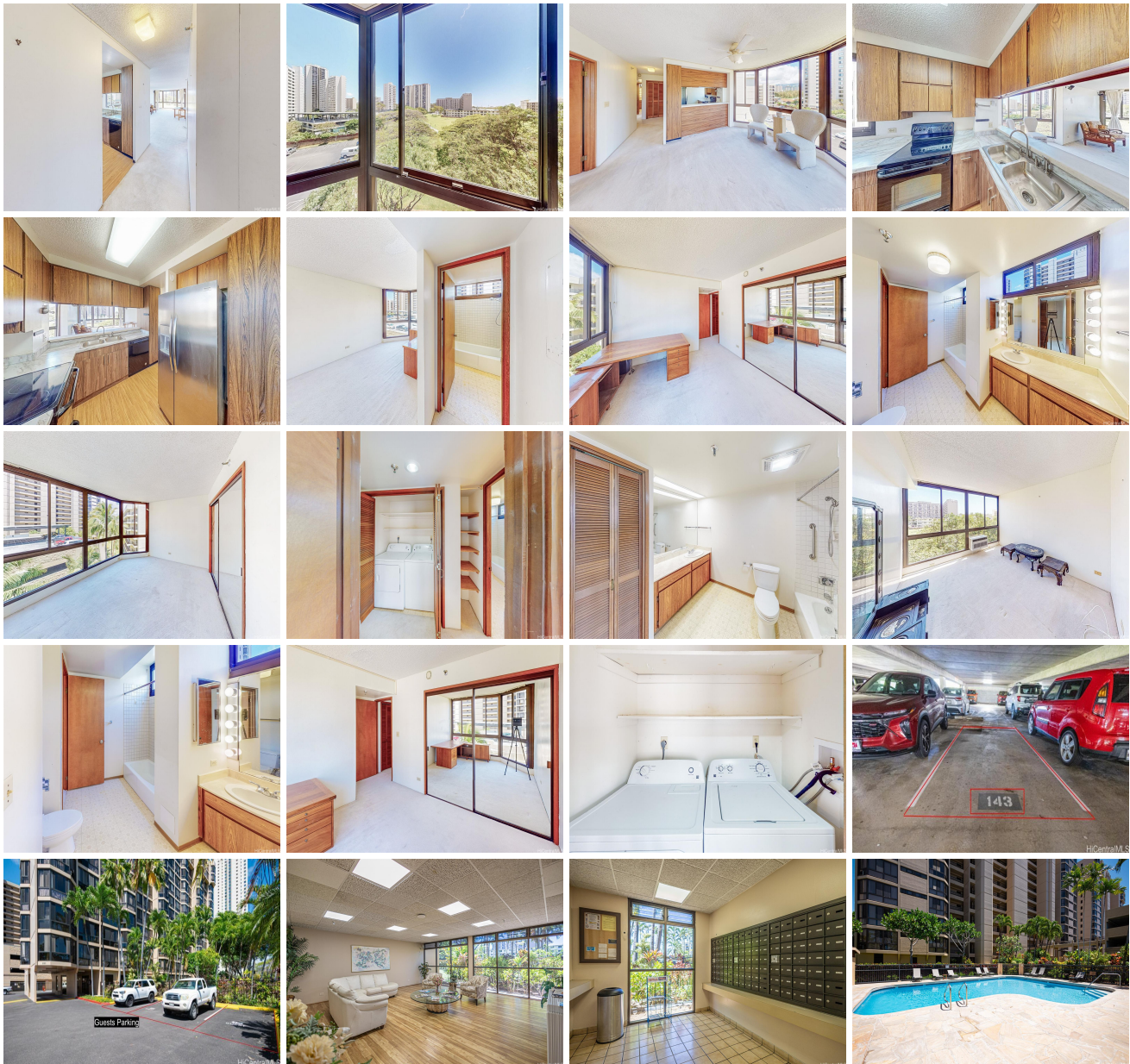


Country Club Plaza 5080 Likini Street Unit 518, Honolulu 96818 * Country Club Plaza *

\$775,000

Beds: 3	MLS#: 202406651, FS	Year Built: 1985
Bath: 2/0	Status: Active	Remodeled:
Living Sq. Ft.: 1,504	List Date & DOM: 04-24-2024 & 24	Total Parking: 2
Land Sq. Ft.: 199,984	Condition: Above Average	Assessed Value
Lanai Sq. Ft.: 0	Frontage:	Building: \$674,000
Sq. Ft. Other: 0	Tax/Year: \$155/2023	Land: \$97,600
Total Sq. Ft. 1,504	Neighborhood: Salt Lake	Total: \$771,600
Maint./Assoc. \$1,075 / \$0	Flood Zone : Zone X - Tool	Stories / CPR: 15-20 / No
Parking: Assigned, Covered - 1, Open - 1	Frontage:	
Zoning : 12 - A-2 Medium Density Apartme	View: Garden	

Public Remarks: Discover the epitome of convenience in this 3-bed,2-bath condo located in the heart of Salt Lake, Honolulu. Boasting a prime location with easy access to downtown, this residence offers a perfect blend of city living and comfort. Immerse yourself in the spacious interiors, boasting with updated appliances. Enjoy the light and views on three sides (including a view over the park) from your floor to ceiling windows and take advantage of ALL the community amenities. With proximity to schools, parks, and urban conveniences, this condo presents an unparalleled opportunity for contemporary island living. Schedule a showing today and envision the lifestyle awaiting you in this Salt Lake gem! **Sale Conditions:** None
Schools: , , * [Request Showing](#), [Photos](#), [History](#), [Maps](#), [Deed](#), [Watch List](#), [Tax Info](#)





Address	Price	Bd & Bth	Living / Avg.	Land Avg.	Lanai	Occ.	FL	DOM
5080 Likini Street 518	\$775,000	3 & 2/0	1,504 \$515	199,984 \$4	0	59%	5	24

Address	Tax Maint. Ass.	Assessed Land	Assessed Building	Assessed Total	Ratio	Year & Remodeled
5080 Likini Street 518	\$155 \$1,075 \$0	\$97,600	\$674,000	\$771,600	100%	1985 & NA

<p>5080 Likini Street 518 - MLS#: 202406651 - Discover the epitome of convenience in this 3-bed,2-bath condo located in the heart of Salt Lake, Honolulu. Boasting a prime location with easy access to downtown, this residence offers a perfect blend of city living and comfort. Immerse yourself in the spacious interiors, boasting with updated appliances. Enjoy the light and views on three sides (including a view over the park) from your floor to ceiling windows and take advantage of ALL the community amenities. With proximity to schools, parks, and urban conveniences, this condo presents an unparalleled opportunity for contemporary island living. Schedule a showing today and envision the lifestyle awaiting you in this Salt Lake gem! Region: Metro Neighborhood: Salt Lake Condition: Above Average Parking: Assigned, Covered - 1, Open - 1 Total Parking: 2 View: Garden Frontage: Pool: Zoning: 12 - A-2 Medium Density Apartme Sale Conditions: None Schools: , , * Request Showing, Photos, History, Maps, Deed, Watch List, Tax Info</p>						
---	--	--	--	--	--	--

DOM = Days on Market, Occ. = Occupancy, FL = Floor Number