

## **Symphony Honolulu 888 Kapiolani Boulevard Unit 2509, Honolulu 96813 \* Symphony**

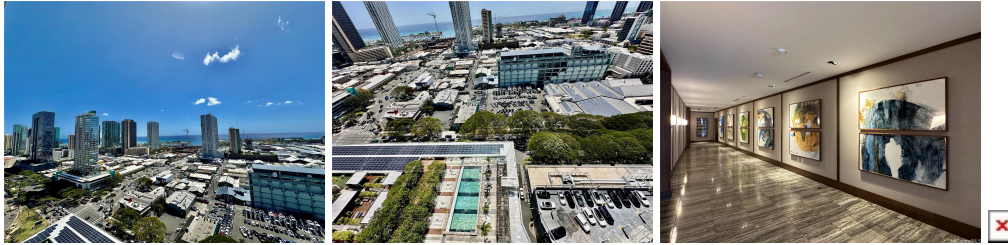
**Honolulu \* \$1,750,000**

Beds: <b>3</b>	MLS#: <b><u>202406657</u>, FS</b>	Year Built: <b>2016</b>
Bath: <b>2/0</b>	Status: <b>Active</b>	Remodeled:
Living Sq. Ft.: <b>1,520</b>	List Date & DOM: <b>03-22-2024 &amp; 49</b>	Total Parking: <b>2</b>
Land Sq. Ft.: <b>0</b>	Condition: <b>Excellent</b>	<a href="#">Assessed Value</a>
Lanai Sq. Ft.: <b>117</b>	Frontage:	Building: <b>\$1,478,700</b>
Sq. Ft. Other: <b>0</b>	Tax/Year: <b>\$389/2023</b>	Land: <b>\$96,400</b>
Total Sq. Ft. <b>1,637</b>	Neighborhood: <b>Kakaako</b>	Total: <b>\$1,575,100</b>
Maint./Assoc. <b>\$1,308 / \$0</b>	<a href="#">Flood Zone</a> : <b>Zone X - Tool</b>	Stories / CPR: / <b>No</b>
Parking: <b>Covered - 2, Garage, Guest, Secured Entry</b>	Frontage:	
<a href="#">Zoning</a> : <b>Kak - Kakaako Community Development Project</b>	View: <b>City, Diamond Head, Mountain, Ocean, Sunset</b>	

**Public Remarks:** Step into luxury living with this turn-key, pet-friendly 3-bedroom, 2-bathroom sanctuary in Symphony Honolulu! Nestled in the coveted 09 stack, this residence offers an invitingly spacious living room flooded with natural light and Full ocean views through floor-to-ceiling windows. The chef-inspired kitchen is a culinary delight, boasting Bosch stainless steel appliances, Studio Becker cabinets, polished quartz countertops, and a stunning glass tile backsplash. Unwind in the primary suite, complete with a custom walk-in closet and a luxurious double shower. With a dedicated laundry room, laundry day becomes a breeze, providing ample space for cleaning supplies and outdoor gear. Enjoy resort-like amenities, including an infinity pool, jacuzzi, cabanas, gym, private dining, movie theatre, and guest suites, perfect for entertaining family and friends. Parking is a breeze with 2 side-by-side stalls located on the 5th floor. Symphony Honolulu's prime location near Ala Moana Center, Downtown Honolulu, and Queen's Medical Center makes it the epitome of urban convenience and luxury living. Furniture is negotiable, allowing for customization to suit your lifestyle and preferences. **Sale Conditions:** None **Schools:** , ,

\* [Request Showing](#), [Photos](#), [History](#), [Maps](#), [Deed](#), [Watch List](#), [Tax Info](#)





Address	Price	Bd & Bth	Living / Avg.	Land   Avg.	Lanai	Occ.	FL	DOM
<a href="#">888 Kapiolani Boulevard 2509</a>	<a href="#">\$1,750,000</a>	3 & 2/0	1,520   \$1,151	0   \$inf	117	62%	25	49

Address	Tax   Maint.   Ass.	Assessed Land	Assessed Building	Assessed Total	Ratio	Year & Remodeled
<a href="#">888 Kapiolani Boulevard 2509</a>	\$389   \$1,308   \$0	\$96,400	\$1,478,700	\$1,575,100	111%	2016 & NA

[888 Kapiolani Boulevard 2509](#) - MLS#: [202406657](#) - Step into luxury living with this turn-key, pet-friendly 3-bedroom, 2-bathroom sanctuary in Symphony Honolulu! Nestled in the coveted 09 stack, this residence offers an invitingly spacious living room flooded with natural light and Full ocean views through floor-to-ceiling windows. The chef-inspired kitchen is a culinary delight, boasting Bosch stainless steel appliances, Studio Becker cabinets, polished quartz countertops, and a stunning glass tile backsplash. Unwind in the primary suite, complete with a custom walk-in closet and a luxurious double shower. With a dedicated laundry room, laundry day becomes a breeze, providing ample space for cleaning supplies and outdoor gear. Enjoy resort-like amenities, including an infinity pool, jacuzzi, cabanas, gym, private dining, movie theatre, and guest suites, perfect for entertaining family and friends. Parking is a breeze with 2 side-by-side stalls located on the 5th floor. Symphony Honolulu's prime location near Ala Moana Center, Downtown Honolulu, and Queen's Medical Center makes it the epitome of urban convenience and luxury living. Furniture is negotiable, allowing for customization to suit your lifestyle and preferences. **Region:** Metro **Neighborhood:** Kakaako **Condition:** Excellent **Parking:** Covered - 2, Garage, Guest, Secured Entry **Total Parking:** 2 **View:** City, Diamond Head, Mountain, Ocean, Sunset **Frontage:** Pool: **Zoning:** Kak - Kakaako Community Development Project **Sale Conditions:** None **Schools:** , , \* [Request Showing](#), [Photos](#), [History](#), [Maps](#), [Deed](#), [Watch List](#), [Tax Info](#)

DOM = Days on Market, Occ. = Occupancy, FL = Floor Number