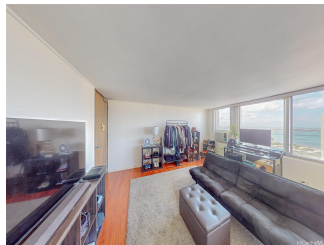


**Pearlridge Square 98-288 Kaonohi Street Unit 3102, Aiea 96701 \* Pearlridge Square \***

**\$415,000**

Beds: <b>1</b>	MLS#: <b>202406773, FS</b>	Year Built: <b>1980</b>
Bath: <b>1/0</b>	Status: <b>Active</b>	Remodeled:
Living Sq. Ft.: <b>515</b>	List Date & DOM: <b>04-10-2024 &amp; 36</b>	Total Parking: <b>1</b>
Land Sq. Ft.: <b>50,007</b>	Condition: <b>Above Average</b>	<a href="#">Assessed Value</a>
Lanai Sq. Ft.: <b>0</b>	Frontage:	Building: <b>\$319,000</b>
Sq. Ft. Other: <b>0</b>	Tax/Year: <b>\$101/2023</b>	Land: <b>\$26,200</b>
Total Sq. Ft. <b>515</b>	Neighborhood: <b>Pearlridge</b>	Total: <b>\$345,200</b>
Maint./Assoc. <b>\$504 / \$0</b>	<a href="#">Flood Zone</a> : <b>Zone X - Tool</b>	Stories / CPR: <b>8-14 / No</b>
Parking: <b>Assigned, Covered - 1</b>	Frontage:	
<a href="#">Zoning</a> : <b>12 - A-2 Medium Density Apartme</b>	View: <b>City, Ocean</b>	

**Public Remarks:** Experience convenient island living in this charming 1-bedroom, 1-bathroom condo nestled in the heart of Aiea. This cozy residence offers a comfortable living space with ocean views. The open floor plan maximizes space and natural light, creating a welcoming atmosphere throughout. Enjoy preparing meals in the comfort of your home, then relax by soaking in the views. The bedroom provides a peaceful retreat, while the bathroom offers both style and convenience. With its convenient location near shopping, dining, and transportation options, this condo is the perfect opportunity to embrace the relaxed lifestyle of Aiea. Don't miss out - schedule a showing today and make this your island oasis! **Sale Conditions:** None  
**Schools:** , , \* [Request Showing](#), [Photos](#), [History](#), [Maps](#), [Deed](#), [Watch List](#), [Tax Info](#)



Address	Price	Bd & Bth	Living / Avg.	Land   Avg.	Lanai	Occ.	FL	DOM
<a href="#">98-288 Kaonohi Street 3102</a>	<a href="#">\$415,000</a>	1 & 1/0	515   \$806	50,007   \$8	0	66%	3	36

Address	Tax   Maint.   Ass.	Assessed Land	Assessed Building	Assessed Total	Ratio	Year & Remodeled
<a href="#">98-288 Kaonohi Street 3102</a>	\$101   \$504   \$0	\$26,200	\$319,000	\$345,200	120%	1980 & NA

[98-288 Kaonohi Street 3102](#) - MLS#: [202406773](#) - Experience convenient island living in this charming 1-bedroom, 1-bathroom condo nestled in the heart of Aiea. This cozy residence offers a comfortable living space with ocean views. The open floor plan maximizes space and natural light, creating a welcoming atmosphere throughout. Enjoy preparing meals in the comfort of your home, then relax by soaking in the views. The bedroom provides a peaceful retreat, while the bathroom offers both style and convenience. With its convenient location near shopping, dining, and transportation options, this condo is the perfect opportunity to embrace the relaxed lifestyle of Aiea. Don't miss out - schedule a showing today and make this your island oasis! **Region:** Pearl City **Neighborhood:** Pearlridge **Condition:** Above Average **Parking:** Assigned, Covered - 1 **Total Parking:** 1 **View:** City, Ocean **Frontage:** Pool: **Zoning:** 12 - A-2 Medium Density Apartme **Sale Conditions:** None  
**Schools:** , , \* [Request Showing](#), [Photos](#), [History](#), [Maps](#), [Deed](#), [Watch List](#), [Tax Info](#)

DOM = Days on Market, Occ. = Occupancy, FL = Floor Number