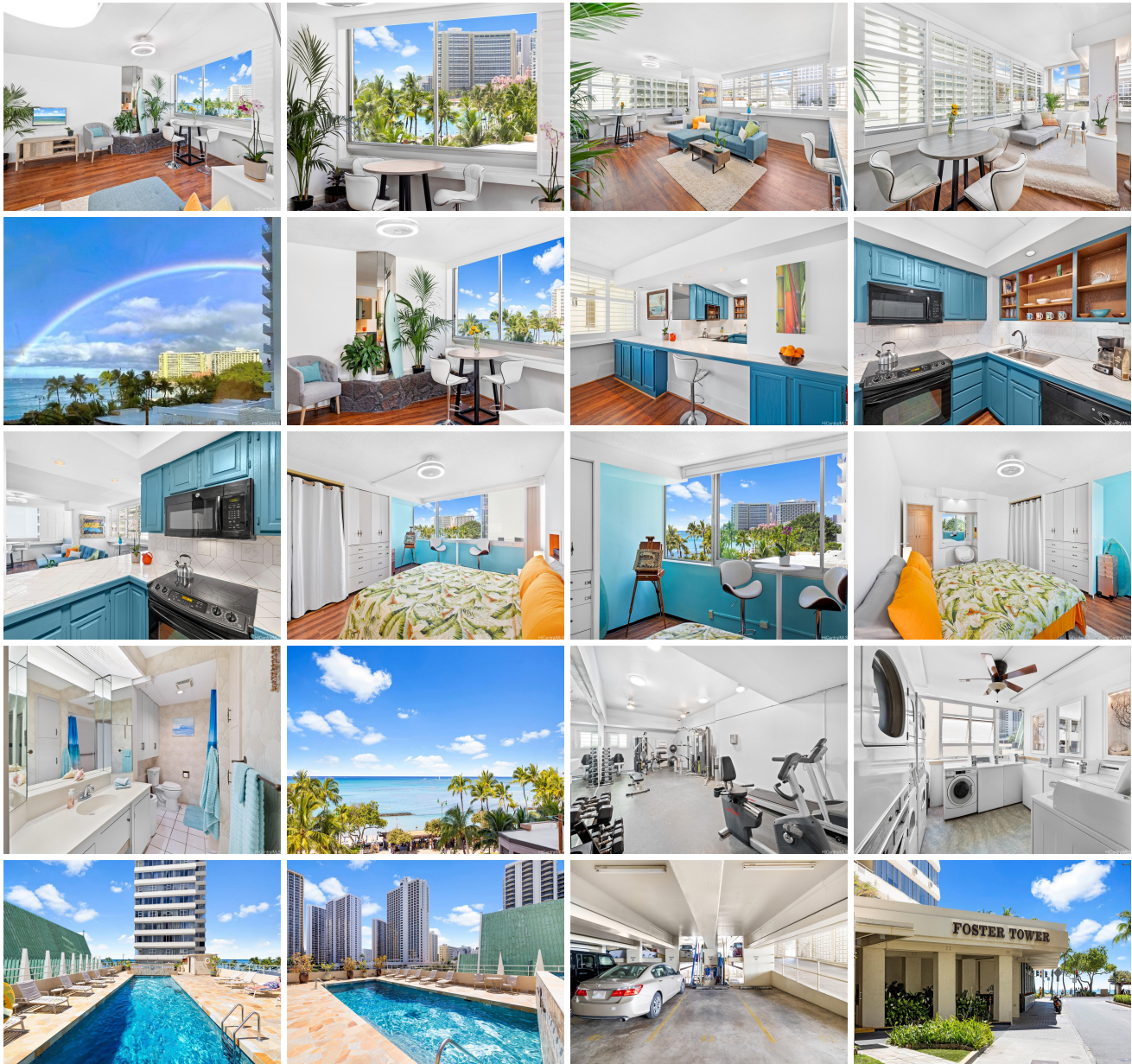


## **Foster Tower 2500 Kalakaua Avenue Unit 503, Honolulu 96815 \* Foster Tower \* \$275,000**

Beds: <b>1</b>	MLS#: <b><u>202406797</u>, LH</b>	Year Built: <b>1962</b>
Bath: <b>1/0</b>	Status: <b>Active</b>	Remodeled:
Living Sq. Ft.: <b>802</b>	List Date & DOM: <b>03-25-2024 &amp; 47</b>	Total Parking: <b>1</b>
Land Sq. Ft.: <b>0</b>	Condition: <b>Excellent</b>	<a href="#">Assessed Value</a>
Lanai Sq. Ft.: <b>0</b>	Frontage:	Building: <b>\$829,000</b>
Sq. Ft. Other: <b>0</b>	Tax/Year: <b>\$205/2024</b>	Land: <b>\$35,600</b>
Total Sq. Ft. <b>802</b>	Neighborhood: <b>Waikiki</b>	Total: <b>\$864,600</b>
Maint./Assoc. <b>\$1,318 / \$0</b>	<a href="#">Flood Zone</a> : <b>Zone V - Tool</b>	Stories / CPR: <b>21+ / No</b>
Parking: <b>Assigned, Covered - 1, Guest</b>	Frontage:	
<a href="#">Zoning</a> : <b>X6 - Resort Mixed Use Precinct</b>	View: <b>City, Ocean</b>	

**Public Remarks:** Experience the essence of coastal living at Waikiki Beach within the prestigious Foster Tower. This impeccably maintained, spacious 1-bedroom, 1-bathroom residence offers sweeping views of the Pacific Ocean, allowing you to enjoy breathtaking sunsets and the soothing rhythm of the waves from the comfort of home. Step inside to discover a space adorned with modern elegance, featuring a generous layout and tasteful renovations. Foster Tower is renowned for its luxurious amenities, including a saltwater pool, inviting hot tub, sauna, well-appointed gym, 24/7 security, and a dedicated resident manager. Plus, enjoy the convenience of your own private parking space complete with a custom-built surfboard rack. Small dog owners rejoice, as two pets are warmly welcomed. This condo presents an exceptional opportunity for rental income, with the flexibility of a 30-day minimum lease. Embrace the tranquil allure of coastal living while immersing yourself in the vibrant atmosphere of Waikiki – all within the serene confines of your very own private retreat. **Sale Conditions:** None

**Schools:** [Jefferson](#), [Washington](#), [Kaimuki](#) \* [Request Showing](#), [Photos](#), [History](#), [Maps](#), [Deed](#), [Watch List](#), [Tax Info](#)





Address	Price	Bd & Bth	Living / Avg.	Land   Avg.	Lanai	Occ.	FL	DOM
<a href="#">2500 Kalakaua Avenue 503</a>	<b>\$275,000 LH</b>	1 & 1/0	802   \$343	0   \$inf	0	68%	5	47

Address	Tax   Maint.   Ass.	Assessed Land	Assessed Building	Assessed Total	Ratio	Year & Remodeled
<a href="#">2500 Kalakaua Avenue 503</a>	\$205   \$1,318   \$0	\$35,600	\$829,000	\$864,600	32%	1962 & NA

[2500 Kalakaua Avenue 503](#) - MLS#: [202406797](#) - Experience the essence of coastal living at Waikiki Beach within the prestigious Foster Tower. This impeccably maintained, spacious 1-bedroom, 1-bathroom residence offers sweeping views of the Pacific Ocean, allowing you to enjoy breathtaking sunsets and the soothing rhythm of the waves from the comfort of home. Step inside to discover a space adorned with modern elegance, featuring a generous layout and tasteful renovations. Foster Tower is renowned for its luxurious amenities, including a saltwater pool, inviting hot tub, sauna, well-appointed gym, 24/7 security, and a dedicated resident manager. Plus, enjoy the convenience of your own private parking space complete with a custom-built surfboard rack. Small dog owners rejoice, as two pets are warmly welcomed. This condo presents an exceptional opportunity for rental income, with the flexibility of a 30-day minimum lease. Embrace the tranquil allure of coastal living while immersing yourself in the vibrant atmosphere of Waikiki – all within the serene confines of your very own private retreat. **Region:** Metro **Neighborhood:** Waikiki **Condition:** Excellent **Parking:** Assigned, Covered - 1, Guest **Total Parking:** 1 **View:** City, Ocean **Frontage:** **Pool:** **Zoning:** X6 - Resort Mixed Use Precinct **Sale Conditions:** None **Schools:** [Jefferson](#), [Washington](#), [Kaimuki](#) \* [Request Showing](#), [Photos](#), [History](#), [Maps](#), [Deed](#), [Watch List](#), [Tax Info](#)

DOM = Days on Market, Occ. = Occupancy, FL = Floor Number