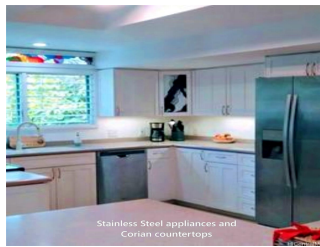


## 322 Iliwahi Loop, Kailua 96734 \* \* \$1,895,000

Sold Price: \$1,885,000	Sold Date: 05-14-2024	Sold Ratio: 99%
Beds: <b>8</b>	MLS#: <b>202406841, FS</b>	Year Built: <b>1960</b>
Bath: <b>4/0</b>	Status: <b>Sold</b>	Remodeled: <b>1990</b>
Living Sq. Ft.: <b>4,235</b>	List Date & DOM: <b>03-23-2024 &amp; 7</b>	Total Parking: <b>6</b>
Land Sq. Ft.: <b>7,809</b>	Condition: <b>Above Average</b>	<a href="#">Assessed Value</a>
Lanai Sq. Ft.: <b>0</b>	Frontage:	Building: <b>\$593,900</b>
Sq. Ft. Other: <b>0</b>	Tax/Year: <b>\$417/2024</b>	Land: <b>\$956,900</b>
Total Sq. Ft. <b>4,235</b>	Neighborhood: <b>Kalaheo Hillside</b>	Total: <b>\$1,550,800</b>
Maint./Assoc. <b>\$0 / \$0</b>	<a href="#">Flood Zone</a> : <b>Zone X - Tool</b>	Stories / CPR: <b>Two / Yes</b>
Parking: <b>3 Car+, Driveway</b>	Frontage:	
<a href="#">Zoning</a> : <b>03 - R10 - Residential District</b>	View: <b>Mountain</b>	

**Public Remarks:** Exceptional Income Potential and/or Multi-Generational Living with so many options! Live in either 2, 3, 4 or even 5 bedrooms/3 bath and still have several separate spaces for extended family, friends, or income. Delightfully located w/in 5 minutes of North Kailua Beach, enjoy miles of white sand walks on the beach while taking in the gorgeous sunrises and epic surfing! Also, one-block walk to Safeway, shops, restaurants, and the back gate of Marine Corp Base Hawaii and H3 access are less than a mile away. Minutes to Kailua Town and World Renowned Lanikai Beach. Nestled in the coveted Kalaheo Hillside neighborhood on a level lot on a quaint street. The private oasis in the gated backyard includes an organically shaped pool with waterfall, accentuated by a mosaic turtle at the bottom of the blue lagoon pool. Surround yourself with lush tropics with orange, mango, avocado and plumeria trees. Peak-a-boo ocean & mountain views from cool top floor unit enjoying refreshing trade winds. Major Upgrades completed in the last year include a New Roof, Flooring, Paint, Appliances, and new 80-gallon solar hot water heater. Proof of funds/approval letter prior to showing. The possibilities! **Sale Conditions:** None  
**Schools:** [Aikahi](#), [Kailua](#), [Kalaheo](#) \* [Request Showing](#), [Photos](#), [History](#), [Maps](#), [Deed](#), [Watch List](#), [Tax Info](#)



Address	Price	Bd & Bth	Living / Avg.	Land   Avg.	Lanai	Occ.	FL	DOM
<a href="#">322 Iliwahi Loop</a>	<a href="#">\$1,895,000</a>	8 & 4/0	4,235   \$447	7,809   \$243	0	0%	0	7

Address	Tax   Maint.   Ass.	Assessed Land	Assessed Building	Assessed Total	Ratio	Year & Remodeled
<a href="#">322 Iliwahi Loop</a>	\$417   \$0   \$0	\$956,900	\$593,900	\$1,550,800	122%	1960 & 1990

Address	Sold Price	Sold Date	Sold Ratio	Original Ratio	Sold Terms
<a href="#">322 Iliwahi Loop</a>	\$1,885,000	05-14-2024	99%	99%	Conventional

[322 Iliwahi Loop](#) - MLS#: [202406841](#) - Exceptional Income Potential and/or Multi-Generational Living with so many options! Live in either 2, 3, 4 or even 5 bedrooms/3 bath and still have several separate spaces for extended family, friends, or income. Delightfully located w/in 5 minutes of North Kailua Beach, enjoy miles of white sand walks on the beach while taking in the gorgeous sunrises and epic surfing! Also, one-block walk to Safeway, shops, restaurants, and the back gate of Marine Corp Base Hawaii and H3 access are less than a mile away. Minutes to Kailua Town and World Renowned Lanikai Beach. Nestled in the coveted Kalaheo Hillside neighborhood on a level lot on a quaint street. The private oasis in the gated backyard includes an organically shaped pool with waterfall, accentuated by a mosaic turtle at the bottom of the blue lagoon pool. Surround yourself with lush tropics with orange, mango, avocado and plumeria trees. Peak-a-boo ocean & mountain views from cool top floor unit enjoying refreshing trade winds. Major Upgrades completed in the last year include a New Roof, Flooring, Paint, Appliances, and new 80-gallon solar hot water heater. Proof of funds/approval letter prior to showing. The possibilities! **Region:** Kailua **Neighborhood:** Kalaheo Hillside **Condition:** Above Average **Parking:** 3 Car+, Driveway **Total Parking:** 6 **View:** Mountain **Frontage:** Pool: In Ground,Spa/HotTub **Zoning:** 03 - R10 - Residential District **Sale Conditions:** None **Schools:** [Aikahi](#), [Kailua](#), [Kalaheo](#) \* [Request Showing](#), [Photos](#), [History](#), [Maps](#), [Deed](#), [Watch List](#), [Tax Info](#)

DOM = Days on Market, Occ. = Occupancy, FL = Floor Number