

75 Poipu Drive, Honolulu 96825 * * \$4,400,000

Beds: **4**
Bath: **4/0**
Living Sq. Ft.: **3,145**
Land Sq. Ft.: **18,820**
Lanai Sq. Ft.: **2,304**
Sq. Ft. Other: **0**
Total Sq. Ft. **5,449**
Maint./Assoc. **\$0 / \$0**
Parking: **3 Car+, Driveway, Garage**

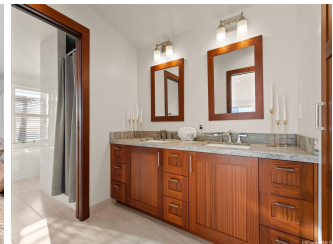
MLS#: **202406873, FS**
Status: **Active**
List Date & DOM: **03-22-2024 & 57**
Condition: **Excellent**
Frontage:
Tax/Year: **\$3,084/2023**
Neighborhood: **Koko Kai**
Flood Zone: **Zone D - Tool**
Frontage:

Year Built: **1970**
Remodeled: **2018**
Total Parking: **4**
Assessed Value
Building: **\$1,810,300**
Land: **\$2,085,600**
Total: **\$3,895,900**
Stories / CPR: **Two / No**

Zoning: **03 - R10 - Residential District**

View: **City, Coastline, Diamond Head, Mountain, Ocean, Sunset**

Public Remarks: Enjoy breathtaking panoramic Ocean, Coastline, Diamond Head, Mountain and Sunset views from this stately landmark Koko Kai residence sited on an oversized upslope lot. Features include a private primary suite with walk-in closet, large lanai and spa bath, all of which take full advantage of this view lot; dry bar with large wine refrigerator and walk-in pantry which flows to an eat-in kitchen with high-end appliances; pool, spa, BBQ pavilion, gas tiki torches, tropical landscaping and ample decking for large-scale or intimate poolside gatherings; ample parking with a 2-car garage and driveway parking that comfortably fits at least 3 more cars; estate-sized lot with ample room to expand the landscaping. This gracious home is truly the epitome of indoor-outdoor living with most rooms opening onto deep covered lanais and floor-to-ceiling picture windows and sliding glass doors that frame picturesque views. Convenient location within minutes to beaches, hiking, shopping and dining. Great value for this modern home in one of East Honolulu's desirable neighborhoods! **Sale Conditions:** None **Schools:** , , * [Request Showing](#), [Photos](#), [History](#), [Maps](#), [Deed](#), [Watch List](#), [Tax Info](#)



Address	Price	Bd & Bth	Living / Avg.	Land Avg.	Lanai	Occ.	FL	DOM
75 Poipu Drive	\$4,400,000	4 & 4/0	3,145 \$1,399	18,820 \$234	2,304	0%	0	57

Address	Tax Maint. Ass.	Assessed Land	Assessed Building	Assessed Total	Ratio	Year & Remodeled
75 Poipu Drive	\$3,084 \$0 \$0	\$2,085,600	\$1,810,300	\$3,895,900	113%	1970 & 2018

[75 Poipu Drive](#) - MLS#: [202406873](#) - Enjoy breathtaking panoramic Ocean, Coastline, Diamond Head, Mountain and Sunset views from this stately landmark Koko Kai residence sited on an oversized upslope lot. Features include a private primary suite with walk-in closet, large lanai and spa bath, all of which take full advantage of this view lot; dry bar with large wine refrigerator and walk-in pantry which flows to an eat-in kitchen with high-end appliances; pool, spa, BBQ pavilion, gas tiki torches, tropical landscaping and ample decking for large-scale or intimate poolside gatherings; ample parking with a 2-car garage and driveway parking that comfortably fits at least 3 more cars; estate-sized lot with ample room to expand the landscaping. This gracious home is truly the epitome of indoor-outdoor living with most rooms opening onto deep covered lanais and floor-to-ceiling picture windows and sliding glass doors that frame picturesque views. Convenient location within minutes to beaches, hiking, shopping and dining. Great value for this modern home in one of East Honolulu's desirable neighborhoods! **Region:** Hawaii Kai **Neighborhood:** Koko Kai **Condition:** Excellent **Parking:** 3 Car+, Driveway, Garage **Total Parking:** 4 **View:** City, Coastline, Diamond Head, Mountain, Ocean, Sunset **Frontage:** Pool: In Ground, Spa/HotTub, Tile **Zoning:** 03 - R10 - Residential District **Sale Conditions:** None **Schools:** , , * [Request Showing](#), [Photos](#), [History](#), [Maps](#), [Deed](#), [Watch List](#), [Tax Info](#)

DOM = Days on Market, Occ. = Occupancy, FL = Floor Number