

## **Executive Centre 1088 Bishop Street Unit 3612, Honolulu 96813 \* Executive Centre \***

**\$388,000**

Beds: **1**

MLS#: **202406952, FS**

Year Built: **1984**

Bath: **1/0**

Status: **Active Under Contract**

Remodeled:

Living Sq. Ft.: **525**

List Date & DOM: **03-24-2024 & 18**

Total Parking: **2**

Land Sq. Ft.: **58,370**

Condition: **Excellent**

[Assessed Value](#)

Lanai Sq. Ft.: **0**

Frontage: **Other**

Building: **\$262,400**

Sq. Ft. Other: **0**

Tax/Year: **\$87/2023**

Land: **\$35,800**

Total Sq. Ft. **525**

Neighborhood: **Downtown**

Total: **\$298,200**

Maint./Assoc. **\$826 / \$0**

[Flood Zone](#): **Zone X - Tool**

Stories / CPR: **21+ / No**

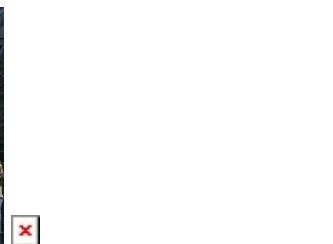
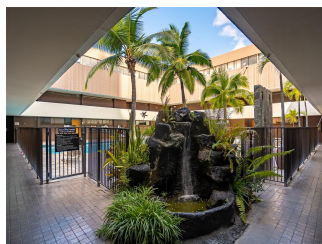
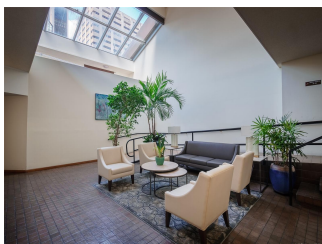
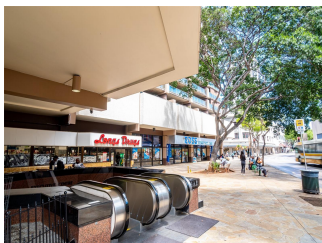
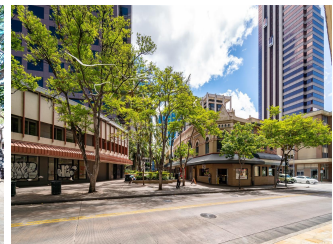
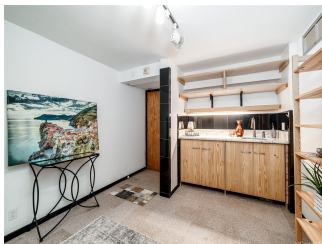
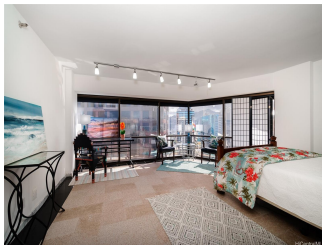
Parking: **Assigned, Covered - 2, Guest**

Frontage: **Other**

[Zoning](#): **34 - BMX-4 Central Business Mix**

View: **City, Mountain, Sunrise**

**Public Remarks:** 2 COVERED PARKING STALLS! If you are looking for a convenient and comfortable place to live or work in the heart of Honolulu, look no further than this spacious 1 bedroom 1 bathroom unit in a mixed-use building. Which means you can live in it, use it as office space, or rent it through the Aqua Aston Hotel pool. This unit offers two covered parking stalls, a secure entrance with 24-hour security, and access to amenities such as a pool, a community laundry, and a concierge service. You will love the locations, as it is close to Ala Moana Shopping Center, HPU and the financial district. The maintenance fee \$682.77 plus capital reserve 143.54 = 826.31 and covers water, sewer, cable TV, and internet. Don't miss this opportunity to own a place of paradise in downtown Honolulu. **Sale Conditions:** None **Schools:** [Royal](#), [Keelikolani](#), [Mckinley](#) \* [Request Showing](#), [Photos](#), [History](#), [Maps](#), [Deed](#), [Watch List](#), [Tax Info](#)



Address	Price	Bd & Bth	Living / Avg.	Land   Avg.	Lanai	Occ.	FL	DOM
<a href="#">1088 Bishop Street 3612</a>	<a href="#">\$388,000</a>	1 & 1/0	525   \$739	58,370   \$7	0	20%	36	18

Address	Tax   Maint.   Ass.	Assessed Land	Assessed Building	Assessed Total	Ratio	Year & Remodeled
<a href="#">1088 Bishop Street 3612</a>	\$87   \$826   \$0	\$35,800	\$262,400	\$298,200	130%	1984 & NA

[1088 Bishop Street 3612](#) - MLS#: [202406952](#) - 2 COVERED PARKING STALLS! If you are looking for a convenient and comfortable place to live or work in the heart of Honolulu, look no further than this spacious 1 bedroom 1 bathroom unit in a mixed-use building. Which means you can live in it, use it as office space, or rent it through the Aqua Aston Hotel pool. This unit offers two covered parking stalls, a secure entrance with 24-hour security, and access to amenities such as a pool, a community laundry, and a concierge service. You will love the locations, as it is close to Ala Moana Shopping Center, HPU and the financial district. The maintenance fee \$682.77 plus capital reserve 143.54 = 826.31 and covers water, sewer, cable TV, and internet. Don't miss this opportunity to own a place of paradise in downtown Honolulu. **Region:** Metro **Neighborhood:** Downtown **Condition:** Excellent **Parking:** Assigned, Covered - 2, Guest **Total Parking:** 2 **View:** City, Mountain, Sunrise **Frontage:** Other **Pool:** **Zoning:** 34 - BMX-4 Central Business Mix **Sale Conditions:** None **Schools:** [Royal](#), [Keelikolani](#), [Mckinley](#) \* [Request Showing](#), [Photos](#), [History](#), [Maps](#), [Deed](#), [Watch List](#), [Tax Info](#)

DOM = Days on Market, Occ. = Occupancy, FL = Floor Number