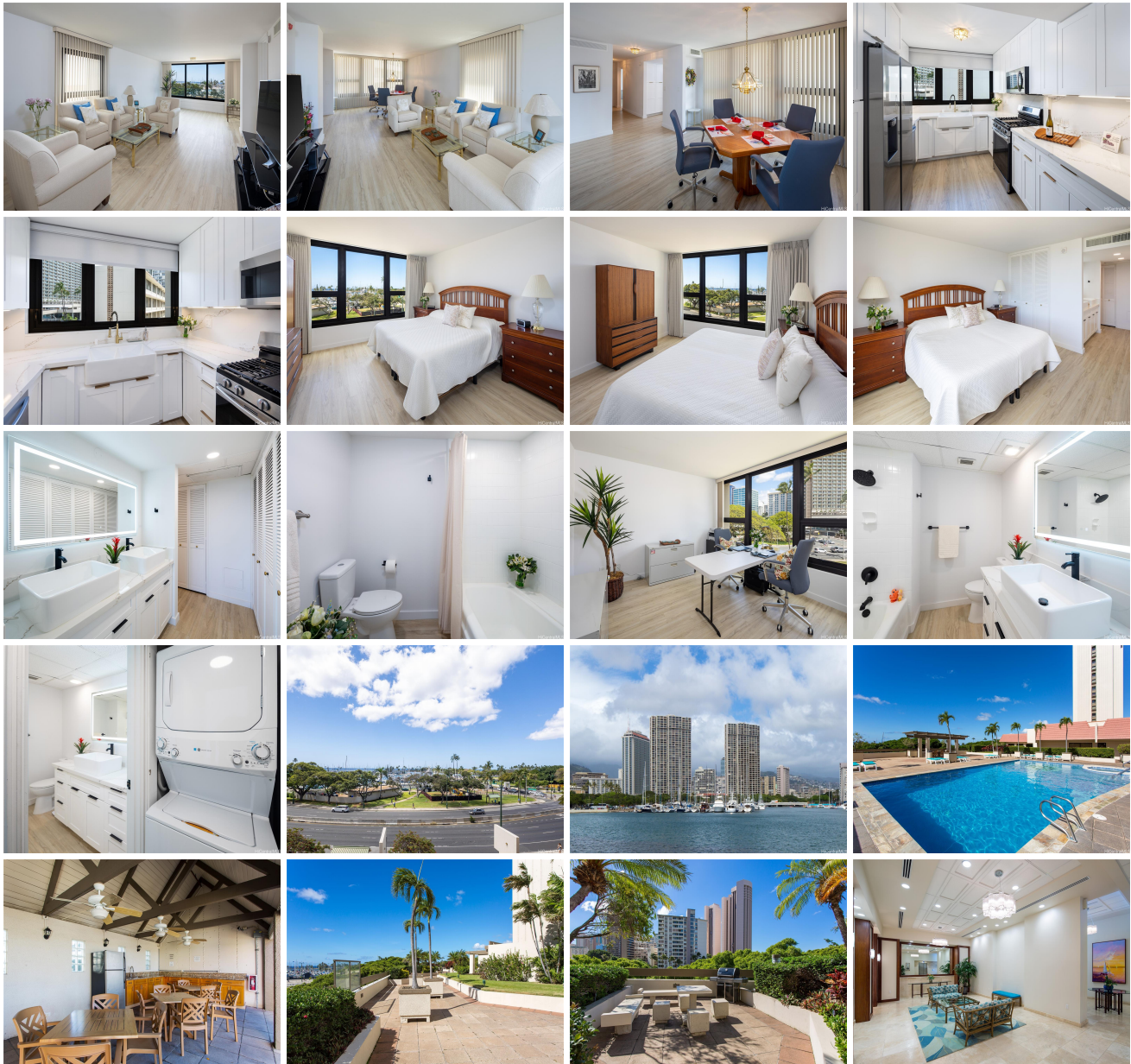


Yacht Harbor Towers 1600 Ala Moana Boulevard Unit 500, Honolulu 96815 * Yacht Harbor Towers * \$995,000 * Originally \$1,080,000

Beds: 2	MLS#: <u>202406986</u>, FS	Year Built: 1973
Bath: 2/0	Status: Active	Remodeled:
Living Sq. Ft.: 1,595	List Date & DOM: 03-25-2024 & 56	Total Parking: 1
Land Sq. Ft.: 0	Condition: Excellent	Assessed Value
Lanai Sq. Ft.: 0	Frontage:	Building: \$863,800
Sq. Ft. Other: 0	Tax/Year: \$268/2024	Land: \$54,200
Total Sq. Ft. 1,595	Neighborhood: Ala Moana	Total: \$918,000
Maint./Assoc. \$1,255 / \$0	Flood Zone : Zone AE - Tool	Stories / CPR: 21+ / No
Parking: Covered - 1, Guest	Frontage:	
Zoning : 12 - A-2 Medium Density Apartme	View: Marina/Canal, Ocean, Sunset	

Public Remarks: Your search ends here - welcome to your stunningly renovated haven in the picturesque Yacht Harbor Towers. Situated in close proximity to Ala Moana Center, Ala Moana Beach Park, Magic Island, Ala Wai Yacht Harbor, minutes away from the renowned Waikiki beaches and Downtown Honolulu, the vibrant Kaka'ako district, this location epitomizes island living at its finest. Recently renovated in 2022, this unit boasts luxurious features including luxury vinyl plank flooring, LED vanity mirrors, and new appliances paired with fresh cabinets, sinks, countertops, exquisite light fixtures and impeccable recessed lighting. Experience peace of mind knowing that your monthly fee covers major utilities such as central air conditioning, electricity, gas, hot water, water/sewer, common expenses, cable TV and high speed internet. No special assessment as it's been paid off. Yacht Harbor Towers offers an array of exceptional amenities including a tennis court, pool, hot tub, recreation deck, and barbecue area, perfect for entertaining friends and family. Don't miss out - seize the opportunity to own your slice of Hawaiian paradise today! **Sale Conditions:** None **Schools:** [Ala Wai](#), [Washington](#), [Kaimuki](#) * [Request Showing](#), [Photos](#), [History](#), [Maps](#), [Deed](#), [Watch List](#), [Tax Info](#)



Address	Price	Bd & Bth	Living / Avg.	Land Avg.	Lanai	Occ.	FL	DOM
1600 Ala Moana Boulevard 500	\$995,000	2 & 2/0	1,595 \$624	0 \$inf	0	51%	5	56

Address	Tax Maint. Ass.	Assessed Land	Assessed Building	Assessed Total	Ratio	Year & Remodeled
1600 Ala Moana Boulevard 500	\$268 \$1,255 \$0	\$54,200	\$863,800	\$918,000	108%	1973 & NA

[1600 Ala Moana Boulevard 500](#) - MLS#: [202406986](#) - Original price was \$1,080,000 - Your search ends here - welcome to your stunningly renovated haven in the picturesque Yacht Harbor Towers. Situated in close proximity to Ala Moana Center, Ala Moana Beach Park, Magic Island, Ala Wai Yacht Harbor, minutes away from the renowned Waikiki beaches and Downtown Honolulu, the vibrant Kaka'ako district, this location epitomizes island living at its finest. Recently renovated in 2022, this unit boasts luxurious features including luxury vinyl plank flooring, LED vanity mirrors, and new appliances paired with fresh cabinets, sinks, countertops, exquisite light fixtures and impeccable recessed lighting. Experience peace of mind knowing that your monthly fee covers major utilities such as central air conditioning, electricity, gas, hot water, water/sewer, common expenses, cable TV and high speed internet. No special assessment as it's been paid off. Yacht Harbor Towers offers an array of exceptional amenities including a tennis court, pool, hot tub, recreation deck, and barbecue area, perfect for entertaining friends and family. Don't miss out - seize the opportunity to own your slice of Hawaiian paradise today! **Region:** Metro **Neighborhood:** Ala Moana **Condition:** Excellent **Parking:** Covered - 1, Guest **Total Parking:** 1 **View:** Marina/Canal, Ocean, Sunset **Frontage:** **Pool:** **Zoning:** 12 - A-2 Medium Density Apartme **Sale Conditions:** None **Schools:** [Ala Wai](#), [Washington](#), [Kaimuki](#) * [Request Showing](#), [Photos](#), [History](#), [Maps](#), [Deed](#), [Watch List](#), [Tax Info](#)

DOM = Days on Market, Occ. = Occupancy, FL = Floor Number