

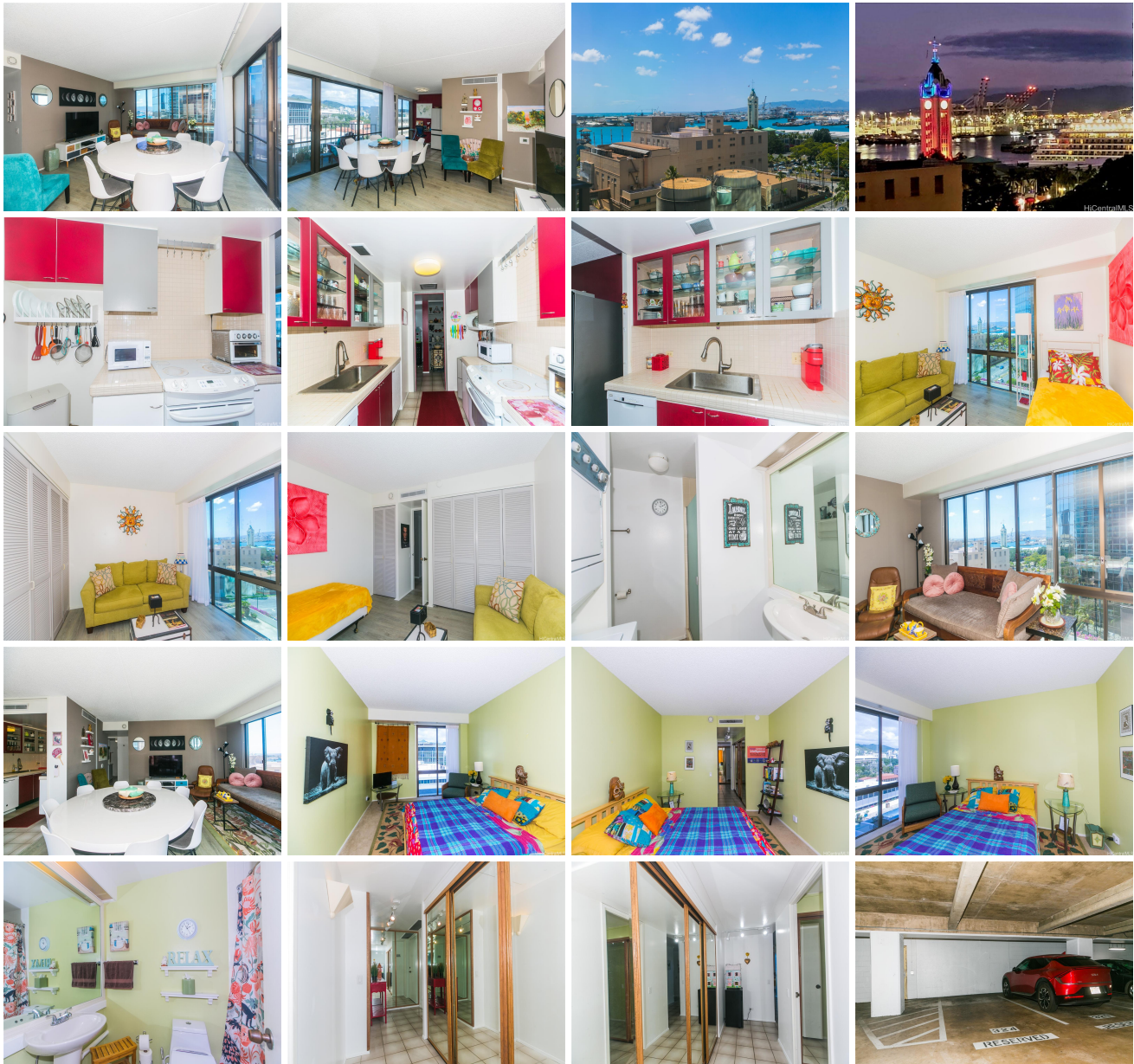
## Harbor Square 700 Richards Street Unit 1104, Honolulu 96813 \* Harbor Square \* \$650,000

Beds: <b>2</b>	MLS#: <b>202407058, FS</b>	Year Built: <b>1971</b>
Bath: <b>2/0</b>	Status: <b>Active</b>	Remodeled: <b>2019</b>
Living Sq. Ft.: <b>1,014</b>	List Date & DOM: <b>03-26-2024 &amp; 46</b>	Total Parking: <b>1</b>
Land Sq. Ft.: <b>0</b>	Condition: <b>Above Average</b>	<a href="#">Assessed Value</a>
Lanai Sq. Ft.: <b>86</b>	Frontage: <b>Other</b>	Building: <b>\$596,400</b>
Sq. Ft. Other: <b>0</b>	Tax/Year: <b>\$30/2023</b>	Land: <b>\$75,700</b>
Total Sq. Ft. <b>1,100</b>	Neighborhood: <b>Downtown</b>	Total: <b>\$672,100</b>
Maint./Assoc. <b>\$1,609 / \$0</b>	<a href="#">Flood Zone</a> : <b>Zone X - Tool</b>	Stories / CPR: <b>21+ / No</b>
Parking: <b>Assigned, Covered - 1</b>	Frontage: <b>Other</b>	

**Zoning: 34 - BMX-4 Central Business Mix**

View: **City, Coastline, Mountain, Ocean, Sunset**

**Public Remarks:** Beautiful corner unit with harbor, ocean, and mountain views! Cool Hawaiian breezes throughout the unit. Air conditioning, electricity, basic cable and internet are all included in your maintenance fee. Flooring include Ceramic tile, upscale laminate and carpeted bedroom. Separate private bedrooms with one ensuite and extra closet space for storage. Large family room with table seating up to 10 or more. Window treatments, kitchen upgrades in 2023 with new backsplash and sink. This location is in the heart of Downtown Honolulu close to freeway access, Kakaako, Whole Foods, Aloha Tower/HPU College, Chinatown, Waikiki and a direct ride to Honolulu International Airport by car or public bus. Also close to Queens Hospital, Straub Hospital, Kaiser Hospital, Iolani Palace and State Capital Building. Enjoy the convenient location near so many restaurants, shops and more! **Sale Conditions:** None **Schools:** [Royal](#), [Keelikolani](#), [Mckinley](#) \* [Request Showing](#), [Photos](#), [History](#), [Maps](#), [Deed](#), [Watch List](#), [Tax Info](#)





Address	Price	Bd & Bth	Living / Avg.	Land   Avg.	Lanai	Occ.	FL	DOM
<a href="#">700 Richards Street 1104</a>	<a href="#">\$650,000</a>	2 & 2/0	1,014   \$641	0   \$inf	86	53%	11	46

Address	Tax   Maint.   Ass.	Assessed Land	Assessed Building	Assessed Total	Ratio	Year & Remodeled
<a href="#">700 Richards Street 1104</a>	\$30   \$1,609   \$0	\$75,700	\$596,400	\$672,100	97%	1971 & 2019

[700 Richards Street 1104](#) - MLS#: [202407058](#) - Beautiful corner unit with harbor, ocean, and mountain views! Cool Hawaiian breezes throughout the unit. Air conditioning, electricity, basic cable and internet are all included in your maintenance fee. Flooring include Ceramic tile, upscale laminate and carpeted bedroom. Separate private bedrooms with one ensuite and extra closet space for storage. Large family room with table seating up to 10 or more. Window treatments, kitchen upgrades in 2023 with new backsplash and sink. This location is in the heart of Downtown Honolulu close to freeway access, Kakaako, Whole Foods, Aloha Tower/HPU College, Chinatown, Waikiki and a direct ride to Honolulu International Airport by car or public bus. Also close to Queens Hospital, Straub Hospital, Kaiser Hospital, Iolani Palace and State Capital Building. Enjoy the convenient location near so many restaurants, shops and more! **Region:** Metro **Neighborhood:** Downtown **Condition:** Above Average **Parking:** Assigned, Covered - 1 **Total Parking:** 1 **View:** City, Coastline, Mountain, Ocean, Sunset **Frontage:** Other **Pool:** **Zoning:** 34 - BMX-4 Central Business Mix **Sale Conditions:** None **Schools:** [Royal](#), [Keelikolani](#), [Mckinley](#) \* [Request Showing](#), [Photos](#), [History](#), [Maps](#), [Deed](#), [Watch List](#), [Tax Info](#)

DOM = Days on Market, Occ. = Occupancy, FL = Floor Number