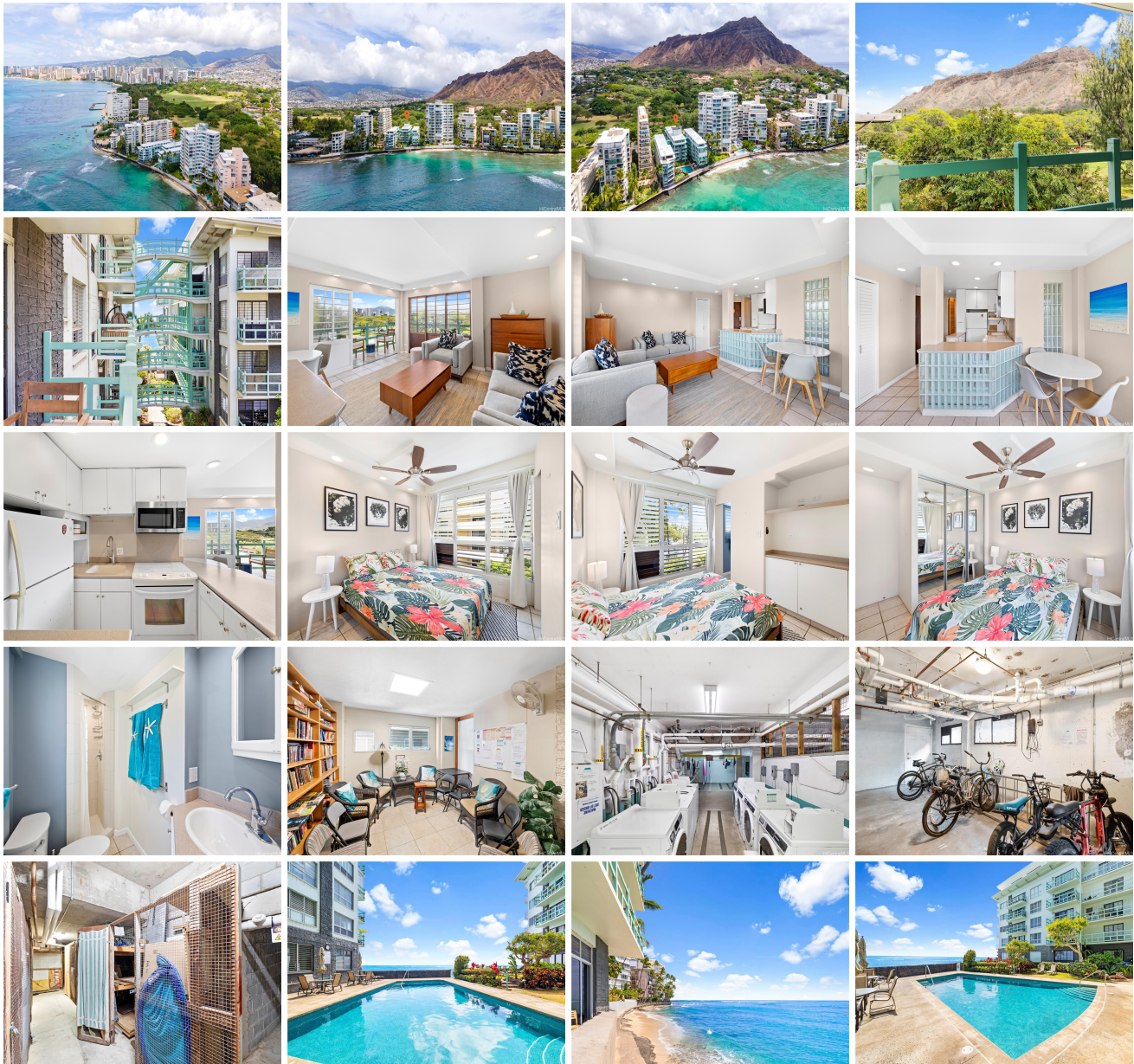


## **Diamond Head Ambassador B 2957 Kalakaua Avenue Unit 407, Honolulu 96815 \* Diamond**

**Head Ambassador B \* \$575,000**

Beds: <b>1</b>	MLS#: <b><u>202407154</u>, FS</b>	Year Built: <b>1959</b>
Bath: <b>1/0</b>	Status: <b>Active Under Contract</b>	Remodeled:
Living Sq. Ft.: <b>445</b>	List Date & DOM: <b>04-06-2024 &amp; 30</b>	Total Parking: <b>0</b>
Land Sq. Ft.: <b>0</b>	Condition: <b>Average</b>	<a href="#">Assessed Value</a>
Lanai Sq. Ft.: <b>162</b>	Frontage: <b>Ocean</b>	Building: <b>\$336,800</b>
Sq. Ft. Other: <b>0</b>	Tax/Year: <b>\$100/2023</b>	Land: <b>\$144,900</b>
Total Sq. Ft. <b>607</b>	Neighborhood: <b>Diamond Head</b>	Total: <b>\$481,700</b>
Maint./Assoc. <b>\$827 / \$0</b>	<a href="#">Flood Zone</a> : <b>Zone VE,Zo - Tool</b>	Stories / CPR: <b>4-7 / No</b>
Parking: <b>None</b>	Frontage: <b>Ocean</b>	
<a href="#">Zoning</a> : <b>12 - A-2 Medium Density Apartme</b>	View: <b>City, Diamond Head, Mountain, Ocean</b>	

**Public Remarks:** Welcome to the iconic Diamond Head Ambassador, a co-op consisting of three classical Japanese-style buildings connected by gracefully arched bridges on each level. Our 1 bed / 1 bath corner end unit opens up to a large covered lanai with unobstructed Diamond Head Crater views, as well as the amazing Kapiolani Park and even a peek-a-boo ocean view. Featuring top location, an abundance of cultural activities to choose from, like beachfront restaurants, Honolulu zoo, aquarium, the Outrigger Canoe Club & Kamaina Beach, just to name a few. Amenities include a salt water pool with direct ocean access, community laundry, library, secured assigned storage & a resourceful manager on site. Get excited to call the Diamond Head Ambassador your new forever home. Parking is not conveyed, but can be rented on a first come basis. Sorry, no pets allowed here. **Sale Conditions:** None **Schools:** [Waikiki](#), [Kaimuki](#), [Kalani](#) \* [Request Showing](#), [Photos](#), [History](#), [Maps](#), [Deed](#), [Watch List](#), [Tax Info](#)





Address	Price	Bd & Bth	Living / Avg.	Land   Avg.	Lanai	Occ.	FL	DOM
<a href="#">2957 Kalakaua Avenue 407</a>	<a href="#">\$575,000</a>	1 & 1/0	445   \$1,292	0   \$inf	162	31%	4	30

Address	Tax   Maint.   Ass.	Assessed Land	Assessed Building	Assessed Total	Ratio	Year & Remodeled
<a href="#">2957 Kalakaua Avenue 407</a>	\$100   \$827   \$0	\$144,900	\$336,800	\$481,700	119%	1959 & NA

[2957 Kalakaua Avenue 407](#) - MLS#: [202407154](#) - Welcome to the iconic Diamond Head Ambassador, a co-op consisting of three classical Japanese-style buildings connected by gracefully arched bridges on each level. Our 1 bed / 1 bath corner end unit opens up to a large covered lanai with unobstructed Diamond Head Crater views, as well as the amazing Kapiolani Park and even a peek-a-boo ocean view. Featuring top location, an abundance of cultural activities to choose from, like beachfront restaurants, Honolulu zoo, aquarium, the Outrigger Canoe Club & Kamaina Beach, just to name a few. Amenities include a salt water pool with direct ocean access, community laundry, library, secured assigned storage & a resourceful manager on site. Get excited to call the Diamond Head Ambassador your new forever home. Parking is not conveyed, but can be rented on a first come basis. Sorry, no pets allowed here. **Region:** Diamond Head **Neighborhood:** Diamond Head **Condition:** Average **Parking:** None **Total Parking:** 0 **View:** City, Diamond Head, Mountain, Ocean **Frontage:** Ocean **Pool:** **Zoning:** 12 - A-2 Medium Density Apartme **Sale Conditions:** None **Schools:** [Waikiki](#), [Kaimuki](#), [Kalani](#) \* [Request Showing](#), [Photos](#), [History](#), [Maps](#), [Deed](#), [Watch List](#), [Tax Info](#)

DOM = Days on Market, Occ. = Occupancy, FL = Floor Number