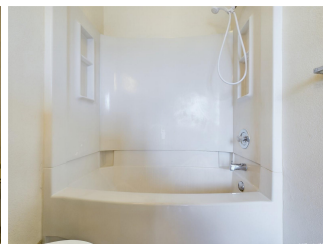
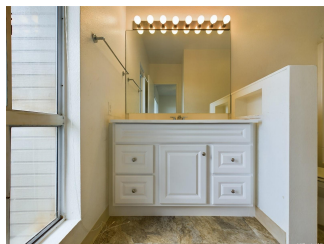


Palm Court 1A 91-989 Puamaeole Street Unit 1U, Ewa Beach 96706 * Palm Court 1A *

\$489,000 * Originally \$510,000

Beds: 2	MLS#: <u>202407233</u>, FS	Year Built: 1991
Bath: 2/0	Status: Active	Remodeled: 2018
Living Sq. Ft.: 810	List Date & DOM: 04-10-2024 & 37	Total Parking: 2
Land Sq. Ft.: 47,132	Condition: Average, Fair	Assessed Value
Lanai Sq. Ft.: 0	Frontage:	Building: \$311,400
Sq. Ft. Other: 0	Tax/Year: \$157/2023	Land: \$225,800
Total Sq. Ft. 810	Neighborhood: Ewa Gen Soda Creek	Total: \$537,200
Maint./Assoc. \$516 / \$38	Flood Zone : Zone D - Tool	Stories / CPR: Two / No
Parking: Assigned, Covered - 1, Open - 1, Street	Frontage:	
Zoning : 11 - A-1 Low Density Apartment	View: None	

Public Remarks: PRICED TO SELL! Your dream condo awaits, in the heart of Ewa Beach! Palm Court is a residential community that ensures peace of mind with its gated entrance. This condo features two spacious bedrooms, each with its own en-suite bathroom, offering you and your loved ones the utmost comfort and convenience. Stay on top of your laundry with the in-unit washer and dryer. Enjoy the convenience of having AC units in each room, ensuring that you stay cool and comfortable year-round. This condo also offers spacious closets, providing ample storage for all your belongings. Leave your parking worries behind; this condo includes two designated parking spaces. The community recreation center features a beautiful pool and cabanas that are fully equipped with refrigerators, full-sized sinks, and gas-operated grills, ensuring that your poolside experience is nothing short of extraordinary. With ample seating options, you can entertain and create memories that will last a lifetime. Take advantage of living near beautiful golf courses and pristine beaches. Don't delay, schedule a showing to secure your dream condo in Ewa Beach! **Sale Conditions:** None **Schools:** , , * [Request Showing](#), [Photos](#), [History](#), [Maps](#), [Deed](#), [Watch List](#), [Tax Info](#)





Address	Price	Bd & Bth	Living / Avg.	Land Avg.	Lanai	Occ.	FL	DOM
91-989 Puamaeole Street 1U	\$489,000	2 & 2/0	810 \$604	47,132 \$10	0	59%	2	37

Address	Tax Maint. Ass.	Assessed Land	Assessed Building	Assessed Total	Ratio	Year & Remodeled
91-989 Puamaeole Street 1U	\$157 \$516 \$38	\$225,800	\$311,400	\$537,200	91%	1991 & 2018

[91-989 Puamaeole Street 1U](#) - MLS#: [202407233](#) - Original price was \$510,000 - PRICED TO SELL! Your dream condo awaits, in the heart of Ewa Beach! Palm Court is a residential community that ensures peace of mind with its gated entrance. This condo features two spacious bedrooms, each with its own en-suite bathroom, offering you and your loved ones the utmost comfort and convenience. Stay on top of your laundry with the in-unit washer and dryer. Enjoy the convenience of having AC units in each room, ensuring that you stay cool and comfortable year-round. This condo also offers spacious closets, providing ample storage for all your belongings. Leave your parking worries behind; this condo includes two designated parking spaces. The community recreation center features a beautiful pool and cabanas that are fully equipped with refrigerators, full-sized sinks, and gas-operated grills, ensuring that your poolside experience is nothing short of extraordinary. With ample seating options, you can entertain and create memories that will last a lifetime. Take advantage of living near beautiful golf courses and pristine beaches. Don't delay, schedule a showing to secure your dream condo in Ewa Beach! **Region:** Ewa Plain **Neighborhood:** Ewa Gen Soda Creek **Condition:** Average, Fair **Parking:** Assigned, Covered - 1, Open - 1, Street **Total Parking:** 2 **View:** None **Frontage:** Pool: **Zoning:** 11 - A-1 Low Density Apartment **Sale Conditions:** None **Schools:** , , * [Request Showing](#), [Photos](#), [History](#), [Maps](#), [Deed](#), [Watch List](#), [Tax Info](#)

DOM = Days on Market, Occ. = Occupancy, FL = Floor Number