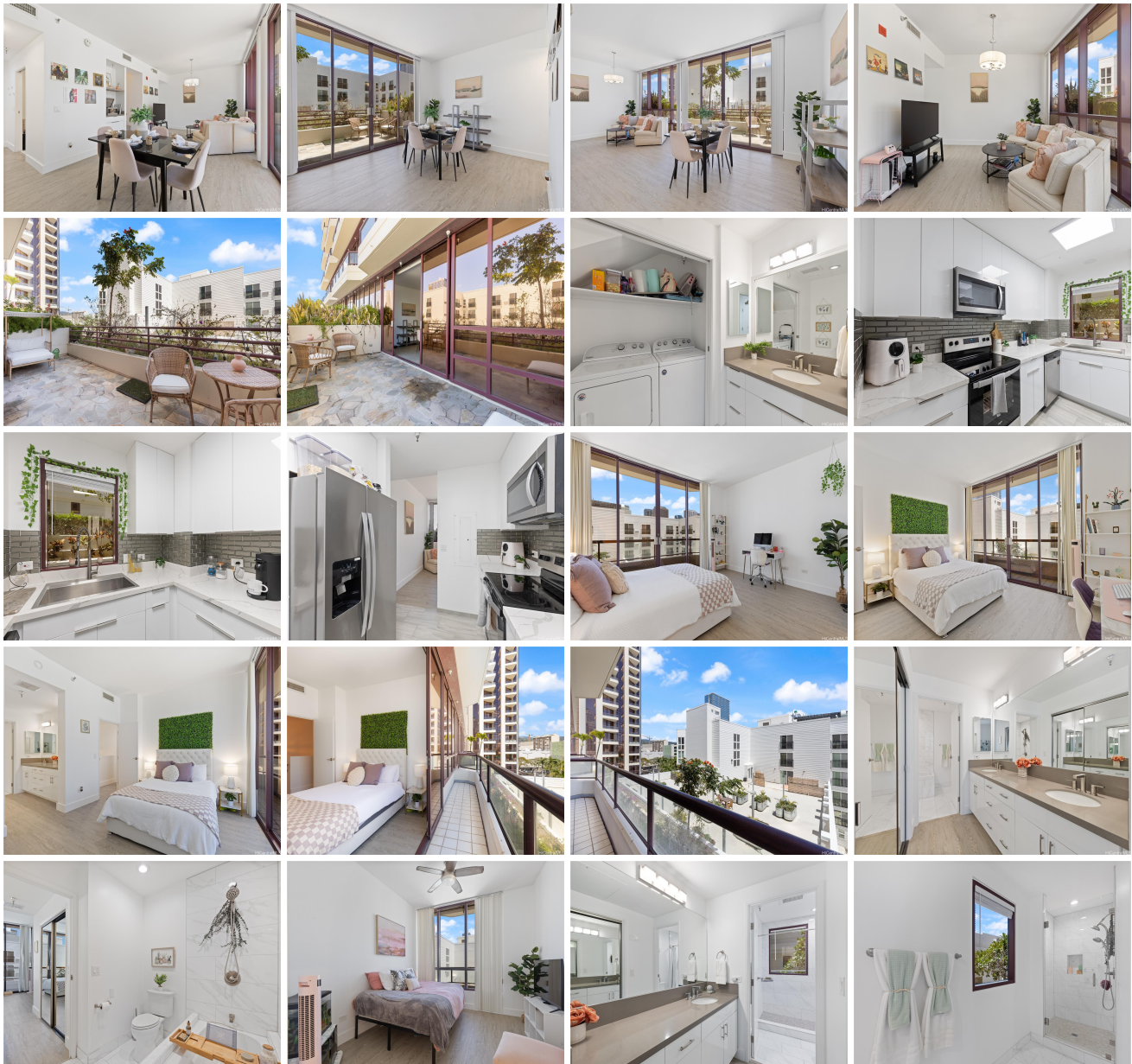


## **Imperial Plaza 725 Kapiolani Boulevard Unit 612, Honolulu 96813 \* Imperial Plaza \***

**\$760,000**

Beds: <b>2</b>	MLS#: <b><u>202407275</u>, FS</b>	Year Built: <b>1991</b>
Bath: <b>2/1</b>	Status: <b>Active</b>	Remodeled:
Living Sq. Ft.: <b>1,291</b>	List Date & DOM: <b>04-25-2024 &amp; 23</b>	Total Parking: <b>2</b>
Land Sq. Ft.: <b>110,294</b>	Condition: <b>Excellent</b>	<a href="#">Assessed Value</a>
Lanai Sq. Ft.: <b>246</b>	Frontage: <b>Other</b>	Building: <b>\$534,000</b>
Sq. Ft. Other: <b>0</b>	Tax/Year: <b>\$195/2024</b>	Land: <b>\$134,600</b>
Total Sq. Ft. <b>1,537</b>	Neighborhood: <b>Kakaako</b>	Total: <b>\$668,600</b>
Maint./Assoc. <b>\$1,657 / \$0</b>	<a href="#">Flood Zone</a> : <b>Zone X - Tool</b>	Stories / CPR: <b>Split Level / No</b>
Parking: <b>Assigned, Covered - 2, Guest, Secured Entry</b>	Frontage: <b>Other</b>	
<a href="#">Zoning</a> : <b>Kak - Kakaako Community Development Project</b>	View: <b>City, Diamond Head, Mountain, Sunrise</b>	

**Public Remarks:** Convenience and beauty all in one. Located in town while providing you with the luxuries of a home you just might not leave. We present to you, living large at the Imperial Plaza. This unit comes with a welcoming living room, an inviting kitchen, and a purposeful, downstairs half-bath. Live like royalty with two primary suites upstairs, because this split level townhome boasts of 10 foot ceilings, with a 246 sq ft lanai and a 1,291 sq ft living space. Renovations of over \$90K in 2021 includes: removed popcorn ceilings, appliances, luxury vinyl flooring throughout, bathroom: shower, luxury glass shower door, tub, bathroom fixtures, cabinets, back splash, plumbing, and light fixtures. Come see it for yourself. Schedule a showing today and don't miss out! **Sale Conditions:** None **Schools:** , , \* [Request Showing](#), [Photos](#), [History](#), [Maps](#), [Deed](#), [Watch List](#), [Tax Info](#)





Address	Price	Bd & Bth	Living / Avg.	Land   Avg.	Lanai	Occ.	FL	DOM
<a href="#">725 Kapiolani Boulevard 612</a>	<a href="#">\$760,000</a>	2 & 2/1	1,291   \$589	110,294   \$7	246	61%	6	23

Address	Tax   Maint.   Ass.	Assessed Land	Assessed Building	Assessed Total	Ratio	Year & Remodeled
<a href="#">725 Kapiolani Boulevard 612</a>	\$195   \$1,657   \$0	\$134,600	\$534,000	\$668,600	114%	1991 & NA

<p><a href="#">725 Kapiolani Boulevard 612</a> - MLS#: <a href="#">202407275</a> - Convenience and beauty all in one. Located in town while providing you with the luxuries of a home you just might not leave. We present to you, living large at the Imperial Plaza. This unit comes with a welcoming living room, an inviting kitchen, and a purposeful, downstairs half-bath. Live like royalty with two primary suites upstairs, because this split level townhome boasts of 10 foot ceilings, with a 246 sq ft lanai and a 1,291 sq ft living space. Renovations of over \$90K in 2021 includes: removed popcorn ceilings, appliances, luxury vinyl flooring throughout, bathroom: shower, luxury glass shower door, tub, bathroom fixtures, cabinets, back splash, plumbing, and light fixtures. Come see it for yourself. Schedule a showing today and don't miss out! <b>Region:</b> Metro <b>Neighborhood:</b> Kakaako <b>Condition:</b> Excellent <b>Parking:</b> Assigned, Covered - 2, Guest, Secured Entry <b>Total Parking:</b> 2 <b>View:</b> City, Diamond Head, Mountain, Sunrise <b>Frontage:</b> Other <b>Pool:</b> <b>Zoning:</b> Kak - Kakaako Community Development Project <b>Sale Conditions:</b> None <b>Schools:</b> , * <a href="#">Request Showing</a>, <a href="#">Photos</a>, <a href="#">History</a>, <a href="#">Maps</a>, <a href="#">Deed</a>, <a href="#">Watch List</a>, <a href="#">Tax Info</a></p>						
--	--	--	--	--	--	--

DOM = Days on Market, Occ. = Occupancy, FL = Floor Number