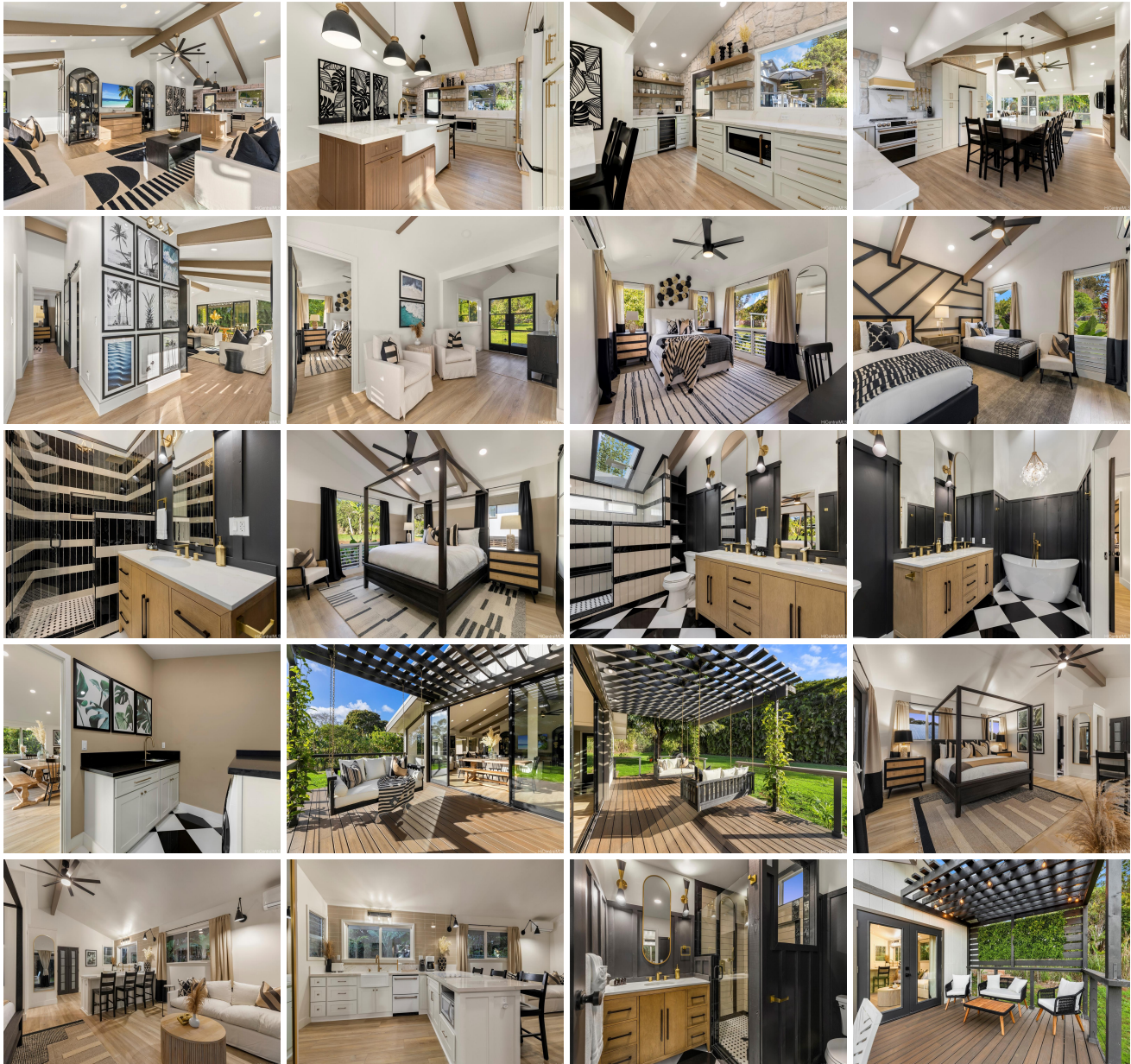


**59-405 Pupukea Road, Haleiwa 96712 \* \* \$3,600,000**

Beds: <b>4</b>	MLS#: <b>202407283, FS</b>	Year Built: <b>1978</b>
Bath: <b>3/0</b>	Status: <b>Active</b>	Remodeled: <b>2022</b>
Living Sq. Ft.: <b>2,128</b>	List Date & DOM: <b>04-12-2024 &amp; 36</b>	Total Parking: <b>3</b>
Land Sq. Ft.: <b>47,219</b>	Condition: <b>Excellent</b>	<a href="#">Assessed Value</a>
Lanai Sq. Ft.: <b>600</b>	Frontage:	Building: <b>\$596,400</b>
Sq. Ft. Other: <b>434</b>	Tax/Year: <b>\$519/2023</b>	Land: <b>\$1,187,900</b>
Total Sq. Ft. <b>3,162</b>	Neighborhood: <b>Pupukea</b>	Total: <b>\$1,784,300</b>
Maint./Assoc. <b>\$0 / \$0</b>	<a href="#">Flood Zone</a> : <b>Zone D - Tool</b>	Stories / CPR: <b>One / No</b>
Parking: <b>3 Car+, Driveway</b>	Frontage:	
<a href="#">Zoning</a> : <b>56 - Country District</b>	View: <b>Garden, Mountain, Other</b>	

**Public Remarks:** Experience luxury living in this meticulously crafted Pupukea estate, curated by a local designer with a recent full-scale renovation. The home is fully furnished and decorated, all included in the sale for immediate enjoyment. A grand entrance welcomes you, with a brand-new driveway leading to an automated aluminum gate. The fully fenced yard encompasses two residences, adorned with top-tier redwood fencing for privacy. The main house features 3 bedrooms, 2 bathrooms, a custom kitchen, and a primary bathroom with a skylight rain head and freestanding tub beneath an exquisite chandelier. A detached guest house offers a tranquil retreat with its own deck and kitchen. The backyard oasis boasts over 100 feet of towering areca palms, ideal for hosting gatherings. Meticulously landscaped grounds include over 30 fruit trees, 57 Italian cypress trees, and 3 mature Puakenikeni trees, enhancing the property's serene ambiance. Additionally, 24 owned solar panels with Net Metering through Hawaiian Electric provide eco-friendly energy solutions. See link for virtual tour. Note: Tax records differ from actual square footage and bedroom count. Yard photos have been enhanced. **Sale Conditions:** None

**Schools:** , , \* [Request Showing](#), [Photos](#), [History](#), [Maps](#), [Deed](#), [Watch List](#), [Tax Info](#)





Address	Price	Bd & Bth	Living / Avg.	Land   Avg.	Lanai	Occ.	FL	DOM
<a href="#">59-405 Pupukea Road</a>	<a href="#">\$3,600,000</a>	4 & 3/0	2,128   \$1,692	47,219   \$76	600	0%	0	36

Address	Tax   Maint.   Ass.	Assessed Land	Assessed Building	Assessed Total	Ratio	Year & Remodeled
<a href="#">59-405 Pupukea Road</a>	\$519   \$0   \$0	\$1,187,900	\$596,400	\$1,784,300	202%	1978 & 2022

[59-405 Pupukea Road](#) - MLS#: [202407283](#) - Experience luxury living in this meticulously crafted Pupukea estate, curated by a local designer with a recent full-scale renovation. The home is fully furnished and decorated, all included in the sale for immediate enjoyment. A grand entrance welcomes you, with a brand-new driveway leading to an automated aluminum gate. The fully fenced yard encompasses two residences, adorned with top-tier redwood fencing for privacy. The main house features 3 bedrooms, 2 bathrooms, a custom kitchen, and a primary bathroom with a skylight rain head and freestanding tub beneath an exquisite chandelier. A detached guest house offers a tranquil retreat with its own deck and kitchen. The backyard oasis boasts over 100 feet of towering areca palms, ideal for hosting gatherings. Meticulously landscaped grounds include over 30 fruit trees, 57 Italian cypress trees, and 3 mature Puakenikeni trees, enhancing the property's serene ambiance. Additionally, 24 owned solar panels with Net Metering through Hawaiian Electric provide eco-friendly energy solutions. See link for virtual tour. Note: Tax records differ from actual square footage and bedroom count. Yard photos have been enhanced. **Region:** North Shore **Neighborhood:** Pupukea **Condition:** Excellent **Parking:** 3 Car+, Driveway **Total Parking:** 3 **View:** Garden, Mountain, Other **Frontage:** **Pool:** None **Zoning:** 56 - Country District **Sale Conditions:** None **Schools:** , , \* [Request Showing](#), [Photos](#), [History](#), [Maps](#), [Deed](#), [Watch List](#), [Tax Info](#)

DOM = Days on Market, Occ. = Occupancy, FL = Floor Number