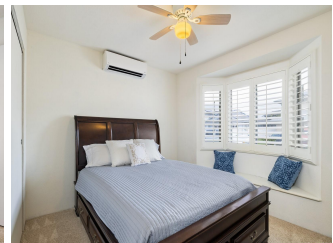
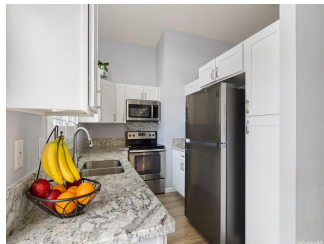
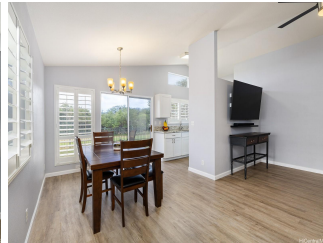


91-532 Maohaka Place, Ewa Beach 96706 * * \$885,000

Beds: 3	MLS#: 202407284, FS	Year Built: 1998
Bath: 2/0	Status: Pending	Remodeled: 2021
Living Sq. Ft.: 1,192	List Date & DOM: 04-12-2024 & 7	Total Parking: 4
Land Sq. Ft.: 3,750	Condition: Excellent	Assessed Value
Lanai Sq. Ft.: 0	Frontage: Golf Course	Building: \$248,800
Sq. Ft. Other: 0	Tax/Year: \$209/2023	Land: \$666,900
Total Sq. Ft. 1,192	Neighborhood: Ewa Gen Kula Lei	Total: \$915,700
Maint./Assoc. \$0 / \$50	Flood Zone : Zone D - Tool	Stories / CPR: One / No
Parking: 3 Car+, Driveway, Garage, Street	Frontage: Golf Course	
Zoning : 05 - R-5 Residential District	View: Golf Course, Sunrise, Sunset	

Public Remarks: This 1-story home in Kula Lei is rarely available and a MUST SEE! Located on Coral Creek Golf Course, you'll enjoy stunning sunrises & sunsets! Just a few homes away from the cul-de-sac, you'll notice the neighborhood is tranquil & quiet. Features of a 2021 whole-home remodel include: new flooring in every room, new kitchen cabinets & countertops, updated light fixtures, new bathroom sinks & vanities and a modern calm paint scheme. BUT that's not all! Recent upgrades are: sliding doors in the primary bedroom to lanai, new water heater, new garbage disposal, total roof replacement and new automatic garage door*. The openness of the living room and dining room makes it feel like you are right on the golf course. The front bedroom has a large bay window with seat/storage bench. Kula Lei is one of the only neighborhoods with a stop light, providing safer access to/across Kapolei Parkway. Nearby: Wai Kai Lagoon (3.2 miles); KaMakana Ali'i Mall w/Foodland Farms (1.8 miles), Laulani Shopping Center w/ Safeway (1.3 miles), Ewa Town Center w/Foodland (1.1 miles), Costco (4.2 miles) and Kapolei Commons w/Target (4.6 miles). Plus beaches, parks and many shops & restaurants. **Sale Conditions:** None **Schools:** [Ewa Beach](#), [Ewa Makai](#), [Campbell](#) * [Request Showing](#), [Photos](#), [History](#), [Maps](#), [Deed](#), [Watch List](#), [Tax Info](#)





Address	Price	Bd & Bth	Living / Avg.	Land Avg.	Lanai	Occ.	FL	DOM
91-532 Maohaka Place	\$885,000	3 & 2/0	1,192 \$742	3,750 \$236	0	0%	0	7

Address	Tax Maint. Ass.	Assessed Land	Assessed Building	Assessed Total	Ratio	Year & Remodeled
91-532 Maohaka Place	\$209 \$0 \$50	\$666,900	\$248,800	\$915,700	97%	1998 & 2021

[91-532 Maohaka Place](#) - MLS#: [202407284](#) - This 1-story home in Kula Lei is rarely available and a MUST SEE! Located on Coral Creek Golf Course, you'll enjoy stunning sunrises & sunsets! Just a few homes away from the cul-de-sac, you'll notice the neighborhood is tranquil & quiet. Features of a 2021 whole-home remodel include: new flooring in every room, new kitchen cabinets & countertops, updated light fixtures, new bathroom sinks & vanities and a modern calm paint scheme. BUT that's not all! Recent upgrades are: sliding doors in the primary bedroom to lanai, new water heater, new garbage disposal, total roof replacement and new automatic garage door*. The openness of the living room and dining room makes it feel like you are right on the golf course. The front bedroom has a large bay window with seat/storage bench. Kula Lei is one of the only neighborhoods with a stop light, providing safer access to/across Kapolei Parkway. Nearby: Wai Kai Lagoon (3.2 miles); KaMakana Ali'i Mall w/Foodland Farms (1.8 miles), Laulani Shopping Center w/ Safeway (1.3 miles), Ewa Town Center w/Foodland (1.1 miles), Costco (4.2 miles) and Kapolei Commons w/Target (4.6 miles). Plus beaches, parks and many shops & restaurants. **Region:** Ewa Plain **Neighborhood:** Ewa Gen Kula Lei **Condition:** Excellent **Parking:** 3 Car+, Driveway, Garage, Street **Total Parking:** 4 **View:** Golf Course, Sunrise, Sunset **Frontage:** Golf Course **Pool:** None **Zoning:** 05 - R-5 Residential District **Sale Conditions:** None **Schools:** [Ewa Beach](#), [Ewa Makai](#), [Campbell](#) * [Request Showing](#), [Photos](#), [History](#), [Maps](#), [Deed](#), [Watch List](#), [Tax Info](#)

DOM = Days on Market, Occ. = Occupancy, FL = Floor Number