

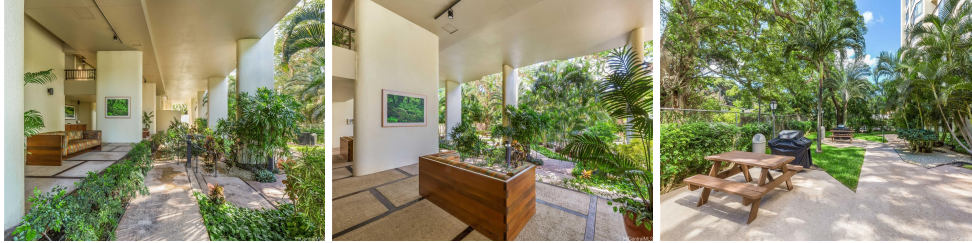
Nuuanu Brookside 55 S Judd Street Unit 707, Honolulu 96817 * Nuuanu Brookside *

\$499,900 * Originally \$548,800

Beds: 2	MLS#: 202407299, LH	Year Built: 1979
Bath: 2/0	Status: Active	Remodeled:
Living Sq. Ft.: 1,292	List Date & DOM: 04-03-2024 & 43	Total Parking: 2
Land Sq. Ft.: 51,793	Condition: Average	Assessed Value
Lanai Sq. Ft.: 0	Frontage: Stream/Canal	Building: \$628,300
Sq. Ft. Other: 0	Tax/Year: \$203/2023	Land: \$67,300
Total Sq. Ft. 1,292	Neighborhood: Nuuanu-lower	Total: \$695,600
Maint./Assoc. \$1,230 / \$0	Flood Zone : Zone X - Tool	Stories / CPR: 21+ / No
Parking: Assigned, Covered - 2, Guest, Secured Entry	Frontage: Stream/Canal	
Zoning : 13 - A-3 High Density Apartment	View: City	

Public Remarks: Great lease! Runs through 2070. Fix lease rent for the life of the lease. Come home to your tranquil 2 bed/2 bath/2 covered parking near downtown Honolulu. From this corner-unit, you'll enjoy natural light as well as views of blue sky, city lights & lush trees. Delight in the perfect amount of amenities: heated pool, hot tub, private gym with sauna & showers, & outdoor barbecue recreation areas. Well- kept building with an attentive resident manager, 24-hour security, & plenty of guest parking. Located on a cul-de-sac with controlled FOB access to the lobby and parking garage. Three elevators get you up to your unit quickly. Kitchen fully equipped with large stainless steel refrigerator, stove, oven, range hood, and kitchen-living room pass-through. The proximity to the mountains and Nuuanu Valley breeze keeps your home full of fresh, cool air. Enjoy a short drive to freeway access, downtown Honolulu, shopping, dining & entertainment. Peaceful unit with ample space for leisurely living & entertaining. Vacant & very easy to see. **Sale Conditions:** None **Schools:** [Pauoa](#), [Kawananakoa](#), [Roosevelt](#) * [Request Showing](#), [Photos](#), [History](#), [Maps](#), [Deed](#), [Watch List](#), [Tax Info](#)





Address	Price	Bd & Bth	Living / Avg.	Land Avg.	Lanai	Occ.	FL	DOM
55 S Judd Street 707	\$499,900 LH	2 & 2/0	1,292 \$387	51,793 \$10	0	59%	7	43

Address	Tax Maint. Ass.	Assessed Land	Assessed Building	Assessed Total	Ratio	Year & Remodeled
55 S Judd Street 707	\$203 \$1,230 \$0	\$67,300	\$628,300	\$695,600	72%	1979 & NA

[55 S Judd Street 707](#) - MLS#: [202407299](#) - Original price was \$548,800 - Great lease! Runs through 2070. Fix lease rent for the life of the lease. Come home to your tranquil 2 bed/2 bath/2 covered parking near downtown Honolulu. From this corner-unit, you'll enjoy natural light as well as views of blue sky, city lights & lush trees. Delight in the perfect amount of amenities: heated pool, hot tub, private gym with sauna & showers, & outdoor barbecue recreation areas. Well-kept building with an attentive resident manager, 24-hour security, & plenty of guest parking. Located on a cul-de-sac with controlled FOB access to the lobby and parking garage. Three elevators get you up to your unit quickly. Kitchen fully equipped with large stainless steel refrigerator, stove, oven, range hood, and kitchen-living room pass-through. The proximity to the mountains and Nuuanu Valley breeze keeps your home full of fresh, cool air. Enjoy a short drive to freeway access, downtown Honolulu, shopping, dining & entertainment. Peaceful unit with ample space for leisurely living & entertaining. Vacant & very easy to see. **Region:** Metro **Neighborhood:** Nuuanu-lower **Condition:** Average **Parking:** Assigned, Covered - 2, Guest, Secured Entry **Total Parking:** 2 **View:** City **Frontage:** Stream/Canal **Pool:** **Zoning:** 13 - A-3 High Density Apartment **Sale Conditions:** None **Schools:** [Pauoa](#), [Kawananakoa](#), [Roosevelt](#) * [Request Showing](#), [Photos](#), [History](#), [Maps](#), [Deed](#), [Watch List](#), [Tax Info](#)

DOM = Days on Market, Occ. = Occupancy, FL = Floor Number