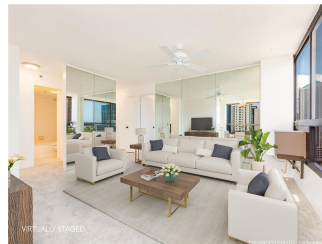
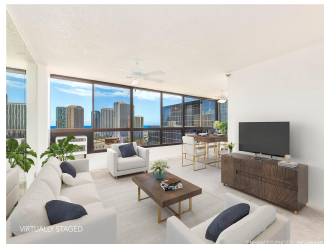


Royal Capitol Plaza 876 Curtis Street Unit 2304, Honolulu 96813 * Royal Capitol Plaza ***\$649,000 * Originally \$655,000**

Beds: 2	MLS#: 202407344, FS	Year Built: 1987
Bath: 2/0	Status: Active	Remodeled: 2024
Living Sq. Ft.: 885	List Date & DOM: 04-03-2024 & 43	Total Parking: 1
Land Sq. Ft.: 0	Condition: Excellent	Assessed Value
Lanai Sq. Ft.: 0	Frontage:	Building: \$613,800
Sq. Ft. Other: 0	Tax/Year: \$197/2023	Land: \$58,800
Total Sq. Ft. 885	Neighborhood: Kakaako	Total: \$672,600
Maint./Assoc. \$884 / \$0	Flood Zone : Zone X - Tool	Stories / CPR: 21+ / No
Parking: Covered - 1	Frontage:	
Zoning : Kak - Kakaako Community Development Project	View: City, Mountain, Ocean	

Public Remarks: **OPEN HOUSE THIS SUNDAY 5/19 FROM 2:30-5PM** KAKAAKO'S HIDDEN GEM! MOVE IN READY! NEWLY REMODELED! Welcome to the Royal Capitol Plaza bldg in the trendy neighborhood of Kakaako. This highly desirable corner end 2 bdrm, 2 bath residence is on the 23rd floor & features breathtaking panoramic views of the ocean, mountain & cityscape. Upgraded kitchen, bathroom, flooring, appliances, paint, etc. Relax & enjoy your views in every room. Spacious open Living Room that also fits a dining area (great for entertaining), Primary Bedroom w/ Full Bathroom & 2nd Bedroom near Hallway Bathroom. Washer/Dryer in unit. Located on the cooler side of the building w/ breezy trade winds. 1 assigned covered corner parking stall, spacious & near elevator. Additional parking may be available to rent at nearby parking garage. Amenities include a pool, hot tub, rec deck w/ BBQ grills & tables, gym, sauna, meeting/party room, storage locker, car wash, guest parking, surfboard/bike storage, convenience store at lobby, etc. Secured bldg, key fob entry, security at lobby, on-site manager. Walking distance to beach, park, shopping, restaurants, nightlife, & more. Property sold as-is. *CLICK ON VIRTUAL TOUR LINK* **Sale Conditions:** None **Schools:** , , * [Request Showing](#), [Photos](#), [History](#), [Maps](#), [Deed](#), [Watch List](#), [Tax Info](#)



Address	Price	Bd & Bth	Living / Avg.	Land Avg.	Lanai	Occ.	FL	DOM
876 Curtis Street 2304	\$649,000	2 & 2/0	885 \$733	0 \$inf	0	73%	23	43

Address	Tax Maint. Ass.	Assessed Land	Assessed Building	Assessed Total	Ratio	Year & Remodeled
876 Curtis Street 2304	\$197 \$884 \$0	\$58,800	\$613,800	\$672,600	96%	1987 & 2024

[876 Curtis Street 2304](#) - MLS#: [202407344](#) - Original price was \$655,000 - **OPEN HOUSE THIS SUNDAY 5/19 FROM 2:30-5PM** KAKAAKO'S HIDDEN GEM! MOVE IN READY! NEWLY REMODELED! Welcome to the Royal Capitol Plaza bldg in the trendy neighborhood of Kakaako. This highly desirable corner end 2 bdrm, 2 bath residence is on the 23rd floor & features breathtaking panoramic views of the ocean, mountain & cityscape. Upgraded kitchen, bathroom, flooring, appliances, paint, etc. Relax & enjoy your views in every room. Spacious open Living Room that also fits a dining area (great for entertaining), Primary Bedroom w/ Full Bathroom & 2nd Bedroom near Hallway Bathroom. Washer/Dryer in unit. Located on the cooler side of the building w/ breezy trade winds. 1 assigned covered corner parking stall, spacious & near elevator. Additional parking may be available to rent at nearby parking garage. Amenities include a pool, hot tub, rec deck w/ BBQ grills & tables, gym, sauna, meeting/party room, storage locker, car wash, guest parking, surfboard/bike storage, convenience store at lobby, etc. Secured bldg, key fob entry, security at lobby, on-site manager. Walking distance to beach, park, shopping, restaurants, nightlife, & more. Property sold as-is. *CLICK ON VIRTUAL TOUR LINK* **Region:** Metro **Neighborhood:** Kakaako **Condition:** Excellent **Parking:** Covered - 1 **Total Parking:** 1 **View:** City, Mountain, Ocean **Frontage:** Pool: **Zoning:** Kak - Kakaako Community Development Project **Sale Conditions:** None **Schools:** , , * [Request Showing](#), [Photos](#), [History](#), [Maps](#), [Deed](#), [Watch List](#), [Tax Info](#)

DOM = Days on Market, Occ. = Occupancy, FL = Floor Number