

Pavilion at Waikiki 1925 Kalakaua Avenue Unit 1002, Honolulu 96815 * Pavilion at Waikiki

*** \$519,000**

Beds: **1**
Bath: **1/0**
Living Sq. Ft.: **546**
Land Sq. Ft.: **24,655**
Lanai Sq. Ft.: **104**
Sq. Ft. Other: **0**
Total Sq. Ft. **650**
Maint./Assoc. **\$915 / \$0**
Parking: **Assigned**

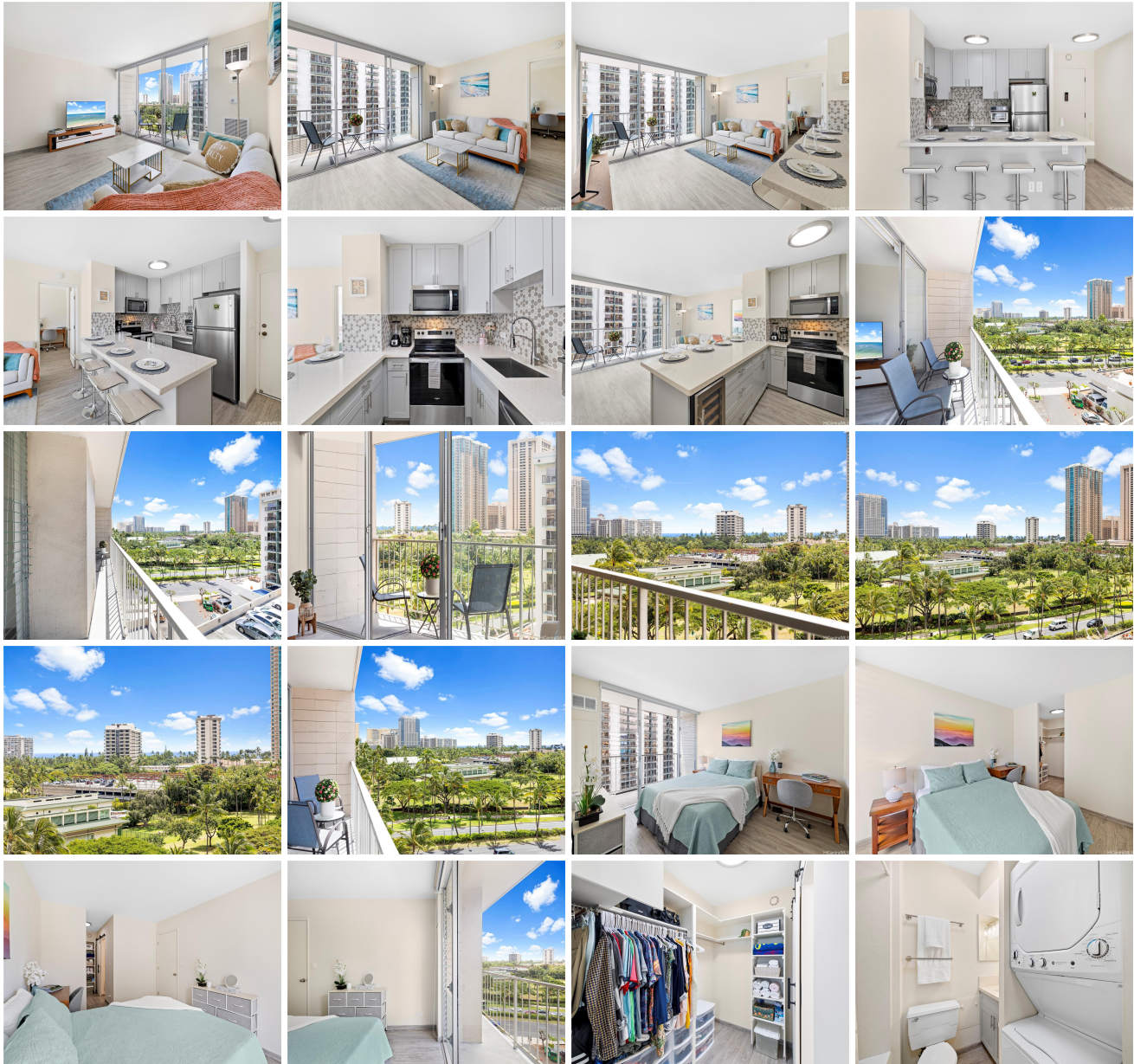
MLS#: **202407433, FS**
Status: **Active**
List Date & DOM: **04-02-2024 & 48**
Condition: **Excellent**
Frontage:
Tax/Year: **\$133/2023**
Neighborhood: **Waikiki**
Flood Zone: Zone AO - Tool

Year Built: **1975**
Remodeled: **2022**
Total Parking: **1**
Assessed Value
Building: **\$433,000**
Land: **\$24,200**
Total: **\$457,200**
Stories / CPR: **21+ / No**

Zoning: X6 - Resort Mixed Use Precinct

Frontage:
View: Ocean

Public Remarks: Welcome to Waikiki living at its finest with this bright and tastefully remodeled condo! This fully remodeled unit at Pavilion at Waikiki offers a beautifully updated space with modern finishes. Enjoy great natural light and stunning views from the convenience of this centrally located condo. This unit is ideal for a second home as it is located within walking distance to the world famous Waikiki beach, offering a convenient and relaxing escape for weekends or vacations. The unit can easily be rented out to those looking for a beachside retreat, making it a great investment property. As a primary residence, the unit's central location at the corner of two major boulevards in Honolulu town provides easy access to shopping centers, restaurants, and entertainment options. You can take a stroll in Fort DeRussy park, which is across the street! You can enjoy the vibrant local culture and participate in fun parades, and events in Waikiki. Overall, this unit offers a versatile and desirable living option for a variety of lifestyles. **Sale Conditions:** None **Schools:** , , * **Request Showing, Photos, History, Maps, Deed, Watch List, Tax Info**





Address	Price	Bd & Bth	Living / Avg.	Land Avg.	Lanai	Occ.	FL	DOM
1925 Kalakaua Avenue 1002	\$519,000	1 & 1/0	546 \$951	24,655 \$21	104	43%	10	48

Address	Tax Maint. Ass.	Assessed Land	Assessed Building	Assessed Total	Ratio	Year & Remodeled
1925 Kalakaua Avenue 1002	\$133 \$915 \$0	\$24,200	\$433,000	\$457,200	114%	1975 & 2022

[1925 Kalakaua Avenue 1002](#) - MLS#: [202407433](#) - Welcome to Waikiki living at its finest with this bright and tastefully remodeled condo! This fully remodeled unit at Pavilion at Waikiki offers a beautifully updated space with modern finishes. Enjoy great natural light and stunning views from the convenience of this centrally located condo. This unit is ideal for a second home as it is located within walking distance to the world famous Waikiki beach, offering a convenient and relaxing escape for weekends or vacations. The unit can easily be rented out to those looking for a beachside retreat, making it a great investment property. As a primary residence, the unit's central location at the corner of two major boulevards in Honolulu town provides easy access to shopping centers, restaurants, and entertainment options. You can take a stroll in Fort DeRussy park, which is across the street! You can enjoy the vibrant local culture and participate in fun parades, and events in Waikiki. Overall, this unit offers a versatile and desirable living option for a variety of lifestyles. **Region:** Metro **Neighborhood:** Waikiki **Condition:** Excellent **Parking:** Assigned **Total Parking:** 1 **View:** Ocean **Frontage:** Pool: **Zoning:** X6 - Resort Mixed Use Precinct **Sale Conditions:** None **Schools:** , , * [Request Showing](#), [Photos](#), [History](#), [Maps](#), [Deed](#), [Watch List](#), [Tax Info](#)

DOM = Days on Market, Occ. = Occupancy, FL = Floor Number