

Sky Ala Moana West 1388 Kapiolani Boulevard Unit 3702, Honolulu 96814 * Sky Ala Moana

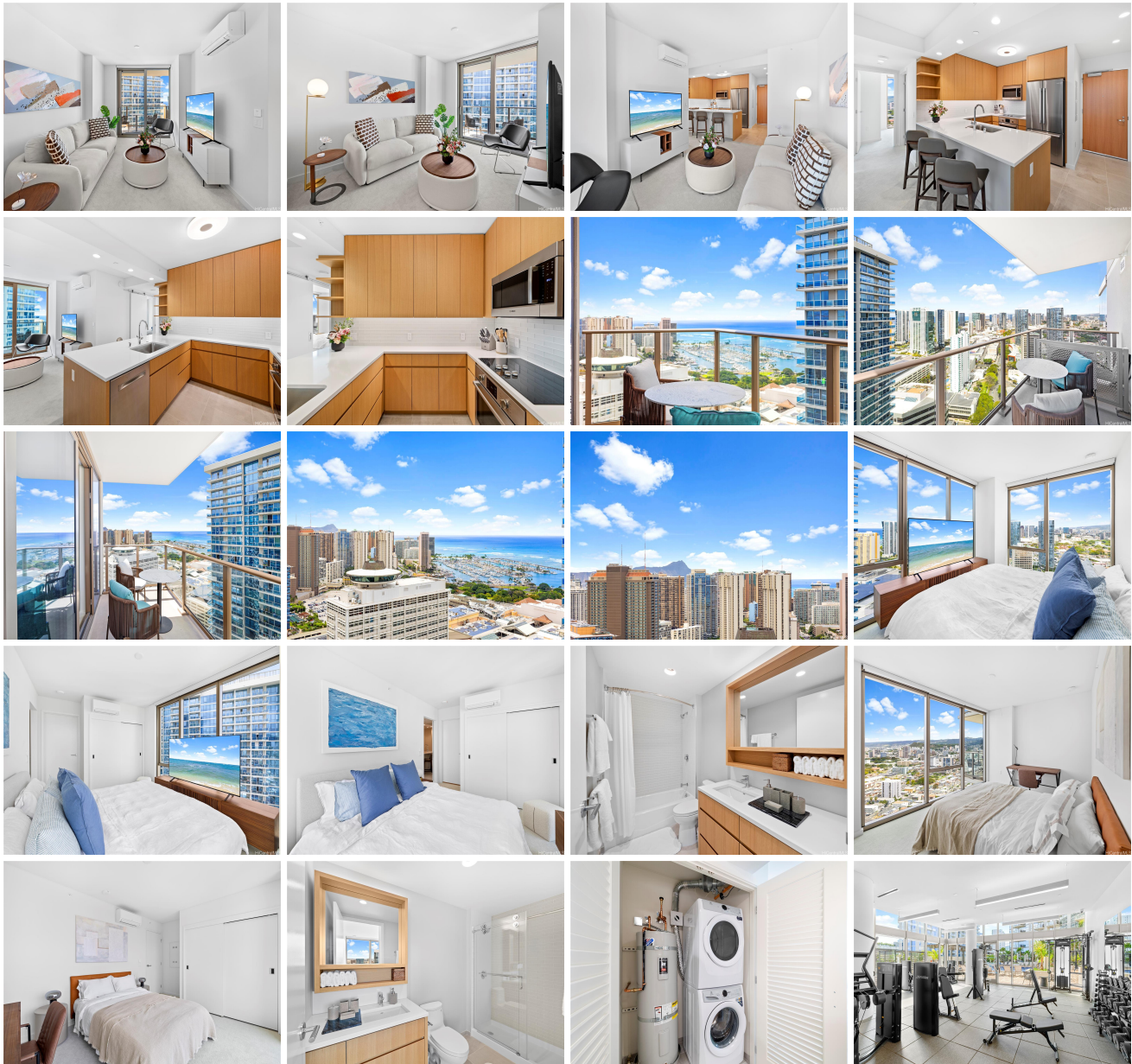
West * \$1,150,000 * Originally \$1,200,000

Beds: 2	MLS#: 202407481, FS	Year Built: 2023
Bath: 2/0	Status: Active	Remodeled:
Living Sq. Ft.: 822	List Date & DOM: 04-02-2024 & 44	Total Parking: 2
Land Sq. Ft.: 0	Condition: Excellent	Assessed Value
Lanai Sq. Ft.: 91	Frontage:	Building: \$990,700
Sq. Ft. Other: 0	Tax/Year: \$306/2024	Land: \$56,400
Total Sq. Ft. 913	Neighborhood: Holiday Mart	Total: \$1,047,100
Maint./Assoc. \$1,079 / \$0	Flood Zone : Zone X - Tool	Stories / CPR: 21+ / No
Parking: Covered - 1, Garage, Guest, Secured Entry	Frontage:	

[Zoning](#): 33 - BMX-3 Community Business M

View: City, Diamond Head, Mountain, Ocean, Sunset

Public Remarks: Wonderful opportunity to own a brand new, fully furnished and highly desirable Sky Ala Moana West. High floor 2 bedroom, 2 bathroom unit with amazing views of the ocean and the city. Located in the center of Ala Moana area and conveniently located near Ala Moana Center and Ala Moana Beach Park. Enjoy your luxury amenities in the building which features a pool & whirlpool spa, private dining rooms, playground, cabanas, BBQ area, fitness areas and more! Unit features upgraded stainless steel appliances. 2 covered garage parking stalls which includes storage locker. **Sale Conditions:** None
Schools: [Kaahumanu](#), [Stevenson](#), [Mckinley](#) * [Request Showing](#), [Photos](#), [History](#), [Maps](#), [Deed](#), [Watch List](#), [Tax Info](#)





Address	Price	Bd & Bth	Living / Avg.	Land Avg.	Lanai	Occ.	FL	DOM
1388 Kapiolani Boulevard 3702	\$1,150,000	2 & 2/0	822 \$1,399	0 \$inf	91	50%	37	44

Address	Tax Maint. Ass.	Assessed Land	Assessed Building	Assessed Total	Ratio	Year & Remodeled
1388 Kapiolani Boulevard 3702	\$306 \$1,079 \$0	\$56,400	\$990,700	\$1,047,100	110%	2023 & NA

[1388 Kapiolani Boulevard 3702](#) - MLS#: [202407481](#) - Original price was \$1,200,000 - Wonderful opportunity to own a brand new, fully furnished and highly desirable Sky Ala Moana West. High floor 2 bedroom, 2 bathroom unit with amazing views of the ocean and the city. Located in the center of Ala Moana area and conveniently located near Ala Moana Center and Ala Moana Beach Park. Enjoy your luxury amenities in the building which features a pool & whirlpool spa, private dining rooms, playground, cabanas, BBQ area, fitness areas and more! Unit features upgraded stainless steel appliances. 2 covered garage parking stalls which includes storage locker. **Region:** Metro **Neighborhood:** Holiday Mart **Condition:** Excellent **Parking:** Covered - 1, Garage, Guest, Secured Entry **Total Parking:** 2 **View:** City, Diamond Head, Mountain, Ocean, Sunset **Frontage:** Pool: **Zoning:** 33 - BMX-3 Community Business M **Sale Conditions:** None **Schools:** [Kaahumanu](#), [Stevenson](#), [Mckinley](#) * [Request Showing](#), [Photos](#), [History](#), [Maps](#), [Deed](#), [Watch List](#), [Tax Info](#)

DOM = Days on Market, Occ. = Occupancy, FL = Floor Number