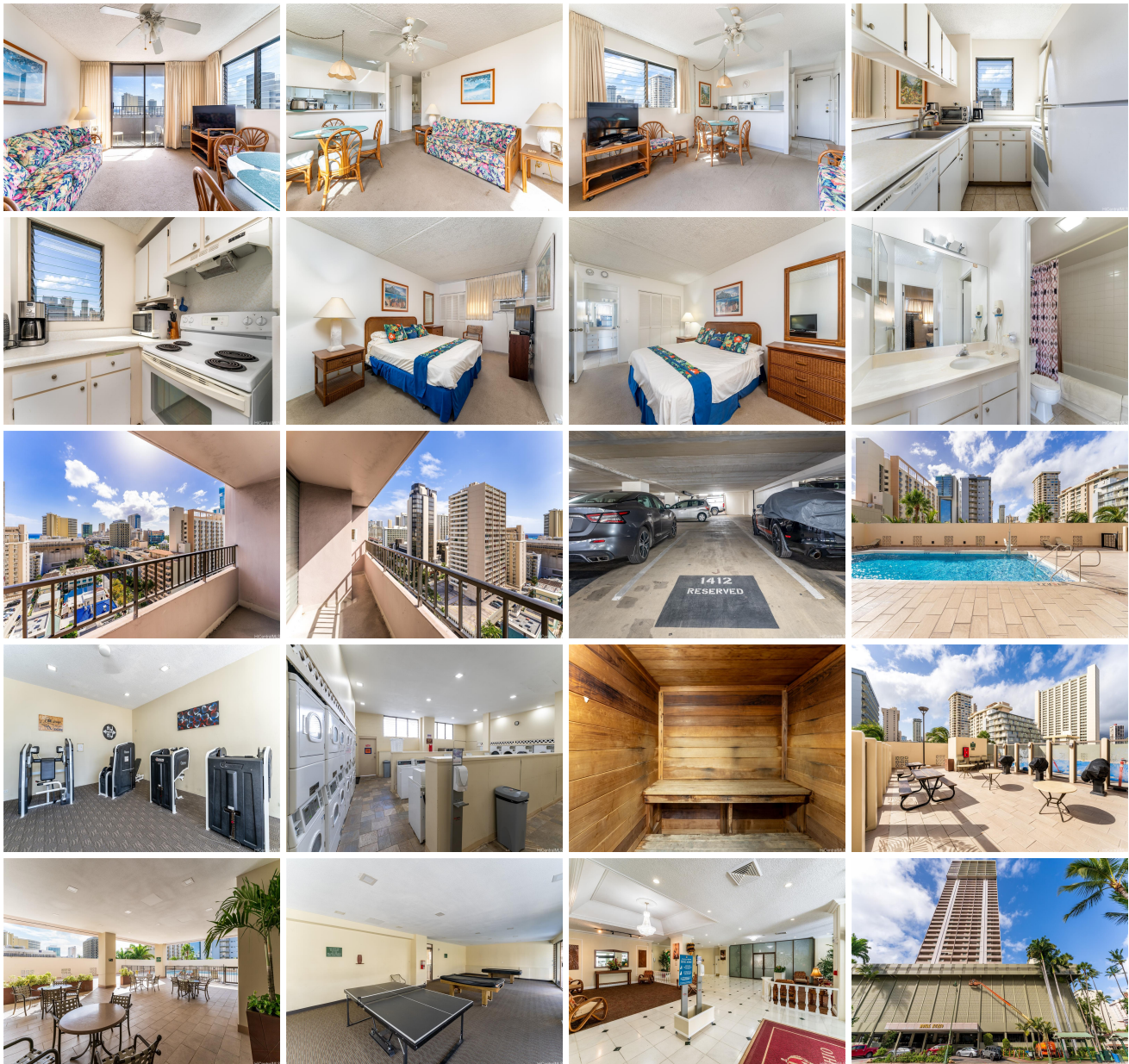


## Royal Kuhio 2240 Kuhio Avenue Unit 1412, Honolulu 96815 \* Royal Kuhio \* \$188,000

Beds: <b>1</b>	MLS#: <b>202407548, LH</b>	Year Built: <b>1976</b>
Bath: <b>1/0</b>	Status: <b>Active</b>	Remodeled:
Living Sq. Ft.: <b>538</b>	List Date & DOM: <b>04-12-2024 &amp; 35</b>	Total Parking: <b>1</b>
Land Sq. Ft.: <b>0</b>	Condition: <b>Average</b>	<a href="#">Assessed Value</a>
Lanai Sq. Ft.: <b>76</b>	Frontage:	Building: <b>\$416,100</b>
Sq. Ft. Other: <b>0</b>	Tax/Year: <b>\$123/2024</b>	Land: <b>\$41,000</b>
Total Sq. Ft. <b>614</b>	Neighborhood: <b>Waikiki</b>	Total: <b>\$457,100</b>
Maint./Assoc. <b>\$999 / \$0</b>	<a href="#">Flood Zone</a> : <b>Zone AO - Tool</b>	Stories / CPR: / <b>No</b>
Parking: <b>Assigned, Covered - 1, Secured Entry, Street</b>	Frontage:	
<a href="#">Zoning</a> : <b>X2 - Apartment Precinct</b>	View: <b>City, Mountain, Ocean</b>	

**Public Remarks:** NEW LISTING!! Enjoy city, mountain and ocean views from this 1 bdrm/1 bath/1 covered pkg CORNER/END unit in Royal Kuhio. Situated in the heart of Waikiki, this unit features an extra window for more natural light, a spacious bedroom and a lanai where you can relax and soak in the views. Enjoy amazing amenities such as a pool, exercise room, BBQ area, recreation room, security and more! Located near world-renown Waikiki Beach and an abundance of shopping, restaurants and entertainment. A must see! **Sale Conditions:** None **Schools:** [Jefferson](#), [Washington](#), [Kaimuki](#) \* [Request Showing](#), [Photos](#), [History](#), [Maps](#), [Deed](#), [Watch List](#), [Tax Info](#)



Address	Price	Bd & Bth	Living / Avg.	Land   Avg.	Lanai	Occ.	FL	DOM
<a href="#">2240 Kuhio Avenue 1412</a>	<a href="#">\$188,000 LH</a>	1 & 1/0	538   \$349	0   \$inf	76	10%	14	35

Address	Tax   Maint.   Ass.	Assessed Land	Assessed Building	Assessed Total	Ratio	Year & Remodeled
<a href="#">2240 Kuhio Avenue 1412</a>	\$123   \$999   \$0	\$41,000	\$416,100	\$457,100	41%	1976 & NA

[2240 Kuhio Avenue 1412](#) - MLS#: [202407548](#) - NEW LISTING!! Enjoy city, mountain and ocean views from this 1 bdrm/1 bath/1 covered pkg CORNER/END unit in Royal Kuhio. Situated in the heart of Waikiki, this unit features an extra window for more natural light, a spacious bedroom and a lanai where you can relax and soak in the views. Enjoy amazing amenities such as a pool, exercise room, BBQ area, recreation room, security and more! Located near world-renown Waikiki Beach and an abundance of shopping, restaurants and entertainment. A must see! **Region:** Metro **Neighborhood:** Waikiki **Condition:** Average **Parking:** Assigned, Covered - 1, Secured Entry, Street **Total Parking:** 1 **View:** City, Mountain, Ocean **Frontage:** **Pool:** **Zoning:** X2 - Apartment Precinct **Sale Conditions:** None **Schools:** [Jefferson](#), [Washington](#), [Kaimuki](#) \* [Request Showing](#), [Photos](#), [History](#), [Maps](#), [Deed](#), [Watch List](#), [Tax Info](#)

DOM = Days on Market, Occ. = Occupancy, FL = Floor Number