

Windward Passage 322 Aolaa Street Unit 1410, Kailua 96734 * Windward Passage *

\$615,000

Beds: **1**

MLS#: **202407551, FS**

Year Built: **1979**

Bath: **1/0**

Status: **Active Under Contract**

Remodeled:

Living Sq. Ft.: **713**

List Date & DOM: **04-23-2024 & 19**

Total Parking: **1**

Land Sq. Ft.: **134,600**

Condition: **Above Average**

[Assessed Value](#)

Lanai Sq. Ft.: **0**

Frontage:

Building: **\$532,700**

Sq. Ft. Other: **0**

Tax/Year: **\$121/2023**

Land: **\$83,500**

Total Sq. Ft. **713**

Neighborhood: **Kailua Town**

Total: **\$616,200**

Maint./Assoc. **\$739 / \$0**

[Flood Zone](#): **Zone X - Tool**

Stories / CPR: **21+ / No**

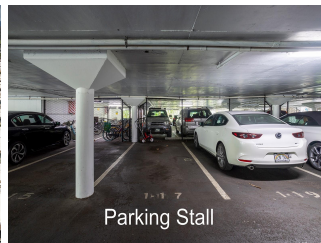
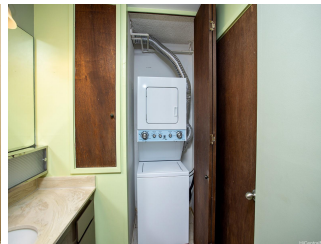
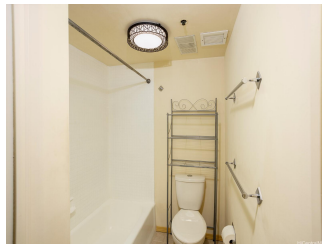
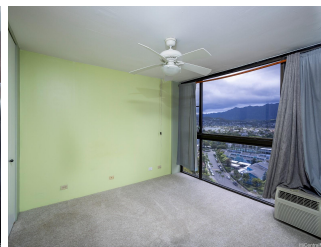
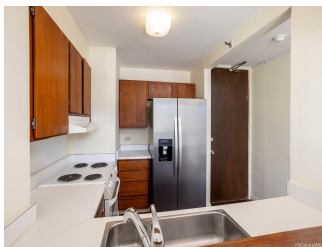
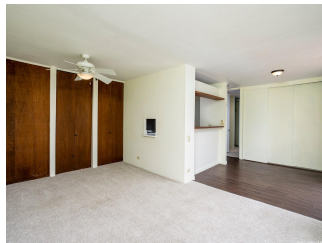
Parking: **Covered - 1**

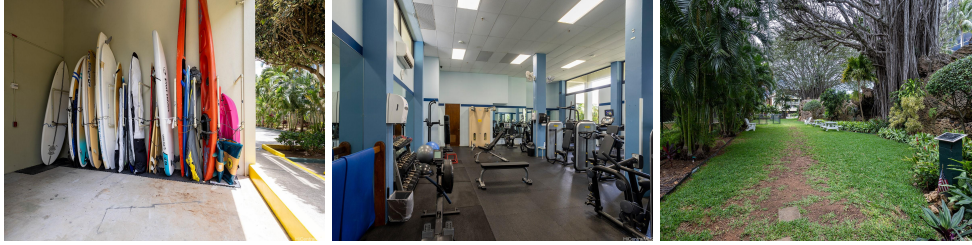
Frontage:

[Zoning](#): **12 - A-2 Medium Density Apartme**

View: **Mountain, Sunrise, Sunset**

Public Remarks: Enjoy the beauty of the Ko'olau, Olomana, and Ka'elepulu right out of your windows with this high-level one-bedroom unit on the south-facing side of Windward Passage. Enjoy beautiful sunrises and sunsets during the winter and sheltered from the heat of the direct summer sun. A/C in both living room and bedroom. The unit is move-in ready and ready for the new owner's personal touches to design your perfect home. The unit's popcorn ceiling has been removed with new flooring and carpet installed. Personal storage locker with the unit, one-covered parking stall, stall 117. Resort-style amenities include a heated pool, spa, BBQ area, tennis courts, indoor basketball court, fitness room, dog park, and recreation room. Centrally located in Kailua Town and just a short distance to the world-famous Kailua Beach. Enjoy the Kailua lifestyle with surfboard, kayak, and bicycle storage. **Sale Conditions:** None **Schools:** [Kailua](#), [Kailua](#), [Kalaheo](#) * [Request Showing](#), [Photos](#), [History](#), [Maps](#), [Deed](#), [Watch List](#), [Tax Info](#)





Address	Price	Bd & Bth	Living / Avg.	Land Avg.	Lanai	Occ.	FL	DOM
322 Aoloa Street 1410	\$615,000	1 & 1/0	713 \$863	134,600 \$5	0	51%	1	19

Address	Tax Maint. Ass.	Assessed Land	Assessed Building	Assessed Total	Ratio	Year & Remodeled
322 Aoloa Street 1410	\$121 \$739 \$0	\$83,500	\$532,700	\$616,200	100%	1979 & NA

[322 Aoloa Street 1410](#) - MLS#: [202407551](#) - Enjoy the beauty of the Ko'olau, Olomana, and Ka'elepulu right out of your windows with this high-level one-bedroom unit on the south-facing side of Windward Passage. Enjoy beautiful sunrises and sunsets during the winter and sheltered from the heat of the direct summer sun. A/C in both living room and bedroom. The unit is move-in ready and ready for the new owner's personal touches to design your perfect home. The unit's popcorn ceiling has been removed with new flooring and carpet installed. Personal storage locker with the unit, one-covered parking stall, stall 117. Resort-style amenities include a heated pool, spa, BBQ area, tennis courts, indoor basketball court, fitness room, dog park, and recreation room. Centrally located in Kailua Town and just a short distance to the world-famous Kailua Beach. Enjoy the Kailua lifestyle with surfboard, kayak, and bicycle storage. **Region:** Kailua **Neighborhood:** Kailua Town **Condition:** Above Average **Parking:** Covered - 1 **Total Parking:** 1 **View:** Mountain, Sunrise, Sunset **Frontage:** **Pool:** **Zoning:** 12 - A-2 Medium Density Apartme **Sale Conditions:** None **Schools:** [Kailua](#), [Kailua](#), [Kalaheo](#) * [Request Showing](#), [Photos](#), [History](#), [Maps](#), [Deed](#), [Watch List](#), [Tax Info](#)

DOM = Days on Market, Occ. = Occupancy, FL = Floor Number