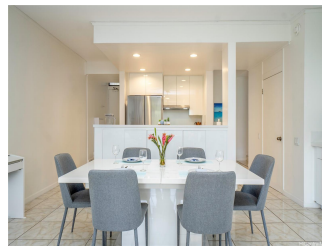
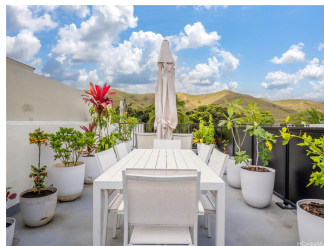


Windward Cove 1020 Aoloa Place Unit 405A, Kailua 96734 * Windward Cove * \$975,000

Beds: 3	MLS#: 202407595, FS	Year Built: 1980
Bath: 2/0	Status: Active	Remodeled:
Living Sq. Ft.: 1,240	List Date & DOM: 04-05-2024 & 41	Total Parking: 2
Land Sq. Ft.: 142,833	Condition: Excellent	Assessed Value
Lanai Sq. Ft.: 0	Frontage: Stream/Canal	Building: \$609,100
Sq. Ft. Other: 0	Tax/Year: \$300/2023	Land: \$258,300
Total Sq. Ft. 1,240	Neighborhood: Kailua Town	Total: \$867,400
Maint./Assoc. \$1,311 / \$0	Flood Zone : Zone X - Tool	Stories / CPR: 4-7 / No
Parking: Assigned, Covered - 2, Garage, Guest	Frontage: Stream/Canal	
Zoning : 12 - A-2 Medium Density Apartme	View: Mountain	

Public Remarks: Kailua's Windward Cove! Experience the fusion of modernity and elegance in this renovated gem! The pristine kitchen, updated in 2022, boasts an induction cooktop for an open concept layout paired w/ glossy tile floors in the living room. Abundant natural light floods through large windows, complementing the airy 9' ceilings, free from popcorn texture. Stay cozy year-round with 4 split AC units. Ascend to the personal "Rooftop Deck" for breathtaking views and ample entertainment space under open skies. Enjoy ultimate privacy on the top floor, with no neighbors above. The main bedroom easily fits a California King-sized bed and connects to the en suite featuring a walk-in shower & convenient laundry shoot directly to the washer & dryer. Secure Tandem covered parking stalls await within the gated structure, with nearby EV charging stations available. Indulge in amenities like Security, Resident Manager, BBQ, car wash, pool, and 2 newly resurfaced tennis courts. Perfectly situated steps from Target, Safeway, restaurants, breweries, the newest UFC gym, Whole Foods, parks, and just minutes from white sand beaches. 3d tour view available* **Sale Conditions:** None **Schools:** , , *
[Request Showing](#), [Photos](#), [History](#), [Maps](#), [Deed](#), [Watch List](#), [Tax Info](#)



Address	Price	Bd & Bth	Living / Avg.	Land Avg.	Lanai	Occ.	FL	DOM
1020 Aoloa Place 405A	\$975,000	3 & 2/0	1,240 \$786	142,833 \$7	0	67%	4	41

Address	Tax Maint. Ass.	Assessed Land	Assessed Building	Assessed Total	Ratio	Year & Remodeled
1020 Aoloa Place 405A	\$300 \$1,311 \$0	\$258,300	\$609,100	\$867,400	112%	1980 & NA

[1020 Aoloa Place 405A](#) - MLS#: [202407595](#) - Kailua's Windward Cove! Experience the fusion of modernity and elegance in this renovated gem! The pristine kitchen, updated in 2022, boasts an induction cooktop for an open concept layout paired w/ glossy tile floors in the living room. Abundant natural light floods through large windows, complementing the airy 9' ceilings, free from popcorn texture. Stay cozy year-round with 4 split AC units. Ascend to the personal "Rooftop Deck" for breathtaking views and ample entertainment space under open skies. Enjoy ultimate privacy on the top floor, with no neighbors above. The main bedroom easily fits a California King-sized bed and connects to the en suite featuring a walk-in shower & convenient laundry shoot directly to the washer & dryer. Secure Tandem covered parking stalls await within the gated structure, with nearby EV charging stations available. Indulge in amenities like Security, Resident Manager, BBQ, car wash, pool, and 2 newly resurfaced tennis courts. Perfectly situated steps from Target, Safeway, restaurants, breweries, the newest UFC gym, Whole Foods, parks, and just minutes from white sand beaches. 3d tour view available* **Region:** Kailua **Neighborhood:** Kailua Town **Condition:** Excellent **Parking:** Assigned, Covered - 2, Garage, Guest **Total Parking:** 2 **View:** Mountain **Frontage:** Stream/Canal **Pool:** **Zoning:** 12 - A-2 Medium Density Apartme **Sale Conditions:** None **Schools:** , , *
[Request Showing](#), [Photos](#), [History](#), [Maps](#), [Deed](#), [Watch List](#), [Tax Info](#)

DOM = Days on Market, Occ. = Occupancy, FL = Floor Number