

## **Banyan Tree Plaza 1212 Punahou Street Unit 3002, Honolulu 96826 \* Banyan Tree Plaza \***

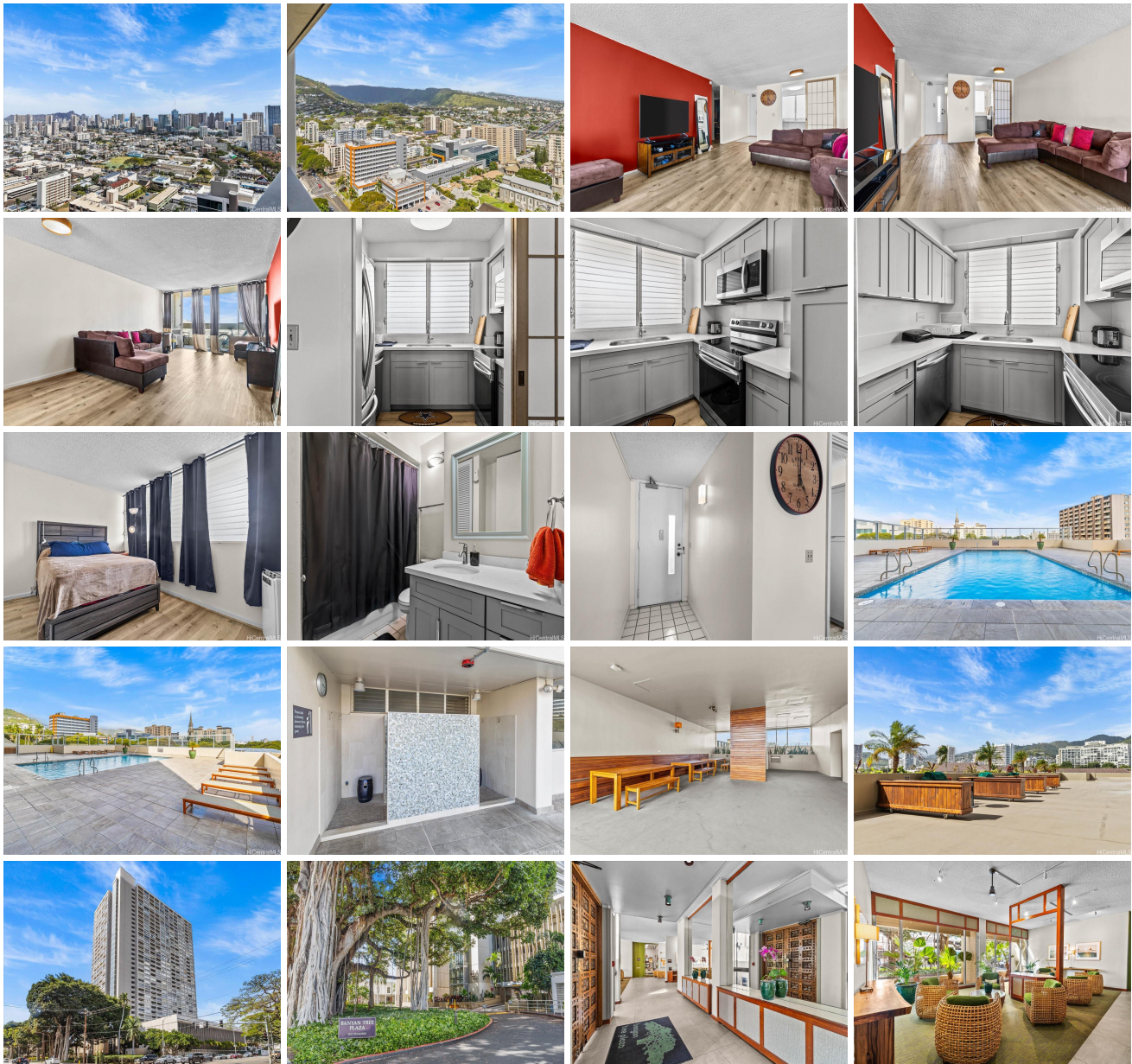
**\$455,000**

Beds: <b>1</b>	MLS#: <b><u>202407688</u>, FS</b>	Year Built: <b>1974</b>
Bath: <b>1/0</b>	Status: <b>Active</b>	Remodeled: <b>2021</b>
Living Sq. Ft.: <b>715</b>	List Date & DOM: <b>04-09-2024 &amp; 37</b>	Total Parking: <b>1</b>
Land Sq. Ft.: <b>0</b>	Condition: <b>Excellent</b>	<a href="#">Assessed Value</a>
Lanai Sq. Ft.: <b>78</b>	Frontage:	Building: <b>\$387,600</b>
Sq. Ft. Other: <b>0</b>	Tax/Year: <b>\$129/2023</b>	Land: <b>\$54,300</b>
Total Sq. Ft. <b>793</b>	Neighborhood: <b>Punahou</b>	Total: <b>\$441,900</b>
Maint./Assoc. <b>\$813 / \$0</b>	<a href="#">Flood Zone</a> : <b>Zone X - Tool</b>	Stories / CPR: <b>21+ / No</b>
Parking: <b>Assigned, Covered - 1, Guest, Secured Entry</b>	Frontage:	

[Zoning](#): **13 - A-3 High Density Apartment**

View: **City, Diamond Head**

**Public Remarks:** Experience the pinnacle of urban living in this luxurious 1-bedroom, 1-bathroom condominium nestled within the dynamic heart of Honolulu at Banyan Tree Plaza. This residence seamlessly blends elegance with comfort, featuring a spacious kitchen, a serene bedroom, and mesmerizing views. Step out onto your private balcony and immerse yourself in sweeping panoramas of the city skyline and the iconic Diamond Head, creating an enchanting backdrop for your everyday life. Take pleasure in the abundance of amenities available within the building, enriching your lifestyle with unparalleled convenience and leisure. Ideally located near premier shopping destinations, gourmet dining establishments, and cultural landmarks, this condominium offers an opportunity for those seeking a vibrant urban experience. Embrace the chance to transform Banyan Tree Plaza into your own personal haven. **Sale Conditions:** None **Schools:** , , \* [Request Showing, Photos, History, Maps, Deed, Watch List, Tax Info](#)





Address	Price	Bd & Bth	Living / Avg.	Land   Avg.	Lanai	Occ.	FL	DOM
<a href="#">1212 Punahou Street 3002</a>	<a href="#">\$455,000</a>	1 & 1/0	715   \$636	0   \$inf	78	55%	29	37

Address	Tax   Maint.   Ass.	Assessed Land	Assessed Building	Assessed Total	Ratio	Year & Remodeled
<a href="#">1212 Punahou Street 3002</a>	\$129   \$813   \$0	\$54,300	\$387,600	\$441,900	103%	1974 & 2021

[1212 Punahou Street 3002](#) - MLS#: [202407688](#) - Experience the pinnacle of urban living in this luxurious 1-bedroom, 1-bathroom condominium nestled within the dynamic heart of Honolulu at Banyan Tree Plaza. This residence seamlessly blends elegance with comfort, featuring a spacious kitchen, a serene bedroom, and mesmerizing views. Step out onto your private balcony and immerse yourself in sweeping panoramas of the city skyline and the iconic Diamond Head, creating an enchanting backdrop for your everyday life. Take pleasure in the abundance of amenities available within the building, enriching your lifestyle with unparalleled convenience and leisure. Ideally located near premier shopping destinations, gourmet dining establishments, and cultural landmarks, this condominium offers an opportunity for those seeking a vibrant urban experience. Embrace the chance to transform Banyan Tree Plaza into your own personal haven. **Region:** Metro **Neighborhood:** Punahou **Condition:** Excellent **Parking:** Assigned, Covered - 1, Guest, Secured Entry **Total Parking:** 1 **View:** City, Diamond Head **Frontage:** **Pool:** **Zoning:** 13 - A-3 High Density Apartment **Sale Conditions:** None **Schools:** , ,  
\* [Request Showing](#), [Photos](#), [History](#), [Maps](#), [Deed](#), [Watch List](#), [Tax Info](#)

DOM = Days on Market, Occ. = Occupancy, FL = Floor Number