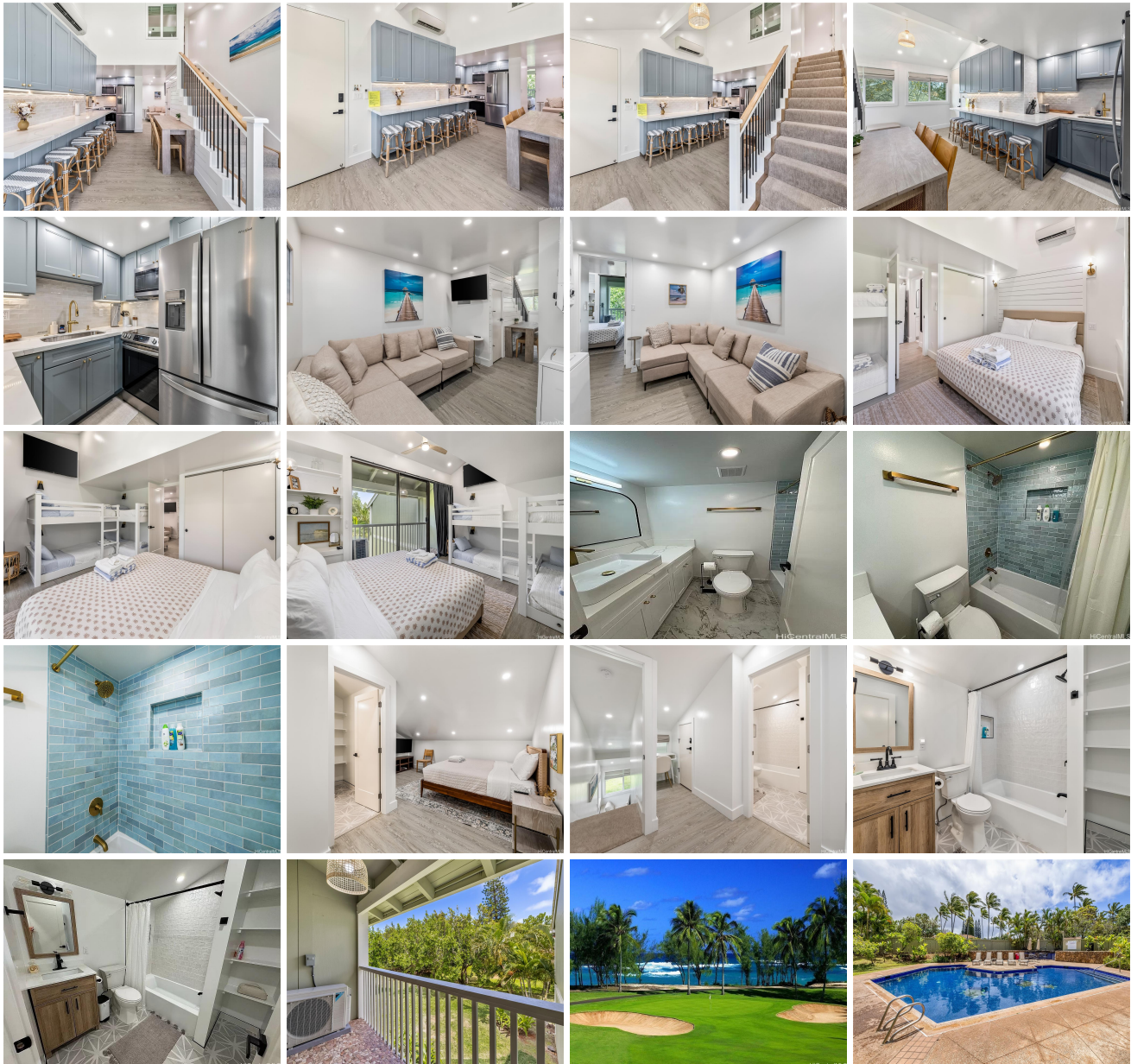


**Kuilima Ests East 57-091 Lalo Kuilima Place Unit 60, Kahuku 96731 \* Kuilima Ests East \***

**\$1,750,000**

Beds: <b>2</b>	MLS#: <b><u>202407797</u>, FS</b>	Year Built: <b>1975</b>
Bath: <b>2/0</b>	Status: <b>Active</b>	Remodeled: <b>2024</b>
Living Sq. Ft.: <b>897</b>	List Date & DOM: <b>04-12-2024 &amp; 33</b>	Total Parking: <b>1</b>
Land Sq. Ft.: <b>0</b>	Condition: <b>Excellent</b>	<a href="#">Assessed Value</a>
Lanai Sq. Ft.: <b>60</b>	Frontage: <b>Other</b>	Building: <b>\$618,800</b>
Sq. Ft. Other: <b>0</b>	Tax/Year: <b>\$220/2023</b>	Land: <b>\$193,400</b>
Total Sq. Ft. <b>957</b>	Neighborhood: <b>Kuilima</b>	Total: <b>\$812,200</b>
Maint./Assoc. <b>\$0 / \$642</b>	<a href="#">Flood Zone</a> : <b>Zone AE - Tool</b>	Stories / CPR: <b>Two / No</b>
Parking: <b>Assigned, Guest, Open - 1</b>	Frontage: <b>Other</b>	
<a href="#">Zoning</a> : <b>11 - A-1 Low Density Apartment</b>	View: <b>Garden</b>	

**Public Remarks:** Welcome to your fully renovated and one-of-a-kind treasures at the Turtle Bay Resort on Oahu's North Shore! This newly completed interior has been renovated and reconstructed into a 2 bedroom, 2 bathroom luxury unit that's ready to go, INCLUDING ALL FURNISHINGS. There is no other unit in the entire complex with this custom layout which allows for many guests to enjoy. New plumbing, electrical, stainless-steel appliances, new furniture, and custom finishes throughout this gem (List of Improvements in Supplements). Kuilima Estates East is one of the only communities on the North Shore that allows for short-term nightly vacation rentals. Well-manicured, spacious grounds with amenities including several pools, tennis/pickleball courts, bbq, & just a short walk to white sandy beaches! If you want to explore resort amenities, you are close to the newly remodeled Turtle Bay Resort, the world class Arnold Palmer championship golf course, cuisine by award winning chef Roy Yamaguchi, horse stables, scenic paths & more! North Shore surf spots, fishing, and all water sports are close by. Square footage is approximate, and bedrooms do not match tax records. Buyer to do their own due diligence. **Sale Conditions:** None **Schools:** [Kahuku](#), [Kahuku](#), [Kahuku](#) \* [Request Showing](#), [Photos](#), [History](#), [Maps](#), [Deed](#), [Watch List](#), [Tax Info](#)





Address	Price	Bd & Bth	Living / Avg.	Land   Avg.	Lanai	Occ.	FL	DOM
<a href="#">57-091 Lalo Kuilima Place 60</a>	<a href="#">\$1,750,000</a>	2 & 2/0	897   \$1,951	0   \$inf	60	21%	2	33

Address	Tax   Maint.   Ass.	Assessed Land	Assessed Building	Assessed Total	Ratio	Year & Remodeled
<a href="#">57-091 Lalo Kuilima Place 60</a>	\$220   \$0   \$642	\$193,400	\$618,800	\$812,200	215%	1975 & 2024

[57-091 Lalo Kuilima Place 60](#) - MLS#: [202407797](#) - Welcome to your fully renovated and one-of-a-kind treasures at the Turtle Bay Resort on Oahu's North Shore! This newly completed interior has been renovated and reconstructed into a 2 bedroom, 2 bathroom luxury unit that's ready to go, INCLUDING ALL FURNISHINGS. There is no other unit in the entire complex with this custom layout which allows for many guests to enjoy. New plumbing, electrical, stainless-steel appliances, new furniture, and custom finishes throughout this gem (List of Improvements in Supplements). Kuilima Estates East is one of the only communities on the North Shore that allows for short-term nightly vacation rentals. Well-manicured, spacious grounds with amenities including several pools, tennis/pickleball courts, bbq, & just a short walk to white sandy beaches! If you want to explore resort amenities, you are close to the newly remodeled Turtle Bay Resort, the world class Arnold Palmer championship golf course, cuisine by award winning chef Roy Yamaguchi, horse stables, scenic paths & more! North Shore surf spots, fishing, and all water sports are close by. Square footage is approximate, and bedrooms do not match tax records. Buyer to do their own due diligence. **Region:** North Shore **Neighborhood:** Kuilima **Condition:** Excellent **Parking:** Assigned, Guest, Open - 1 **Total Parking:** 1 **View:** Garden **Frontage:** Other **Pool:** **Zoning:** 11 - A-1 Low Density Apartment **Sale Conditions:** None **Schools:** [Kahuku](#), [Kahuku](#), [Kahuku](#) \* [Request Showing](#), [Photos](#), [History](#), [Maps](#), [Deed](#), [Watch List](#), [Tax Info](#)

DOM = Days on Market, Occ. = Occupancy, FL = Floor Number