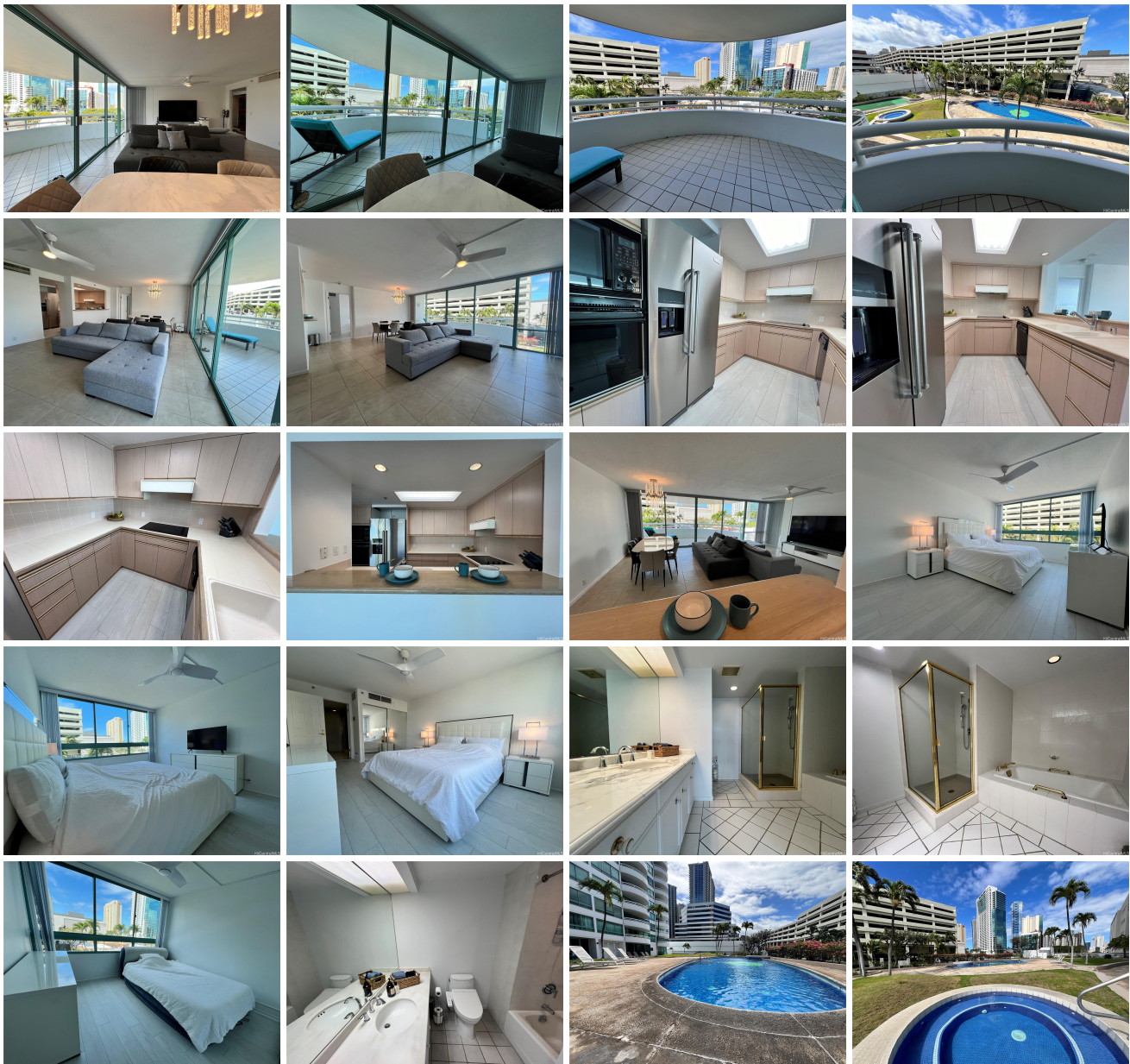


Uraku Tower Hawaii 1341 Kapiolani Boulevard Unit 6B, Honolulu 96814 * Uraku Tower

Hawaii * \$520,000 * Originally \$555,000

Beds: 2	MLS#: 202407818, FS	Year Built: 1989
Bath: 2/0	Status: Active	Remodeled:
Living Sq. Ft.: 1,136	List Date & DOM: 04-20-2024 & 27	Total Parking: 2
Land Sq. Ft.: 50,007	Condition: Above Average, Average	Assessed Value
Lanai Sq. Ft.: 139	Frontage:	Building: \$347,100
Sq. Ft. Other: 0	Tax/Year: \$178/2024	Land: \$262,400
Total Sq. Ft. 1,275	Neighborhood: Ala Moana	Total: \$609,500
Maint./Assoc. \$2,232 / \$0	Flood Zone : Zone X - Tool	Stories / CPR: 21+ / No
Parking: Assigned, Covered - 2, Garage, Guest, Secured Entry, Tandem	Frontage:	
Zoning : 33 - BMX-3 Community Business M	View: City, Garden	

Public Remarks: Discover Luxury Living at Uraku Tower! This well-maintained 2-bed, 2-bath, 2 tandem parking unit offers approximately 1,136 sq.ft. of spacious living, complete with a lanai for enjoying stunning views. Vinyl plank flooring and more. Enjoy finer amenities including concierge service, weekly housekeeping service, pool, hot tub, gym, library, limousine service and more. Conveniently located across from Ala Moana Center and blocks from Ala Moana Beach Park, endless dining, shopping, and entertainment options await. Don't miss this opportunity for unrivaled upscale living in Honolulu! **Sale Conditions:** None **Schools:** , , * [Request Showing](#), [Photos](#), [History](#), [Maps](#), [Deed](#), [Watch List](#), [Tax Info](#)





Address	Price	Bd & Bth	Living / Avg.	Land Avg.	Lanai	Occ.	FL	DOM
1341 Kapiolani Boulevard 6B	\$520,000	2 & 2/0	1,136 \$458	50,007 \$10	139	38%	6	27

Address	Tax Maint. Ass.	Assessed Land	Assessed Building	Assessed Total	Ratio	Year & Remodeled
1341 Kapiolani Boulevard 6B	\$178 \$2,232 \$0	\$262,400	\$347,100	\$609,500	85%	1989 & NA

[1341 Kapiolani Boulevard 6B](#) - MLS#: [202407818](#) - Original price was \$555,000 - Discover Luxury Living at Uraku Tower! This well-maintained 2-bed, 2-bath, 2 tandem parking unit offers approximately 1,136 sq.ft. of spacious living, complete with a lanai for enjoying stunning views. Vinyl plank flooring and more. Enjoy finer amenities including concierge service, weekly housekeeping service, pool, hot tub, gym, library, limousine service and more. Conveniently located across from Ala Moana Center and blocks from Ala Moana Beach Park, endless dining, shopping, and entertainment options await. Don't miss this opportunity for unrivaled upscale living in Honolulu! **Region:** Metro **Neighborhood:** Ala Moana **Condition:** Above Average, Average **Parking:** Assigned, Covered - 2, Garage, Guest, Secured Entry, Tandem **Total Parking:** 2 **View:** City, Garden **Frontage:** Pool: **Zoning:** 33 - BMX-3 Community Business M **Sale Conditions:** None **Schools:** , , * [Request Showing](#), [Photos](#), [History](#), [Maps](#), [Deed](#), [Watch List](#), [Tax Info](#)

DOM = Days on Market, Occ. = Occupancy, FL = Floor Number