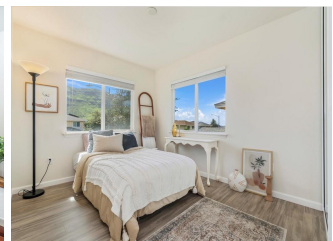
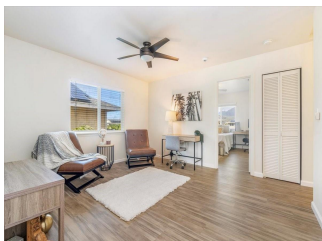
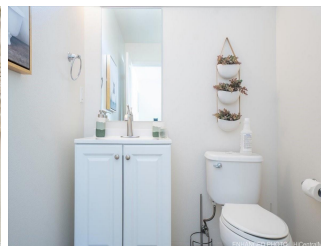
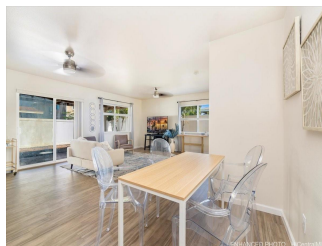


87-326 Mokila Place, Waianae 96792 ** \$825,000 * Originally \$829,000

Beds: 4	MLS#: 202407826, FS	Year Built: 2013
Bath: 2/1	Status: Active	Remodeled:
Living Sq. Ft.: 1,744	List Date & DOM: 04-10-2024 & 41	Total Parking: 2
Land Sq. Ft.: 3,770	Condition: Excellent	Assessed Value
Lanai Sq. Ft.: 0	Frontage: Other	Building: \$409,300
Sq. Ft. Other: 0	Tax/Year: \$248/2023	Land: \$441,100
Total Sq. Ft. 1,744	Neighborhood: Mali Sea-makalae 1	Total: \$850,400
Maint./Assoc. \$0 / \$70	Flood Zone : Zone X - Tool	Stories / CPR: Two / No
Parking: 2 Car	Frontage: Other	
Zoning : 05 - R-5 Residential District	View: Mountain, Sunset	

Public Remarks: 5/20 Back on market at no fault due to the seller , improved price of \$825,000 . Seller is offering a \$15,000 credit . The Coveted Plan 6 "Ono" Model in Makalae at Sea Country Phase 1 is a highly sought-after home. Developed by D.R. Horton Homes, this beautiful 4-bedroom house offers a spacious floor plan. On the lower floor, you'll find a large open living room and dining room area. The kitchen features a sit-down peninsula with plenty of counter top space and cabinets for storage. There is also a convenient half bath with a vanity on this floor. The dining area has a sliding glass door that leads to a covered patio area. Moving to the second floor, you'll find a generous-sized loft, a primary bedroom with an attached bathroom, and three additional bedrooms along with a guest full bathroom. Some notable upgrades in this home include an 18-owned Photovoltaic system with 2 Tesla Wall Mount Batteries, a central A.C. system, and laminate wood flooring throughout. The property also offers a large driveway for parking additional vehicles and a 2-car garage with epoxy floors. It is located in a quiet cul-de-sac, providing added privacy and beautiful views of the Waianae Mountain Range. **Sale Conditions:** None **Schools:** , , * [Request Showing](#), [Photos](#), [History](#), [Maps](#), [Deed](#), [Watch List](#), [Tax Info](#)





Address	Price	Bd & Bth	Living / Avg.	Land Avg.	Lanai	Occ.	FL	DOM
87-326 Mokila Place	\$825,000	4 & 2/1	1,744 \$473	3,770 \$219	0	0%	0	41

Address	Tax Maint. Ass.	Assessed Land	Assessed Building	Assessed Total	Ratio	Year & Remodeled
87-326 Mokila Place	\$248 \$0 \$70	\$441,100	\$409,300	\$850,400	97%	2013 & NA

[87-326 Mokila Place](#) - MLS#: [202407826](#) - Original price was \$829,000 - 5/20 Back on market at no fault due to the seller , improved price of \$825,000 . Seller is offering a \$15,000 credit . The Coveted Plan 6 "Ono" Model in Makalae at Sea Country Phase 1 is a highly sought-after home. Developed by D.R. Horton Homes, this beautiful 4-bedroom house offers a spacious floor plan. On the lower floor, you'll find a large open living room and dining room area. The kitchen features a sit-down peninsula with plenty of counter top space and cabinets for storage. There is also a convenient half bath with a vanity on this floor. The dining area has a sliding glass door that leads to a covered patio area. Moving to the second floor, you'll find a generous-sized loft, a primary bedroom with an attached bathroom, and three additional bedrooms along with a guest full bathroom. Some notable upgrades in this home include an 18-owned Photovoltaic system with 2 Tesla Wall Mount Batteries, a central A.C. system, and laminate wood flooring throughout. The property also offers a large driveway for parking additional vehicles and a 2-car garage with epoxy floors. It is located in a quiet cul-de-sac, providing added privacy and beautiful views of the Waianae Mountain Range. **Region:** Leeward **Neighborhood:** Maili Sea-makalae 1 **Condition:** Excellent **Parking:** 2 Car **Total Parking:** 2 **View:** Mountain, Sunset **Frontage:** Other **Pool:** None **Zoning:** 05 - R-5 Residential District **Sale Conditions:** None **Schools:** , , * [Request Showing](#), [Photos](#), [History](#), [Maps](#), [Deed](#), [Watch List](#), [Tax Info](#)

DOM = Days on Market, Occ. = Occupancy, FL = Floor Number