

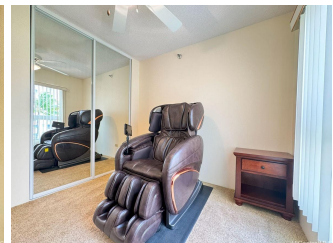
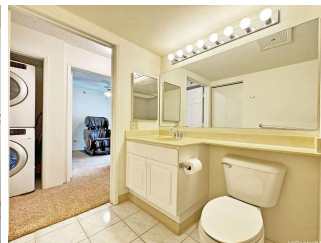
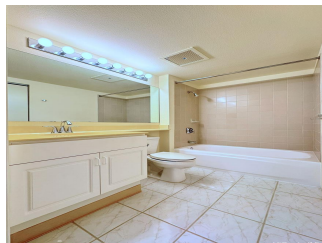
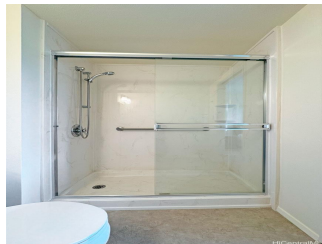
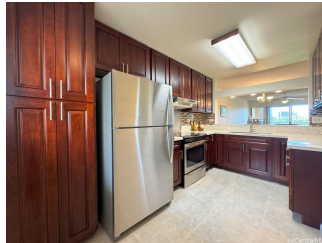
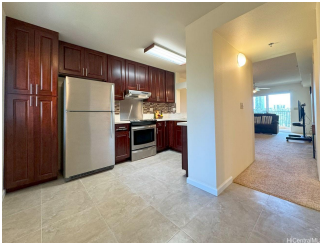
Country Club Village 3075 Ala Poha Place Unit 501, Honolulu 96818 * Country Club Village

*** \$729,888**

Beds: 3	MLS#: <u>202407827</u>, FS	Year Built: 1996
Bath: 2/0	Status: Active	Remodeled:
Living Sq. Ft.: 1,044	List Date & DOM: 04-05-2024 & 42	Total Parking: 2
Land Sq. Ft.: 84,245	Condition: Excellent	Assessed Value
Lanai Sq. Ft.: 73	Frontage: Golf Course	Building: \$699,100
Sq. Ft. Other: 0	Tax/Year: \$168/2024	Land: \$38,800
Total Sq. Ft. 1,117	Neighborhood: Salt Lake	Total: \$737,900
Maint./Assoc. \$880 / \$0	Flood Zone : Zone X - Tool	Stories / CPR: 15-20 / No
Parking: Assigned, Covered - 2, Garage, Guest, Tandem	Frontage: Golf Course	
Zoning : 12 - A-2 Medium Density Apartme	View: Golf Course	

Public Remarks: MUST SEE to APPRECIATE! TURN KEY CORNER unit with Newer, remodeled kitchen and appliances. Unit repainted, bathtub reglazed and other minor repairs made to make this unit SPECIAL! A FULL size stacked washer and dryer adds to the convenience and comfort. Primary bedroom and lanai overlooks the lush green GOLF COURSE. Excellent cross ventilation flows through the unit. Complex features RESORT type AMENITIES; which include a walking/jogging path, swimming pool, recreation room, meeting room, dedicated pet areas, bicycle storage, security, resident manager and AMPLE guest parking. Conveniently located to neighborhood eateries, markets, Target and schools. Easy access to freeway, airport and to Military bases - Hickam, Fort Shafter and Tripler. Monthly dues are \$879.64 which includes: \$604.58 for HOA; \$31.27 (Country Club Village Association fee) and \$225.43 (reserve assessment to maintain reserves). Email your request to show!

Sale Conditions: None **Schools:** , , * [Request Showing](#), [Photos](#), [History](#), [Maps](#), [Deed](#), [Watch List](#), [Tax Info](#)





Address	Price	Bd & Bth	Living / Avg.	Land Avg.	Lanai	Occ.	FL	DOM
3075 Ala Poha Place 501	\$729,888	3 & 2/0	1,044 \$699	84,245 \$9	73	75%	5	42

Address	Tax Maint. Ass.	Assessed Land	Assessed Building	Assessed Total	Ratio	Year & Remodeled
3075 Ala Poha Place 501	\$168 \$880 \$0	\$38,800	\$699,100	\$737,900	99%	1996 & NA

[3075 Ala Poha Place 501](#) - MLS#: [202407827](#) - MUST SEE to APPRECIATE! TURN KEY CORNER unit with Newer, remodeled kitchen and appliances. Unit repainted, bathtub reglazed and other minor repairs made to make this unit SPECIAL! A FULL size stacked washer and dryer adds to the convenience and comfort. Primary bedroom and lanai overlooks the lush green GOLF COURSE. Excellent cross ventilation flows through the unit. Complex features RESORT type AMENITIES; which include a walking/jogging path, swimming pool, recreation room, meeting room, dedicated pet areas, bicycle storage, security, resident manager and AMPLE guest parking. Conveniently located to neighborhood eateries, markets, Target and schools. Easy access to freeway, airport and to Military bases - Hickam, Fort Shafter and Tripler. Monthly dues are \$879.64 which includes: \$604.58 for HOA; \$31.27 (Country Club Village Association fee) and \$225.43 (reserve assessment to maintain reserves). Email your request to show! **Region:** Metro **Neighborhood:** Salt Lake **Condition:** Excellent **Parking:** Assigned, Covered - 2, Garage, Guest, Tandem **Total Parking:** 2 **View:** Golf Course **Frontage:** Golf Course **Pool:** **Zoning:** 12 - A-2 Medium Density Apartme **Sale Conditions:** None **Schools:** , , * [Request Showing](#), [Photos](#), [History](#), [Maps](#), [Deed](#), [Watch List](#), [Tax Info](#)

DOM = Days on Market, Occ. = Occupancy, FL = Floor Number