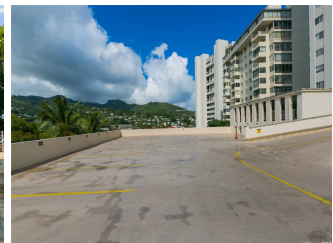
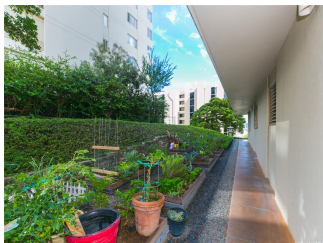
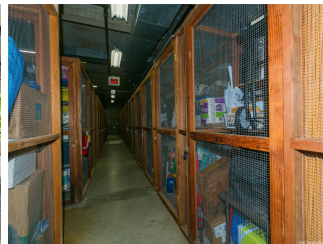
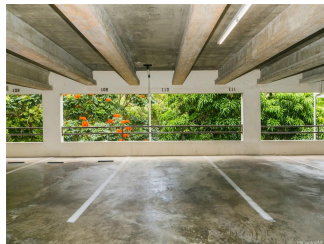
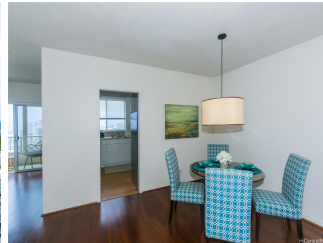


999 Wilder 999 Wilder Avenue Unit 1602, Honolulu 96822 * 999 Wilder * \$925,000Beds: **2**MLS#: **202407841, FS**Year Built: **1966**Bath: **2/0**Status: **Active Under Contract**

Remodeled:

Living Sq. Ft.: **1,382**List Date & DOM: **04-07-2024 & 12**Total Parking: **2**Land Sq. Ft.: **64,382**Condition: **Above Average**[Assessed Value](#)Lanai Sq. Ft.: **265**Frontage: **Other**Building: **\$665,100**Sq. Ft. Other: **0**Tax/Year: **\$244/2023**Land: **\$169,000**Total Sq. Ft. **1,647**Neighborhood: **Punchbowl Area**Total: **\$834,100**Maint./Assoc. **\$1,686 / \$0**[Flood Zone](#): **Zone X - Tool**Stories / CPR: **15-20 / No**Parking: **Assigned, Covered - 2, Guest**Frontage: **Other**[Zoning](#): **12 - A-2 Medium Density Apartme**View: **Coastline, Diamond Head, Ocean, Other**

Public Remarks: Rarely available corner apartment in the 999 Wilder with its coveted wrap-around lanai. This spacious 2 bedroom, 2 bath offers views from the morning sunrise including vistas of Diamond Head, the south shore coastline to the downtown area to the sunsets in the west. Enjoy spacious living in over 1300 sq. ft. of interior space or enjoy the fresh breezes on the lanai of 265 sq. ft. with recently installed, November, 2023, Rollshutter system. This unit also includes a second parking stall. Enjoy the grounds with its saltwater pool, BBQ area and community garden along. There is also a lounge with a full kitchen. Ample guest parking with security. **Sale Conditions:** None **Schools:** [Lincoln](#), [Stevenson](#), [Roosevelt](#) * [Request Showing](#), [Photos](#), [History](#), [Maps](#), [Deed](#), [Watch List](#), [Tax Info](#)



Address	Price	Bd & Bth	Living / Avg.	Land Avg.	Lanai	Occ.	FL	DOM
999 Wilder Avenue 1602	\$925,000	2 & 2/0	1,382 \$669	64,382 \$14	265	87%	16	12

Address	Tax Maint. Ass.	Assessed Land	Assessed Building	Assessed Total	Ratio	Year & Remodeled
999 Wilder Avenue 1602	\$244 \$1,686 \$0	\$169,000	\$665,100	\$834,100	111%	1966 & NA

[999 Wilder Avenue 1602](#) - MLS#: [202407841](#) - Rarely available corner apartment in the 999 Wilder with its coveted wrap-around lanai. This spacious 2 bedroom, 2 bath offers views from the morning sunrise including vistas of Diamond Head, the south shore coastline to the downtown area to the sunsets in the west. Enjoy spacious living in over 1300 sq. ft. of interior space or enjoy the fresh breezes on the lanai of 265 sq. ft. with recently installed, November, 2023, Rollshutter system. This unit also includes a second parking stall. Enjoy the grounds with its saltwater pool, BBQ area and community garden along. There is also a lounge with a full kitchen. Ample guest parking with security. **Region:** Metro **Neighborhood:** Punchbowl Area **Condition:** Above Average **Parking:** Assigned, Covered - 2, Guest **Total Parking:** 2 **View:** Coastline, Diamond Head, Ocean, Other **Frontage:** Other **Pool:** **Zoning:** 12 - A-2 Medium Density Apartme **Sale Conditions:** None **Schools:** [Lincoln, Stevenson, Roosevelt](#) * [Request Showing](#), [Photos](#), [History](#), [Maps](#), [Deed](#), [Watch List](#), [Tax Info](#)

DOM = Days on Market, Occ. = Occupancy, FL = Floor Number