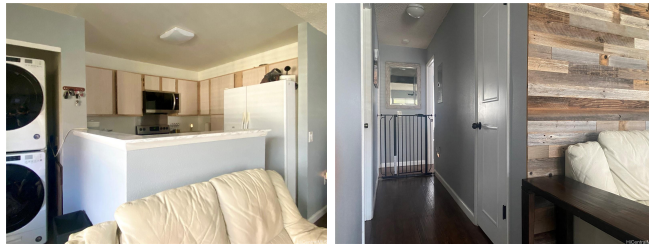


Havens of ii Vistas II PH1 95-1041 Koolani Drive Unit 56, Mililani 96789 * Havens of ii

Vistas II PH1 * \$580,000

Beds: 2	MLS#: 202407846, FS	Year Built: 1998
Bath: 2/0	Status: Pending	Remodeled:
Living Sq. Ft.: 802	List Date & DOM: 04-09-2024 & 7	Total Parking: 2
Land Sq. Ft.: 123,841	Condition: Excellent	Assessed Value
Lanai Sq. Ft.: 200	Frontage:	Building: \$322,100
Sq. Ft. Other: 0	Tax/Year: \$58/2023	Land: \$259,400
Total Sq. Ft. 1,002	Neighborhood: Mililani Mauka	Total: \$581,500
Maint./Assoc. \$434 / \$48	Flood Zone : Zone D - Tool	Stories / CPR: One / No
Parking: Covered - 1, Guest, Open - 1	Frontage:	
Zoning : 11 - A-1 Low Density Apartment	View: None	

Public Remarks: This delightful ground floor, corner unit enjoys a grass Courtyard perfect for pets/Bar-B-Q and a touch of outdoor living in the Havens of I'i Vistas, a Gated Community offering access to community recreational centers and award-winning schools. Location: easy access to Military Installations - Schofield Barracks, Wheeler Army-Air Force Base, Pearl Harbor, Hickam Air Force Base - to shopping, to major highways to Honolulu, the "Second City" Kapolei, and to the North Shore for recreational activities. Two assigned parking stalls, one covered, one open, both conveniently located close to the unit. A coveted neighborhood, situated on the uplands of Oahu in a planned community. See it, make YOUR own. **Sale Conditions:** None **Schools:** [Mililani Mauka](#), [Mililani](#), [Mililani](#) * [Request Showing](#), [Photos](#), [History](#), [Maps](#), [Deed](#), [Watch List](#), [Tax Info](#)



Address	Price	Bd & Bth	Living / Avg.	Land Avg.	Lanai	Occ.	FL	DOM
95-1041 Koolani Drive 56	\$580,000	2 & 2/0	802 \$723	123,841 \$5	200	48%	1	7

Address	Tax Maint. Ass.	Assessed Land	Assessed Building	Assessed Total	Ratio	Year & Remodeled
95-1041 Koolani Drive 56	\$58 \$434 \$48	\$259,400	\$322,100	\$581,500	100%	1998 & NA

[95-1041 Koolani Drive 56](#) - MLS#: [202407846](#) - This delightful ground floor, corner unit enjoys a grass Courtyard perfect for pets/Bar-B-Q and a touch of outdoor living in the Havens of I'i Vistas, a Gated Community offering access to community recreational centers and award-winning schools. Location: easy access to Military Installations - Schofield Barracks, Wheeler Army-Air Force Base, Pearl Harbor, Hickam Air Force Base - to shopping, to major highways to Honolulu, the "Second City" Kapolei, and to the North Shore for recreational activities. Two assigned parking stalls, one covered, one open, both conveniently located close to the unit. A coveted neighborhood, situated on the uplands of Oahu in a planned community. See it, make YOUR own. **Region:** Central **Neighborhood:** Mililani Mauka **Condition:** Excellent **Parking:** Covered - 1, Guest, Open - 1 **Total Parking:** 2 **View:** None **Frontage:** **Pool:** **Zoning:** 11 - A-1 Low Density Apartment **Sale Conditions:** None **Schools:** [Mililani Mauka](#), [Mililani](#), [Mililani](#) * [Request Showing](#), [Photos](#), [History](#), [Maps](#), [Deed](#), [Watch List](#), [Tax Info](#)

DOM = Days on Market, Occ. = Occupancy, FL = Floor Number