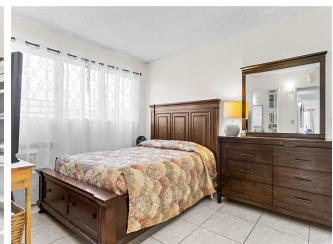
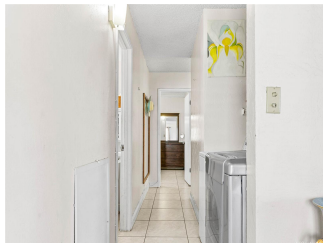
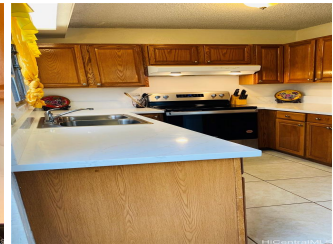
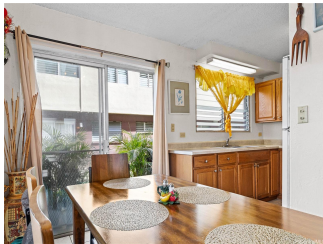
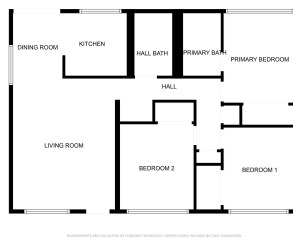


## **Tropicana Manor-Moanalua 3223 Ala Ilima Street Unit 3223/1, Honolulu 96818 \* Tropicana**

**Manor-Moanalua \* \$550,000**

Beds: <b>3</b>	MLS#: <b><u>202407857</u>, FS</b>	Year Built: <b>1969</b>
Bath: <b>2/0</b>	Status: <b>Active</b>	Remodeled: <b>2024</b>
Living Sq. Ft.: <b>966</b>	List Date & DOM: <b>04-08-2024 &amp; 43</b>	Total Parking: <b>1</b>
Land Sq. Ft.: <b>172,759</b>	Condition: <b>Above Average</b>	<a href="#">Assessed Value</a>
Lanai Sq. Ft.: <b>0</b>	Frontage:	Building: <b>\$420,000</b>
Sq. Ft. Other: <b>0</b>	Tax/Year: <b>\$107/2024</b>	Land: <b>\$98,100</b>
Total Sq. Ft. <b>966</b>	Neighborhood: <b>Salt Lake</b>	Total: <b>\$518,500</b>
Maint./Assoc. <b>\$630 / \$0</b>	<a href="#">Flood Zone</a> : <b>Zone X - <u>Tool</u></b>	Stories / CPR: <b>One / No</b>
Parking: <b>Assigned, Open - 1</b>	Frontage:	
<a href="#">Zoning</a> : <b>12 - A-2 Medium Density Apartme</b>	View: <b>None</b>	

**Public Remarks:** Welcome to this ground level townhome in Salt Lake. This charming home offers 3 beds, 2 baths, and a spacious living dining room area. Enjoy the convenience of ground floor living with parking right in front. Kitchen has new quartz countertops, all flooring throughout are porcelain tiles, and the main bathroom has a reglazed surround tile and bathtub. Features include a washer/dryer in unit, air conditioning in the rooms, lots of storage closets, and close to the entrance of the complex. Located across from Salt Lake Shopping Center, near schools, airport, hospitals, and military bases. Don't miss this opportunity to experience the best of Honolulu living. The complex has excellent security and a pool in the complex. Schedule a showing today! **Sale Conditions:** None **Schools:** , , \* [Request Showing](#), [Photos](#), [History](#), [Maps](#), [Deed](#), [Watch List](#), [Tax Info](#)





Address	Price	Bd & Bth	Living / Avg.	Land   Avg.	Lanai	Occ.	FL	DOM
<a href="#">3223 Ala Ilima Street 3223/1</a>	<a href="#">\$550,000</a>	3 & 2/0	966   \$569	172,759   \$3	0	65%	1	43

Address	Tax   Maint.   Ass.	Assessed Land	Assessed Building	Assessed Total	Ratio	Year & Remodeled
<a href="#">3223 Ala Ilima Street 3223/1</a>	\$107   \$630   \$0	\$98,100	\$420,000	\$518,500	106%	1969 & 2024

<a href="#">3223 Ala Ilima Street 3223/1</a> - MLS#: <a href="#">202407857</a> - Welcome to this ground level townhome in Salt Lake. This charming home offers 3 beds, 2 baths, and a spacious living dining room area. Enjoy the convenience of ground floor living with parking right in front. Kitchen has new quartz countertops, all flooring throughout are porcelain tiles, and the main bathroom has a reglazed surround tile and bathtub. Features include a washer/dryer in unit, air conditioning in the rooms, lots of storage closets, and close to the entrance of the complex. Located across from Salt Lake Shopping Center, near schools, airport, hospitals, and military bases. Don't miss this opportunity to experience the best of Honolulu living. The complex has excellent security and a pool in the complex. Schedule a showing today! <b>Region:</b> Metro <b>Neighborhood:</b> Salt Lake <b>Condition:</b> Above Average <b>Parking:</b> Assigned, Open - 1 <b>Total Parking:</b> 1 <b>View:</b> None <b>Frontage:</b> <b>Pool:</b> <b>Zoning:</b> 12 - A-2 Medium Density Apartme <b>Sale Conditions:</b> None <b>Schools:</b> , , * <a href="#">Request Showing</a> , <a href="#">Photos</a> , <a href="#">History</a> , <a href="#">Maps</a> , <a href="#">Deed</a> , <a href="#">Watch List</a> , <a href="#">Tax Info</a>						
---	--	--	--	--	--	--

DOM = Days on Market, Occ. = Occupancy, FL = Floor Number