

**Pearl 2 98-410 Koauka Loop Unit 22D, Aiea 96701 \* Pearl 2 \* \$415,000**

Beds: **1**

MLS#: **202407879, FS**

Year Built: **1975**

Bath: **1/0**

Status: **Active Under Contract**

Remodeled: **2016**

Living Sq. Ft.: **767**

List Date & DOM: **04-08-2024 & 7**

Total Parking: **1**

Land Sq. Ft.: **155,814**

Condition: **Above Average**

[Assessed Value](#)

Lanai Sq. Ft.: **0**

Frontage:

Building: **\$392,000**

Sq. Ft. Other: **0**

Tax/Year: **\$115/2023**

Land: **\$47,500**

Total Sq. Ft. **767**

Neighborhood: **Pearlridge**

Total: **\$439,500**

Maint./Assoc. **\$452 / \$0**

[Flood Zone](#): **Zone X - Tool**

Stories / CPR: **One / No**

Parking: **Assigned, Covered - 1**

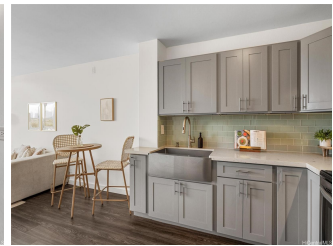
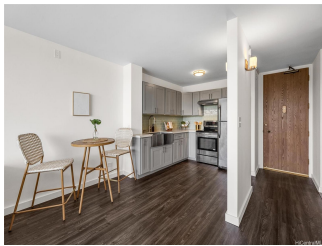
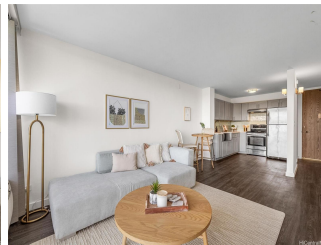
Frontage:

[Zoning](#): **12 - A-2 Medium Density Apartme**

View: **Golf Course**

**Public Remarks:** Nestled within the Pearl Two community, unit #22d has been renovated to offer a modern one-bedroom, one-bath oasis, complete with an additional storage space for residents' convenience. With sleek finishes and premium materials, it exudes contemporary elegance. Residents can enjoy stunning golf course views from the balcony and access excellent amenities including a sauna, pool, pickleball court, dog park, and toddler playground. Assigned covered parking and ample guest parking ensure convenience for all. Pearl Two #22d epitomizes modern living with its blend of comfort, views, amenities, and added storage, offering residents a luxurious retreat in a vibrant community. **Sale Conditions:** None

**Schools:** , , \* [Request Showing](#), [Photos](#), [History](#), [Maps](#), [Deed](#), [Watch List](#), [Tax Info](#)





Address	Price	Bd & Bth	Living / Avg.	Land   Avg.	Lanai	Occ.	FL	DOM
<a href="#">98-410 Koauka Loop 22D</a>	<a href="#">\$415,000</a>	1 & 1/0	767   \$541	155,814   \$3	0	54%	21	7

Address	Tax   Maint.   Ass.	Assessed Land	Assessed Building	Assessed Total	Ratio	Year & Remodeled
<a href="#">98-410 Koauka Loop 22D</a>	\$115   \$452   \$0	\$47,500	\$392,000	\$439,500	94%	1975 & 2016

[98-410 Koauka Loop 22D](#) - MLS#: [202407879](#) - Nestled within the Pearl Two community, unit #22d has been renovated to offer a modern one-bedroom, one-bath oasis, complete with an additional storage space for residents' convenience. With sleek finishes and premium materials, it exudes contemporary elegance. Residents can enjoy stunning golf course views from the balcony and access excellent amenities including a sauna, pool, pickleball court, dog park, and toddler playground. Assigned covered parking and ample guest parking ensure convenience for all. Pearl Two #22d epitomizes modern living with its blend of comfort, views, amenities, and added storage, offering residents a luxurious retreat in a vibrant community.  
**Region:** Pearl City **Neighborhood:** Pearlridge **Condition:** Above Average **Parking:** Assigned, Covered - 1 **Total Parking:** 1 **View:** Golf Course **Frontage:** Pool: **Zoning:** 12 - A-2 Medium Density Apartme **Sale Conditions:** None **Schools:** , , \*  
[Request Showing](#), [Photos](#), [History](#), [Maps](#), [Deed](#), [Watch List](#), [Tax Info](#)

DOM = Days on Market, Occ. = Occupancy, FL = Floor Number